



GOVERNMENT OF SAMOA



ANNUAL REPORT 2014 - 2015



MINISTRY OF NATURAL RESOURCES AND ENVIRONMENT



MINISTRY OF NATURAL RESOURCES AND ENVIRONMENT

Annual Report

2014 / 2015

Please address all correspondence to:
The Minister of Natural Resources
and Environment



Postal Address Private Bag Apia
Telephone: (685)25257
Facsimile: (685)29195

GOVERNMENT OF SAMOA

OFFICE OF THE MINISTER OF NATURAL RESOURCES AND ENVIRONMENT

Ministry of Natural Resources and Environment; Samoa Trust Estates Corporation; Scientific Research Organisation of Samoa;
Customary Land Advisory Commission; National Parks Recreation and Water Conservation; National Disaster Management;
Meteorology and Forestry; Planning and Urban Management Agency.

July 2015

Honourable Speaker of the House
Legislative Assembly
Mulino

In accordance with Section 143 of the Lands and Environment Act 1989, I am pleased to submit herein the Annual Report of the Ministry of Natural Resources and Environment for the year ended June 30 2015.

The Report is the record of the Ministry's performance in accordance with its mandate and output structure, and to be laid before the Legislative Assembly of Samoa.

May the Assembly be enlightened

With respect

A handwritten signature in black ink, appearing to read 'Faale Tumaalii'.

Fa'amoetaulua Lealaiauloto Taito Dr. Faale Tumaalii
Minister

Table of Content	Page
List of Acronyms	5
Minister, CEO	6
Land Board, PUMA Board, Water Resources Board	7
Geographic Board, Forestry Board	8
Highlights of the Year Under Review	9
Staff Development	17
 Performance Achievements	
Output 1: Policy Advice to the Minister	18
Output 2: Ministerial Support	18
Sub - Output 1: Renewable Energy	19
Sub - Output 1: GEF	22
Output 3: Land Management	24
Output 4: Spatial Information Agency	33
Output 5: Environment and Conservation	36
Output 6: Forest Management	41
Output 7: Meteorology	47
Output 8: Planning and Urban Management Services	49
Output 9: Water Resources	50
Output 10: Disaster Management	55
Output 11: Water Sector Unit	56
CSU 1 Legal Services	57
CSU 2 Corporate Services	57
IT Unit	63
 Annex 1 Finance Statement	60
Ministry Structure	64
Annex 2 Asset Register	65
Projects Implemented	73

Acronyms

AIREP	-	Aleipata Island Restoration Program
AVA	-	Australian Volunteer Association
CFC	-	Computer Folio Certificate
COT	-	Crown of Thorns Starfish
CLAC	-	Customary Land Advisory Committee
CGPS	-	Continuous Global Position System Base Station
CRAM	-	Coral Reefs Assessment and Monitoring
DAC	-	Disaster Advisory Committee
DCDB	-	Digital Cadastral Database
EIA	-	Environment Internal Assessment
EU	-	European Union
EWACC	-	Economy Wide Adaptation to Climate Change
FESA	-	Fire Emergency Services Authority
GCI	-	Global Communications Institute
GNSS	-	Global Navigate Satellite System
IAMP2	-	Institutional Asset Management Project 2;
ICCRIFS	-	Integration of Climate Change Risk into Forestry of Samoa
IFAW	-	International Fund for Animal Welfare
IRIS	-	Integrated Research Institute in Seismology
IWC	-	International Water Centre
JICA	-	Japan International Cooperation Agency
KIGAM	-	Korean Institute of Geology and Mines;
METAR	-	Meteorology Aerodrome Report
MNRE	-	Ministry of Natural Resources and Environment
MOH	-	Ministry of Health
MoU	-	Memorandum of Understanding
NAPA	-	National Adaptation Plan of Action
NAP	-	National Action Plan
NCCT	-	National Climate Change Country Team
NCSA	-	National Capacity Self-Assessment
NDC	-	National data Centre
NDMP	-	National Disaster Management Plan
NIWA	-	National Institute of Water & Atmospheric Research
NESP	-	National Environment Sector Plan
NEX	-	National Execution of Projects
NUS	-	National University of Samoa
PEF	-	Pacific Environment Forum
RED	-	Renewable Energy Division
ROFOR	-	Route Forecast
SIAM	-	Second Infrastructure Asset Management Program
SLISE	-	Samoa Lithospheric Integrated Seismic Experiment
SLM	-	Sustainable Land Management
SMSMCL	-	Strengthening Multi - Sectoral Management of Critical Landscape in Samoa
SNITT	-	Samoa National Invasive Task Team
SOE	-	State of the Environment
SOPAC	-	Secretariat of the Pacific Applied Geo-science Commission
SPREP	-	Secretariat of the Pacific Environment Programme
SROS	-	Scientific Research of Samoa
UNCCD	-	United Nations Combating Climate Desertification
UNFCCC	-	United Nation Convention on Climate Change
WHOI	-	Woodhole Oceanographic Institute
WMO	-	World Meteorological Organization
WWW	-	World Weather Watch program
PEEP	-	Promoting Energy Efficiency in the Pacific
OMS	-	Quality Management System

MINISTER



Hon. Faamoetauloa Lealaiauloto Taito Dr. Faale Tumaalii

CHIEF EXECUTIVE OFFICER



Suluimalo Amataga Penaia

LAND BOARD

• Minister of Natural Resources & Environment	Chairman
• Chief Executive Officer	Deputy Chairman
Ministry of Natural Resources & Environment	
• Attorney General	Member
• Chief Executive Officer, Ministry of Finance	Member
• Chief Executive Officer, Ministry of Agriculture & Fisheries	Member
• Chief Executive Officer, Ministry of Works Transport & Infrastructure	Member
• Fepuleai Tuitea	Member
• Leleimalefaga Mau	Member
• Sufia Sekone	Member
• Oloialii Sea Ailua	Member
• Poloa Sio	Member

PUMA BOARD

• Minister of Natural Resources & Environment	Chairman
• Chief Executive Officer, MNRE	Deputy Chairman
• Chief Executive Officer, Ministry of Finance	Member
• Police Commissioner, Ministry of Police	Member
• CEO, Ministry of Women, Community & Social development	Member
• CEO, Ministry of Works, Transport & Infrastructure	Member
• Lauaki Rita Keil	Member
• Leiatua Isikuki Punivalu	Member
• Luamanuvae Ene	Member
• Sauvao Amiatu Sio	Member

WATER RESOURCES BOARD

• Minister of Natural Resources & Environment	Chairman
• ACEO- Water Resources Division, MNRE	Secretary to the Board
• Chief Executive Officer, MNRE	Member
• Chief Executive Officer, Ministry of Agriculture & Fisheries	Member
• Chief Executive Officer, Ministry of Finance	Member
• CEO, Ministry of Women, Community & Social development	Member
• Managing Director Samoa Water Authority	Member
• General Manager, Electric Power Corporation	Member
• 4 Community Representatives	Member
• 1 NGO Representative	Member

GEOGRAPHIC NAMES BOARD

• Minister of Natural Resources & Environment	Chairman
• Chief Executive Officer, MNRE	Deputy Chairman
• Galuvao Viliamu	Registered Surveyor
• CEO, Ministry of Education, Sports & Culture	Member
• CEO, Land & Transport Authority	Member
• CEO, Ministry of Women, Community & Social Development	Member
• CEO, Samoa Tourism Authority	Member
• Commissioner, Ministry of Police & Prison	Member
• Commissioner, Fire Emergency & Authority	Member
• Su'a Mulitalo Suapi	Member
• Atoa Tafunai	Member
• Patu Ativalu	Member

FORESTRY BOARD

•	Minister of Natural Resources & Environment	Chairman
•	CEO, Ministry of Natural Resources & Environment	Deputy Chairman
•	CEO, Ministry of Finance	Member
•	CEO, Ministry of Agriculture and Fisheries	Member
•	CEO, Ministry of Commerce, Industry & Labour	Member
•	CEO, Ministry of Women, Community & Social Development	Member
•	Leota Ioane	Member
•	Faamoetauloa Lagisoifua Etene	Member
•	Tiatia Fisiga	Member
•	Mataia Jesse Lee	Member
•	Lemana Aukusitino Ono	Member
•	Tupai Fiamatai	Member
•	Amituanai Lemoe	Member

HIGHLIGHTS OF THE YEAR UNDER REVIEW

Community Consultations on invasive species and its impact to the environment.

Conducted by the Division of Environment at Letava and Vailima



The objectives of the consultation were:

- To inform the community about invasive species and its impact to the environment
- To inform the community on the available methodologies to deal with myna birds, albizias, rubber trees, and the African tulip tree.
- To strengthen working collaboratively with the local communities in controlling and eradication of invasive species from Samoa
- To promote the work that we do and contribution to the community.

The consultation covered points on Mt Vaea Restoration and Ecological mainly focused on invasive plants/trees.



Clean up campaign - Keep our Rivers Clean and Healthy

This is an ongoing event under the River Ecosystem Health Monitoring Program, which monitors the quality of our rivers.

The Ministry and its partners continue to promote safe/clean water resources and healthy aquatic environments through river cleanup campaigns, radio talkback shows, television advertisements, newspaper articles.

The clean-up resulted in the removal of large quantities of plastics, heavy metals, household items, baby pampers, tiles and other rubbish that was an eye sore in the main drainage systems around town such as the Fugalei Bridge.

An overall assessment was that there has been a reduction of rubbish being disposed directly into rivers, but more and more are going into drains around town. Families have been who are responsible for the rubbish issued with warning letters and weekly inspections are planned.

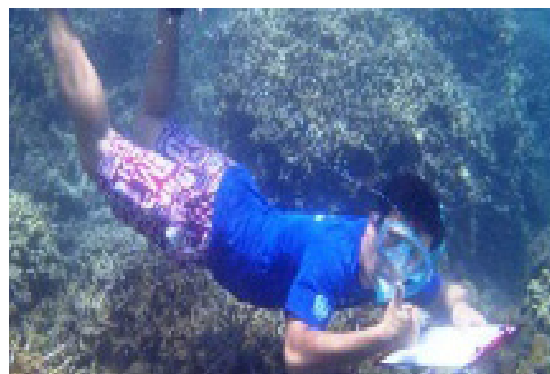


School Awareness - Marine Conservation

Six colleges requested the Ministry for presentations and fieldtrips related to the marine environment to help them towards their internal assessments. These schools were Avele College, Leulumoea-Fou College, Maluafo College, Papauta Girls College, Samoa College and St Mary's College.



The two main marine environments discussed were the mangroves and coral reef ecosystems. A total number of 187 students and teachers participated during the fieldtrips and presentations.



Turtles released from Malua Theological College

Thirteen turtles were tagged and released from the Malua Theological College turtle pond. The college contracted the Ministry beforehand to help with the tag and release of the turtles back into the wild.



The College has been collaborating with the Ministry since 2004 and this activity is an on-going conservation effort. Since then, two turtles tagged from Malua have been encountered again in other countries. One was adult green turtle (male) tagged in 2004 which was later caught in Kiribati in 2009.

Of 17 turtles tagged from Malua 13 were released back into the wild and 4 were put back inside the pond. Since 2004, the Ministry through the Environment Conservation Division has flipper tagged 195 turtles which were entered into the SPREP TREDs Database.



Ecological Survey for Taga and Gataivai Forest areas



Gataivai open forest area (230m to 500m asl)



View from Mt Fatuafie Forest Area Taga (552m asl)

The above forest areas in Savaii (Taga and Gataivai) provide a wide range of critical habitats for our native plant and bird species for conservation. It is a priority of these villages to protect and restore their forest ecosystems through maintaining a rich biodiversity and a healthy environment.

River Clean Up

There was also an emphasis on monitoring waste disposal into rivers and streams with a number of Precautionary Notices issued to families and businesses who were practicing this.

There was 100% compliance to these notices, but the practice continued afterwards. WRD will now step-up with the enforcement to control the ongoing non-compliance by those practicing river rubbish disposal. To assist with this, two new village bylaws are being developed.

Collaboration with other stakeholders was good throughout the year, with the Water Resources Technical Committee and the Water Resources Board meetings proceeding normally, with various issues being addressed.

Water Lettuce - Invasive Species

A map of where the water lettuce was found is being established to identify any trend or spread of the plant in hopes to manage and hopefully eradicate the plant completely from Samoa.

Water lettuce (*Pistia stratiotes*) is an invasive species in Samoa. This floating aquatic plant is native to South America and was first reported in Samoa in 2012 for ornamental purposes. The plant forms thick mats that block sunlight and slow or prevent the growth of native aquatic plants. As the plant dies and decomposes, it removes oxygen from water, which can disrupt fish communities. The MNRE through the Environment and Conservation Division are working collaboratively with the communities and SPREP to control and eradicate this invasive species.



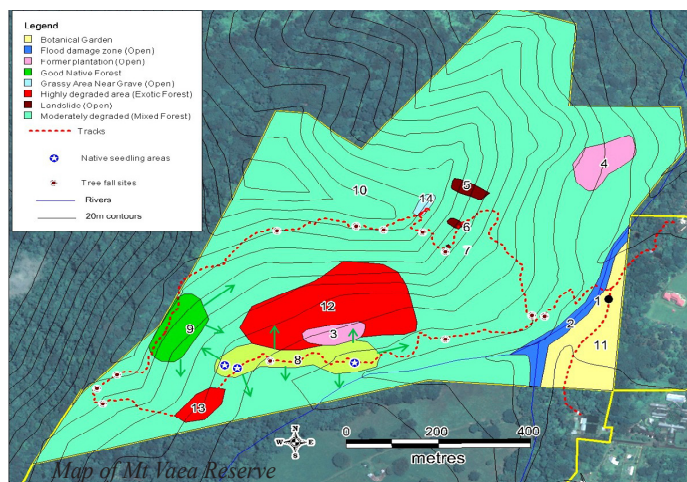
Crown of Thorns Starfish (Alamea) on the watch



Community member collecting COTs

The crown of thorns starfish, *Acanthaster planci* has had great impacts on Samoan reefs. In the last 50 years, three major outbreaks were recorded (scientific) in 1969-71, 1977-1980s with the most recent in 2010. Collection operations were carried out for all outbreaks to control the starfish. The most recent outbreak collection campaign in 2010-2011 was an effort to help with the recovery of the coral reefs from the impacts of the 2009 tsunami which concentrated on the south-south-eastern coast of Upolu. Continued monitoring survey was carried out in 2013. Since September 2014, a nationwide study began to determine the distribution and density of the species and their link to terrestrial run off.

Mount Vaea forest restoration project.



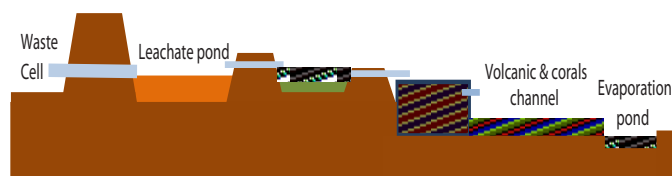
The 80 hectare area was formerly covered with lowland rainforest but is now heavily infested with invasive weeds. At present around 60% of all tree stems in the reserve are introduced invasive tree species. Coordinated forest restoration activities have been taking place in the Mt Vaea nature reserve since 2007.

Waste Segregation in urban areas pilot project



A pilot project for waste minimization and segregation was launched in February 2015. The project aims to introduce practices on basic waste segregation by using the 3Rs- Reduce Reuse and Recycle. Through segregation, waste reaching the landfills may be minimized and keeps the landfill from filling up too quickly. Recyclable waste can also be extracted and taken to recycle facilities. The urban areas generally produce more waste than rural areas and were therefore targeted for the project. Awareness was the top priority. Presentations were carried out as communities needed to understand the different types of waste, why they needed to be separated and how they can be managed. Cages and bins were distributed to selected schools, supermarkets and hotels within the town area for the separation of the waste accordingly to recyclable materials, organic waste and general waste. The Division collects data from the segregated waste to plan appropriate actions and measures introduced, around Samoa. Other partners involved in the project are; Jaffa's Sanitary System, Pacific Recycle and J-PRISM/JICA.

Leachate Treatment Facility for Vaiaata Landfill



The Vai'a'ata Landfill was opened in 2005. It is an anaerobic landfill unlike the Tafa'igata Landfill which is semi-aerobic. Rubbish is compacted and then left in the open. Improvements to the facility were proposed. In March 2015, the landfill began installing some new upgrades to improve the landfill. A simple leachate treatment facility was in the works. Later in April, the installation works were completed. A new leachate pond was constructed and a filtration system. Coral fragments, sand and coconut husks were used for the treatment filters. An operational office was also constructed to assist the caretaker on monitoring of incoming vehicles for both the solid waste disposal landfill and the sludge treatment facility. Monthly visits to the facility will be conducted to ensure it is working well.

Construction of Tarsealed road at Tafaigata landfill and Public Toilets in Eleele-fou and Mulinuu



The road at Tafaigata landfill and public toilets works were officially opened just before the SIDs meeting in September 2014. All facilities were jointly funded by the European Union (EU) and the Government of Samoa.

Meteorology Milestones

The 4th and final meeting of the Joint Coordination Committee (JCC) of the Samoa –Japan Project: Upgrade of Weather Forecasting and Early Warning Facilities held in September; 2014

Entourage from China Earthquake National Center (CENC) arrive in May for negotiations of the 2nd phase of the Samoa- China Seismic Network (SCSN) project, outcome: capacity building in Nov-December for six staff members of the Geo-science section;

11th Two (2) Samoa Post-Tropical Cyclone Season & 6th Tsunami Coordination Meeting 28-29 April 2015 American Samoa-NOAA National Weather Services, Tafuna and the 12th Pre –TC meeting and Tsunami Coordination held in Apia October 2015

First Ministerial Meeting for the Pacific Meteorological Council (PMC) held in Tonga, July organized by SPREP with funding from COSPPac (Australia), FINPAC (Finland), NOAA (United States) and various other sources.

COSPPac project Steering Committee meeting and transition Plan for transfer of functions to regional organizations;

Retreat and consultations for the Review of the Ozone Regulations held out at various times during the year, sector consultations delayed the process, mainly Samoa Refrigeration Engineering Association (SREA)

Continue drilling for the Water Resources Division (WRD) for water quality monitoring bores in both islands, with a few private drilling requests mainly for Opus, Tinai & Gordon for the Pacific Climate Change Centre at SPREP;

Water Resources; National Hydrometric Network

Regular maintenance of water resources monitoring equipments and stations of the National Hydrometric Network to ensure that information is accurately gauged and stored until it is updated into the National Water Resources Information System (NWRIMS). This network of monitoring stations is annually expanded to ensure that all parts of the country are adequately monitored and currently consists of 16 rain gauges, 13 water level and flow gauges and a total of 20 monitoring boreholes had been drilled and installed around the country. Three recording stations had been upgraded to the telemetry system two of which are water levels in Savaii: Faleata and Seugagogo streams and 1 rain gauge: Lake Lanotoo in Upolu. Thus far, 3 water level stations and 2 rain gauges have now been upgraded to the telemetry system.

Improve the enabling environment for water resources management.

The implementation and enforcement of the Water Resources Management Act 2008 was and is still a priority, especially the licensing of water developers and trying to get information from them on how much water is being abstracted from the environment.

Strengthen community engagement in water resources management

The Water Resources Division carried out community consultations in the watershed areas identified in the following including technical assistance extended the communities of Letogo-Vailele, Faleaseela, Malie, Fasitoo-uta, Solosolo and others, to support their proposals for rehabilitation of water sources and watershed management projects. Community involvement in rehabilitation efforts improved, with the hope to strengthen these kinds of partnerships in the coming year.

World Wetlands Day

World Wetlands Day 2015 6th February 2015, was commemorated under the international theme of “Wetlands for our Future”. The official program held at Savai’i and the Honourable Minister of MNRE highlighted the role of youth in promoting wetlands and empowering their ability to make a difference. Samoa’s wetlands have been threatened over the years with erosion and pollution from excessive forests clearance, unsustainable developments and illegal waste dumping.



Minister at the official launching of the community P3DM with enthusiastic support from local community.



Lelepa's Women Committee performing at the Celebration of the World Wetland Day 2015 in Savaii.

Spatial Information Milestones

Compliance and control of data sharing and usage.

A proposal for Aerial mapping for Samoa delay from 2013/2014FY by the LiDAR (expecting this data at the end of October 2015).

Geographic Names Board approved 49 road names mapping were done, field visit for all these roads and searches carried out for each road plus selected names for recommendations to the Board.

Assist UniTec (NZ) for cultural mapping Fagaloa Bay heritage site and Conservation area. Mapping for the Small Island Development meeting in September 2014.

Maps produced:

- Topography map A0 & A1 – 56
- Orthophoto map A0 & A1 – 19
- Thematic map A2 – 8
- Miscellaneous map A3 & A4 – 55
- Tourist Map - 28

Increase number of student from various colleges regarding the need of mapping for their research, etc. Land use map to integrate climate change risk and resilience for Samoa

Land use map to integrate climate change risk and resilient for Samoa

Official geographic data for territorial sea baseline, territorial sea and the contiguous zone outer limits of Samoa exclusive economic zone (EEZ)

Biodiversity Day 2015-Malololelei Reserve

The commemoration of the Biodiversity Day was celebrated with the official launch of the Malololelei Nature Reserve .

Tuiaopo Andrew Ah Liki donated the 50 acre of private land to be established as a Nature Reserve, demonstrating commitment and partnership towards environment conservation.



Honourable Minister Faamoetaulua Dr. Faale T. with Faamausili Andrew Ah Liki during the launching of the Malololelei Reserve.



Some of the young Children involved in the Tree planting program during the commemoration of the Biodiversity Day at the Malololelei Reserve



Invited guests and the community participated at the launching of the Malololelei Reserve during the Biodiversity Day celebration 2015.



Vaasilifiti Moelagi cutting the ribbon of the Map - Malololelei Reserve during the Biodiversity Day Celebration at the reserve.



Some members of the Community who were participated in Poem Competition at Vailima Botanical Garden, the event was part of the Biodiversity Day Celebration 2015.

ENVIRONMENT WEEK 2014 “HEALTHY ISLAND BIODIVERSITY, FOR A CLIMATE RESILIENT SAMOA”



Pictures of different events during the celebration of the National Environment Week 2014

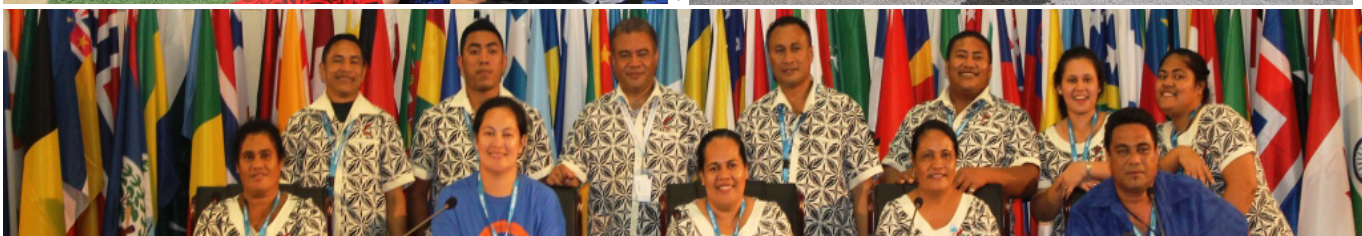


National Environment Award Presentations at the NUS Fale to mark the official closing ceremony of the National Environment Week 2014



3rd International Conference on SMALL ISLAND DEVELOPING STATES (SIDS) Apia. Samoa 1 - 4 September 2014





STAFF DEVELOPMENT

Staff Development Overseas & Training

The ministry continues to promote staff development program at all levels during the year through in country training, in house training, overseas travel and capacity building through projects support and on the job technical training.

Note a slight increase in number of training opportunities offered both overseas and locally for staff for the period 2014/15

During the year under review, the total number of overseas opportunities secured under various assistance for MNRE staff came to 133. This is represented by 55 meetings/conferences, and 78 training programs. Total number of staff involved was 99 from different levels of the ministry. A breakdown of these by division is summarized in the following table.

The ministry is very fortunate to receive many invitations and opportunities supported both by regional and international organisations, donor partners and the Samoan Government for public servants to attend international training/meeting/workshop as part of capacity building and upgrading relevant skills for the staff.

The challenge of course is the application of this knowledge gained and sharing information from these opportunities with staff.

Table 1

Division	Overseas travel	No. of staff	Conference/Meetings	Trainings
CEO	5	1	4	1
Corporate Services	3	3	2	1
Environment & Conservation	23	18	5	18
IT			0	0
Forestry	12	12	6	6
Legal	8	3	4	4
Land Management	4	4	3	1
Meteorology	21	20	6	15
PUMA	7	7	2	5
Renewable Energy	5	3	1	4
Technical Services	7	6	3	4
GEF	4	1	4	0
Water Sector Unit	5	5	1	4
DMO	14	6	8	6
Environment Coordination Unit	2	1	2	0
Water Resources	13	9	4	9
TOTAL	133	99	55	78

Table 2

Divisions	Conference/Meetings	Trainings
CEO	4	1
Corporate Services	2	1
Environment & Conservation	5	18
IT	0	0
Forestry	6	6
Legal	4	4
Land Management	3	1
Meteorology	6	15
PUMA	2	5
Renewable Energy	1	4
Technical Services	3	4
GEF	4	0
Water Sector Unit	1	4
DMO	8	6
Environment & Conservation	2	0
Water Resources	4	9
TOTAL	55	78

The table above indicates Divisions with high number of technical training attached for example: Environment Division, Meteorology, Water Resource Division and then followed by DMO and Forestry Division.

Overall Summary of Overseas travel FY 2014-2015



MNRE staff at the Celebration of the National Environment Week 2014 at Manono Tai

OUTPUT 1: POLICY ADVICE TO THE MINISTER.

Provide policy advice to the Minister on matters relating to the sustainable management of Samoa's natural resources and the environment.

Performance Measures	Targets
Number of workshops meetings for greenhouse gas abatement through Energy Efficiency and biofuels applications in the land transport and electricity sectors conducted	6
Number of renewable energy projects implemented	3
Number of policies and strategies for renewable energy and energy efficiency developed by the end of June 2015.	4
Percentage of development, registrations, and natural resource approvals issued over applications applied for	100%
Percentage completion of Annual report for 2014/2015	100%
Percentage of concepts and detailed project proposals prepared and submitted to GEF secretariat and other donors	100%
Install biogas system as onsite sanitation management and alternative fuel.	4
Percentage completion of Corporate Plan for 2014-2017	100%
Percentage of projects being implemented across the GEF focal areas	100%
Percentage of results and impacts of GEF Projects captured and reported	50%



Honourable Minister with some of the MNRE staff at the SIDS Conference 2014

OUTPUT 2 : MINISTERIAL SUPPORT SERVICES

Provide secretarial and administrative support to the Minister

Performance Measures**Targets**

Level of satisfaction of the minister with ministerial support provided by the ministry	90%
Number of local visits conducted by minister on resource management and environment	12



His Grace +Alapati Lui Mataeiliga and Honourable Minister Faamoetaulua Dr. Faale Tumalii at the Opening of the Mulivai Bridge and rockwall, during the celebration of the National Environment Week 2014.



L-R (CEO MNRE) Suluimalo A. Peneia, Minister(MNRE) with Deputy Prime Minister Nuafesili Fonotoe P. Lauofo and Papalii Sonja Hunter(CEO STA) at the opening ceremony of the National Toilet Day 2014.



Honourable Minister with UNDP Consultant

SUB - OUTPUT 1 - RENEWABLE ENERGY DIVISION (under Output 1 - Office of the CEO)

Provide the best services to promote climate change mitigation through energy efficiency and renewable energy for sustainable development of natural resources and environment.

The financial year 2014/2015 has seen a number of staffing changes within the Division. There was a change of leadership in November 2014, with a ACEO and Senior Officer by the end of the financial year as opposed to the single principal officer who manned the division during the interim period. The Principal Officer resigned for better opportunities elsewhere leaving the position vacant early June 2015.

The Renewable Energy Division (RED) has been able to complete some of its projects within this financial year.

(I) Technical Assistance to Address Climate Change – Phase 1 (TAACC1) Project funded by the National Development and Reform Commission (NDRC) of the People's Republic of China

(II) The MoU officially expire in November 2014. (II) Promoting Energy Efficiency in the Pacific - Phase Two (PEEP2) Project funded by AusAID, JICA and GEF through ADB completed in March 2015 with a workshop at Tanoa Tusitala Hotel hosted by the International Institute of Energy Conservation (IIEC) and MNRE-RED.

Funding secured from development partners for a number of planned projects. MNRE currently implementing or completed implementation of projects aided by funds including;

- AusAID, JICA and GEF funded PEEP2 project;
- International Union of the Conservation of Nature (IUCN) funded Greenhouse Gas Abatement project;
- SIDS-DOCK-PIGGAREP Plus programming funded Piu biogas project;
- NDRC funded TAACC1 and TAACC2 projects,
- European Commission through UNDP funding the INDC (Intended Nationally Determined Contribution) submission for Samoa to the UNFCCC.

Continue to work in close collaboration with UNDP and its Energy Sector partners; Samoa Trust Estate Corporation (STEC), Electric Power Corporation (EPC), Ministry of Finance (MoF) and the Scientific Research of Samoa (SROS)

Submitted a GEF-6 proposal the GEF council, where the majority of funds will be used for a biomass gasification plant to be installed within the STEC's compound at Mulifanua.

Quantitative Performance

Achievements July 2014 – June 2015

(i) AusAID-JICA-GEF – Promoting Energy Efficiency in the Pacific – Phase 2 (PEEP2)

- Funded by AusAID, GEF and JICA through the Asian Development Bank (ADB).
- Implemented by the International Institute of Energy Conservation (IIEC) and MNRE-RED.
- This project was officially closed with a PEEP2

workshop at Tanoa Tusitala Hotel by MNRE with participants from (Samoa, Cook Islands, Tonga, Vanuatu and PNG) and other SIDS

- 7 sub-projects of PEEP2 were carried out in Samoa in the duration of this project, as shown by *table 5 on page 24*
- 11 solar hybrid air conditioning units were received in February 2015, whereby 4 units were installed at SROS while the remaining 7 units were installed at MNRE – Meteorology by March 2015.
- Final sub-project of PEEP2 was Energy Efficient lighting for the Residential sector, whereby the public can pay through the EPC using their meter numbers for T5 lamp tubes at SAT \$3 per lamp, then have their lamp tubes supplied by MNRE – RED. This process is still ongoing by 30th June 2015, until all the lamp tubes are sold.

(ii) Greenhouse Gas Abatement Project:

Phase 1: Energy Efficiency and Biofuel Applications in the Land Transport sector.

- Funded by Austria and Italy through the International Union of Conservation of Nature (IUCN).
- Implemented by MNRE-RED, MoF, SROS and STEC.
- LTA was given the approval to a proposed Land Transport Authority regulation of limiting car emissions to 70%. Every year, a further 5% will be removed so that in 10 years' time, the emission ceiling will be 20%.
- SROS continue their research into jatropha oil as a substitute for coconut oil in biodiesel production for transport, to avoid the use of coconut oil which can pose food security issues.
- STEC continues to extract coconut oil using the three oil expellers launched in September 2013.
- Continued monitoring of the implementation of works.
- Facilitated meetings, for Project Steering Committee meetings.
- Coordinated all the awareness programmes under this project.

Phase 2: Strengthening Greenhouse Gas Abatement Strategy through an Appropriate Low Carbon Development Policy Framework.

- Funded by Austria and Italy through the International Union of Conservation of Nature (IUCN).
- Implemented by MNRE-RED, MoF and AGO.
- MNRE started the Tendering process in April 2015 for an Energy Consultant to assist with the formulation and finalization of the

(a) Renewable Energy and Energy Efficiency Policy Framework and

(b) Nationally Appropriate Mitigation Action (NAMA) plan.

- Energy Consultant to be awarded the contract in the next financial year once the bids have been reviewed by the evaluation committee (MNRE-RED, MoF AG.

<p>(iii) Biogas production through anaerobic digestion for electricity production.</p> <ul style="list-style-type: none"> Piu Biogas Electrification project is funded by Denmark through SIDS DOCK under the PIGGAREP Plus programme. Implemented by MNRE-RED with UNDP and SPREP. This important project is not only to demonstrate that waste can be used to generate energy by the production of biogas, but also to contribute to Samoa's 100% renewable electricity goal by the year 2017. In addition, more waste being converted to energy would mean that Samoa's greenhouse gas emissions are being reduced as more of these waste-to-energy projects are implemented within the community. The invasive climbing vine, merremia peltata, which has covered most of the village's land areas is one of the main feedstocks for the biogas plant. Moreover, the village can use any other organic waste including animal manure to feed the biogas digesters for biogas production. Development Consent (DC) from MNRE-PUMA (Planning and Urban Management Agency) and Building Permit from MWTI (Ministry of Works, Transport and Infrastructure) were granted. Construction works to begin in the next financial year. <p>(iv) Technical Assistance to Address Climate Change (TAACC).</p>	<p>(v) Intended Nationally Determined Contributions (INDC)</p> <ul style="list-style-type: none"> Funded by the European Commission through (UNDP). This project is the formulation and submission to the United Nations Framework Convention of Climate Change (UNFCCC), of Samoa's commitment to the global community of its greenhouse reductions to be achieved by 2025. INDC consultant to be appointed in the next financial year in order to submit Samoa's INDC before 1st October 2015 so it can be included in the list of INDC countries at the COP-21 in Paris in December 2015. <p>(vi) New Approved Projects.</p> <p>a) GEF-6 Renewable Energy focus proposal has been approved by the GEF Council. Total funds of USD \$6.82 million will be utilized on setting up a biomass gasification system at STEC, grid stability with EPC as well as other gaps within the energy sector which all need to be addressed before Samoa goes 100% renewable electricity by 2017. MNRE-RED will be the main implementing agency along with STEC and EPC.</p> <p>b) Funding for improved water and sanitation in Samoa comes from the European Union Water and Sanitation Sector Support Programme (EU-WSSSP). A total of \$20,000 from EU-WSSSP through MNRE-WSCU will be used to carry out a feedstock study on the most commonly available feedstock that can be used for biogas generation. This is timely because Samoa lacks a proper database of how much gas can be produced from the locally available feedstock on island.</p>
<p>Phase 1 (TAACC-1)</p> <ul style="list-style-type: none"> Funded and donated by the National Development and Reform Commission (NDRC) of the People's Republic of China. This first phase of the project provided 2100 sets of energy efficient air-conditioning units in 2013. MoU expired in November 2014, but some air-conditioning units still remain with the Ministry Advertisements Sunday Samoan newspaper Dec 2014 for the private and residential sectors to be part of this project. Handover ceremony for the private and residential sectors was held on 23rd Dec 2014. An Audit carried out by the Audit Office for the TAACC1 commenced in January 2015. Ongoing monitoring by MNRE-RED of all the recipients who are part of this project from the public, private and residential sectors until all air-conditioning units have been verified and accounted for. Audit report yet to be finalized and tabled in Parliament. <p>Phase 2 (TAACC-2)</p> <ul style="list-style-type: none"> Funded by the National Development and Reform Commission (NDRC) of the People's Republic of China. This second phase of the project provided 2500 sets of energy efficient LED street lights, arrived in Samoa early June 2015. MoU to be signed between MNRE and EPC once the street lights are officially handed over to EPC for installation. Other energy efficient electrical goods yet to arrive on island to address climate change include 18,000 LED lamp tubes and 500 solar street lights. 	<p>This feedstock study therefore should create a database of basic feedstock and the amount of gas they can produce. Creating energy from waste produces benefits twofold, not only will community people be able to access 'free' energy but their hygiene improves as they are encouraged to clear away their waste for biogas production. Communities can also generate income from this 'free' biogas once their systems are successfully installed. These communities also would be at an advantage, enjoying 'free' biogas as the price of commercial LPG cooking gas continues to rise.</p> <p>A further \$50,000 will be used to fund a Technical Assistant (TA) to provide the technical capacity to ensure that these biogas feasibility studies and projects come to fruition.</p> <div data-bbox="890 1706 1409 2054" data-label="Image"> </div> <p><i>Some of the MNRE Staff with the Australian High Commissioner at the USP Open Day 2014. (Promoting Bio Fuel Stoves)</i></p>

(vii) **Other Public Awareness**

- MNRE-RED in collaboration with MOF have planned more public awareness programmes for the energy sector.
- Plans are underway for an Energy Day to be celebrated on 14th December 2015.



Golf Carts using bio fuel at the SIDS Conference 2014

Table 3 Projects

	Sub-Project Name	Sub-Project Details
1	Energy Efficient Street Lighting project	Replaced 152 X 60W mercury street lights with 35W LED street lights for EPC.
2	Energy Efficient Lighting in Government Buildings	Replaced 6,881 X 45W fluorescent 4ft lamp tubes with 30W T5 efficient lamps for 10 entities [National Health Service (NHS), Central Bank of Samoa (CBS), Accident Compensation Corporation (ACC), Ministry of Education, Sports and Culture (MESC), Ministry of Natural Resources and Environment (MNRE), Scientific Research Organisation of Samoa (SROS), Polynesian Airlines Limited (PAL), Ministry of Police and Prisons (MPP), National Provident Fund (NPF), Mapuifagalele Home of the Aged]
3	Energy Efficient Luminaires in Government Buildings	Replaced complete inefficient T8 fluorescent fittings with efficient T5 fluorescent light fittings for two government entities [National University of Samoa (NUS) and Development Bank of Samoa (DBS)]
4	Demonstration of Energy Efficient Air-Conditioning Technologies in Samoa	Replaced inefficient Air Conditioners with efficient inverter type Air Conditioners, installing smart controllers to control ACs to save energy and replacing inefficient Air Conditioners with efficient Solar Hybrid Air Conditioners. 6 entities were involved – MNRE, MPP, NHS, NUS, SROS and Mapuifagalele.
5	Energy Efficient Lighting in the Commercial Sector	Replaced 1300 fluorescent lights with LED 1.2m lights for Yazaki, which is a commercial company which manufactures wire harness for motor vehicles.
6	Energy Efficient Air Conditioning in Hotels	Replaced inefficient Air Conditioners with efficient ACs for 2 hotels – Pacific Pearl and Vaisala hotels.
7	Residential Energy Efficient Lighting	Replacing 4000 inefficient T8 4-ft (45W) and 4000 T8 2-ft (28W) with efficient T5 fluorescent lights (30W and 16W) for about 3000 with a registered meter number. Each registered EPC customer pays EPC \$3/lamp and claim them from MNRE – RED.

SUB - OUTPUT 1. GLOBAL ENVIRONMENT FACILITY - GEF

(under Output 1 - Office of the CEO)

To provide a coordinated programme base to support sustainable management of Natural Resources and the Environment.

Quantitative Performance

This Division manages and facilitates Samoa's access to GEF and other external project funding through the effective planning and preparation of project proposals, including the most recent GEF6 Project Identification Document (PIF).

The Division is directly implementing the Economy-Wide Adaptation to Climate Change project (EWACC) and serves as the advisory arm for GEF projects that are being implemented by MNRE and other Ministries.

Projects such as the Integration of Climate Change Risk and Resilience into Forestry Management (ICCRIFS), NAPA 4, SMSMCL - GEF5, ICCRITS and GEF Rio Conventions. Also serves as the chair for the National Steering Committee for the GEF Small Grants Program (on behalf of the CEO) housed under the UNDP office. Other responsibilities include providing policy advice on:

- Climate Change implementation and integration into projects
- United Nations Framework Convention on Climate Change negotiations.

Outcome 1.1: Coordination of EWACC project

The GEF Division is implementing the EWACC project in coordination with MOF and MWCS, beginning a five year project to mainstream climate change adaptation and disaster risk management to all sectors through an economy-wide approach.

Achievements:

- Completed EIA for Vaisigano river wall
- Obtained procurement contract for design and construction of Vaisigano river wall and clearing of Vaisigano river mouth and sand deposition
- Conducted consultations with Vaisigano communities to identify needs and areas of support in coordination with MWCS
- Recruitment completed for multiple technical assistance and officer level positions to support climate change policy development, procurement and finance for the project team, development of national building code, engineering services for Vaisigano river wall, and for household surveys and analysis to support climate change adaptation and disaster risk management capacity for communities

Recruitment of necessary TAs will allow work to begin under Outcome 1 (policy and institutional strengthening of climate change adaptation and disaster risk management).

Outcome 1.2: Effective management of GEF programmes to facilitate the planning and preparation of project proposals and project synergies.

The GEF Division is responsible for coordinating projects funded by GEF and executed by multi stakeholders. A comprehensive

understanding of GEF operations is necessary to provide this coordinating function and plan and prepare new project proposals for MNRE. The GEF Division works in partnership with other divisions and Ministries to prepare Project Information Documents (PIFs) and Project Preparation Grants (PPG) so that projects can receive funding and begin in a timely manner.

Achievements

Project Identification Forms:

- Total number of PIFs written: 1
Project Preparation Grants - Project Document

(Refer to table 4 on page 23)

Outcome 1.3: Draft of GEF6 PIF, Improving the Performance and Reliability of RE Power Systems in Samoa (IMPRESS) Project Planning phase.

The IMPRESS project was approved by the GEF Council in October 2015. This five year project, which will be led by the STEC and Renewable Energy Division at MNRE, \$6,075,828 USD to improve sustainable and cost-effective utilization of RE resources.

Outcome 1.4: Conclusion of NAPA4 Project

The NAPA4 Project, Safeguards from Climate Change Risks concluded in 2014. The project, led by MNRE, STA and FESA, had three primary objectives: 1) monitor the impacts of climate change on planning, water, forest fires, tourism, and health; 2) develop adaptation measures for vulnerable communities, including early warning systems; and 3) improve capacity building, through the review of the Environment Sector Plan.

Achievements:

- Expansion of Climate Early Warning System (CLEWS) to include water, fire, and tourism sectors
- Finalized Apia Spatial Plan, Local Area Investment Plan, Urban Area Flood Study, National Urban Policy launched
- Increased groundwater monitoring, groundwater and climate change adaptation strategy drafted
- Launched national forest fire management strategy, construction of two firestations
- Development of a tourism adaptation strategy
- Training and awareness program conducted on PUMA EIA processes and regulation
- Publication of the State of Environment Report (SOE), and the National Environment and Development Sector Plan (2013-2016)

Outcome 1.5: Conclusion of ICCRIFS Project

The Integration of Climate Change Risks and Resilience into Forestry Management in Samoa (ICCRIFS) Project is in its last year of project implementation. This 5-year project was managed by the Forest Division, with advice and guidance provided by the GEF Division.

Achievements:

- Integration of climate change risks and resilience into forestry policy framework
- Demonstration of climate-resilient agroforestry and forestry techniques in lowland and upland areas including:
- Supporting district level committees
- Developing climate-sensitive management plans
- Increasing village and farmer participation
- Creating knowledge management products and sharing knowledge with farmers
- Present on experience at national, regional, and international events

Outcome 1.6: Small Grants Program - GEF/UNDP program We are involved as the National Steering Committee chairperson and we have worked closely with the SGP/UNDP program to streamline application process and procedures to match those programs under the SGP funding criterias.

Analysis - GEF Projects *Table 4*

Project	Duration	Total estimated programme USD	Expenditure until July 2014- June 15 USD Ex Rate:2.23	Estimated resources from Jan 2015 USD
ON GOING PROJECTS				
ICCRIFS	2011-2015	2,400,000	625,971.92	699,764
SMSMCL - Full Project	2013-2017	4,895,454	113,320.58	629,050
ICCRITS - Full Project	2013-2016	1,950,000	156,253.29	942,721
Adaptation Fund	2012-2016	8,048,250	752,346.33	3,018,342.61
Rio+ enabling Activity - PPG (PIF approved)	2013-2014	50,000	8347.25	
Economy-Wide Adaptation to Climate Change (EWACC)	2014-2019	13,250,000	96,965.98	2,868,820
Renewable Energy (IMPRESS) - PIF Approved	2015-2021	150,000		150,000
SUBTOTAL - ON GOING SAMOA		30,743,704	1,816,383.94	
PIPELINE PROJECTS				
GEF 6 - IMPRESS				
SUBTOTAL - PIPELINE SAMOA				
TOTAL ESTIMATED RESOURCES - SAMOA				

OUTPUT 3: LAND MANAGEMENT

To facilitate and implement sustainable land management and administration of land-based resources.

SUB OUTPUT 3.1 CUSTOMARY LAND LEASE SECTION

Performance Measures	Targets
Percentage of applications for government land leases, land taken for public purposes and reclamations approved by Land Board.	100%
Percentage of application for valuation processed and approved, which complied with the valuations requirements in Land Valuation Act 2010.	100%
Percentage of instruments registered and approved which complied with the Land Titles Registration Act 2008.	100%
Percentage of Land claim applications for land commission processed on time.	80%
Percentage of applications for cemetery plots processed and approved.	100%
Percentage of applications for sandmining, scoria mining, sea reclamations and applications for temporary use of government land for billboards, banners and stalls processed and approved.	100%
percentage of applications for customary land leases and licenses processed and approved	100%
Percentage of customary lands used for economic purposes.	75%

3.1.1 Management of Customary land leases & licenses

The Customary Land Lease Section of the Ministry administers the licensing and leasing of customary lands on behalf of the Minister who is the trustee for beneficial owners of customary land in accordance with the provisions of the Alienation of Customary Land Act 1965.

Quantitative Performance

The following works were carried out during the year:

- 30 site inspection of new leases and the current ones in Upolu and Savaii;
- 25 mail delivery of rental advice and decisions on customary lands;
- 20 Publications of New Lands that needs to be leased and PVs for family use.
- Preparation of Legal documentation of new leases and old ones without documents
- Continuous updating database of customary lands;
- Updating and sorting of customary land lease and PVs files into chronological order to ensure they are updated for scanning and database.
- Conduct meetings with Beneficial Owners on ways for the economic use of their customary lands that are not in used to generate income.
- Collaborate with CLAC to facilitate their meetings in publicizing their role for the economic use of customary lands in Samoa.

Types of Land Lease Table 5

2014 - 2015 -			
Types of Lease	Savaii	Upolu	Total
Business	4	6	10
Church	1	3	4
Hotels	-	1	1
TOTAL	5	10	15

There are some Leases that are already being publicised but still in the process, pending court decisions due to objection. 15 new leases for the current financial year as shown in the table above.

There is a slight drop in revenue from the commission earned for leasing customary lands on current financial year 2014 – 2015 compared to last financial year 2013 – 2014.

It is estimated that the current financial year 2014 – 2015 earned a deficit differences of \$7,463.25 compared to last. This is due to the fact that many Beneficial owners agreed to keep and withdraw their lease monies within a two(2) year and a five(5) year period. These periods for most of these leases came to an end on the last financial year (2013-2014) causing the increase.

Other reasons include some lease monies were withheld as Matai Titles are vacant due to death and the next heir is yet to be decided by the family or Lands and Titles Court.

Lastly, some leases were paid in advance and were later withdrawn in preceding years.

The Ministry is currently at Phase (iii) of Promoting Economic Use of Customary Lands in Samoa. The main focus is promoting customary land as a vehicle for improving the economic well being of the country by opening up these lands for development purposes that will promote sustained economic activity. This lead to the establishment of the Customary Land Advisory Committee (CLAC) that deals directly with the promotion of customary land for leasing purposes in order to enhance economic development, especially in the rural community.

Sub Output 3.2 Land Administration Section

In March 2012, the administration of customary land leases was removed from the land administration and was established as a separate section resulting in the re-structuring of the land administration functions to focus mostly on the matters concerning government lands.

The section strives to implement system of best practices and procedures for the sustainable administration of government lands. The section is responsible to and therefore its core function is to provide secretariat services to the Land Board.

The Land Board is a statutory board established originally under the Land Ordinance 1959, and later under the Land Survey and Environment Act 1989, whose duties include the administration, management, development, alienation, settlement and protection and care of Government land.

Table 6. Revenue from the 5% commission in leasing customary land and other services for the period 2014-2015 compared to 2013-2014.

2013 – 2014				2014 - 2015		
YR	MONTHS	REVENUE	Differences	YR	MONTHS	REVENUE
2013	July	\$10,639.14	\$3,735.33	2014	July	\$14,374.47
	Augt	\$8,290.51	-\$949.79		Aug	\$7,340.72
	Sept	\$19,377.23	-\$15,365.77		Sept	\$4,011.46
	Oct	\$2,912.30	\$2,911.57		Oct	\$5,823.87
	Nov	\$3,938.28	\$33.48		Nov	\$3,971.76
	Dec	\$3,746.04	-\$1,891.51		Dec	\$1,854.53
	Sub-Total	\$48,903.50	-\$11,526.69		Sub-Total	\$37,376.81
2014	Jan	\$5,284.44	-\$1,629.00	2015	Jan	\$3,655.44
	Feb	\$3,006.66	\$434.00		Feb	\$3,050.00
	Mar	\$2,471.01	-\$27.85		Ma	\$2,443.16
	Apr	\$3,759.57	-\$1,221.00		Apr	\$2,538.57
	May	\$1,814.46	\$5,726.95		May	\$7,541.41
	June	\$2,118.07	-\$224.32		June	\$1,893.75
	Sub-Total	\$18,454.21	\$2,668.12		Sub-Total	\$21,122.33
	TOTAL	\$67,357.71	-\$8,858.57		TOTAL	\$58,499.14
					Other Services	\$1,395.05
	TOTAL	\$67,357.71	-\$7,463.25		TOTAL =	\$59,894.19

3.2.1 Management of Government Lands

The Government lands are managed by the Land Board in accordance with Parts I to VII of the Lands, Surveys and Environment Act 1989.

Quantitative Performance

The Land Board is authorized to:

- Purchase any freehold land or interest of any lessee in any Government land for the purposes of farming, urban development, settling commercial or industrial land and/or for any other government purpose;
- Alienate Government land by way of lease only for any purpose in accordance with procedures set out there under the Act;
- Develop land held by the Board for purposes required for by the Government;
- Exchange in fee simple of any government land for any other land as well as receive or pay any sum by way of equality of change.
- Reserve any strip of land held, for soil and/or water conservation

The land administration carried out the following activities in the financial year 2014-2015

- secretariat support for 12 Land Board meetings and 2 Special meetings.
- Advertise, receive and process applications to lease government lands.
- unregistered leases with the new system of land registration.
- Land exchange as approved by the Board
- Taking of lands required for public purposes
- Tendering contract for road development at Tanumalala
- Invitation for bids to carry out renovation works for the Samoa Post Building at Matafele

- Inspections of all government land in Upolu and Savaii.
- Collect rental payments for all government land leases
- Supervision and maintenance of cemetery subdivision at Maagiagi, Tufuiopa, Vaimoso, Tafaigata and Vailele
- Process applications for burial plots
- Construction of new gates for government cemeteries at Tuifuiopa, Vailele and Magiagi
- Carry out negotiations with Aleisa subdivision on government lease lands

3.2.2 Tendering Contract for development of the access road at Tanumalala.

Table 7. New Leases recorded for the reporting period 2014-2015.

LOCATION	SELECTED BIDDER	COSTS
1. Tanumalala	Alafua Transport Ltd	\$428,885.60

Total application lodge to the Board Meetings includes application for lease land, permit to use government land for different activities temporary. Most applications approved include assignment of lease, surrender of lease, a permit to use part of government lands for signs and other minor activities. Other applications deferred for other board meeting to discuss a final decision.

Table 8

	LOCATION	SELECTED BIDDER	COSTS
1.	Matafele (Samoa Post Building)	Misa Ioane – Auapaau Construction	\$46,218.50
2.	Matafele (Samoa Post Building)	Riverside Company – Roofing Renovation	\$47,100.00
3.	Vailele Cemetery – 4 Concrete Slap	A.A Schuster Construction	\$27,760.00
4.	Vailele Cemetery – Entrance Gate	A.A Schuster Construction	\$37,500.00
5.	Tufuiopa Cemetery – Entrance Gate	A.A Schuster Construction	\$11,475.00
6.	Magiagi Cemetery – Entrance Gate	A.A Schuster Construction	\$18,283.00
7.	Tafaigata Cemetery – Re-Construction of Gate	M.A Construction	\$21,500.00
8.	Tafaigata – CEMETRY Construction of Rail	Riverside Construction	\$16,750.00

Table 9

Financial Year 2014-2015	# New Application Tabled	# of Application Approved	# of Application Decline	# of Application Deferred
TOTAL	81	45	17	19

3.2.3 Request for Quotation (Invitation for Bids) to carry out renovations works for Samoa Post Office – Phase 1, and Procurement for cemetery.

The main source of revenue for the section is the collection of rental payments for land leased to the public at the following subdivisions: - Afiamalu, Aleisa, Apia Park, Laloanea, Land reclamations, Miscellaneous (government lands in and surrounding the Apia area), Motootua, Nuu, Salelologa, Tanumalala, Tiavi, Toomatagi.

As expected, the revenue is considerably higher in the first two (2) months of the fiscal year as most of the rents for the leases are due by July of each year (that is, the beginning of a fiscal year).

Based on the records provided, there is a slight drop of the total revenue for 2014-2015 compared to FY 2013-2014. Collection of lease payments for Afiamalu and Tiavi were not compulsory as these areas have been approved by the Land Board to be taken as reserves for water catchment. In addition, some of the lessees paid their lease charges in advance which lead to no lease payment for the current financial year.

Revenue from government land leases

(FY July 2014 – June 2015) Table 10

SUMMARY	Total (\$AT)
Aleisa	\$ 25,400.00
Tanumalala	\$ 15,669.00
Miscellaneous	\$ 305,336.31
Reclamation	\$ 81,944.00
Salelologa	\$ 25,750.00
Nuu	\$ 4,320.00
Toomatagi	\$ 500.00
Afiamalu	\$ 4,773.00
Tiavi	\$ 700.00
A&F	\$ -
Laloanea	\$ 7,800.00
Motootua	\$ -
Apia Park	\$ 2,200.00
Registration	
Other Fee (tender etc)	\$ 2,350.00
Taumeasina	\$ 36,697.23
TOTAL FOR July 2014 - July 2015	\$ 513,439.54

Despite the decrease in lease revenue, the section has continued to receive more applications for burial plots not only for current use but also as for reserves for future use.

Revenue Collected from burial plots - Table 11

Location	Revenue
1. Tafaigata	(26) \$ 18,600.00
2. Vailele	(19) \$ 5,700.00
3. Magiagi	(6) \$ 1,800.00
4. Tufuiopa	(3) \$ 900.00
TOTAL REVENUE	\$27,000.00

Total Revenue collected during financial year
July 2014-June 2015 - Table 12

Source of Revenue	Amount
1. Lease Payments	\$513,439.54
2. Burial plots	\$27,000.00
TOTAL AMOUNT	\$540,439.54



Sand Mining at Salamumu

Sub Output 3.3 Land Development Section

The Land Development Section provides Policy & Regulatory Advice on all sustainable land management issues and matters.

This Section is also the main focal point for the coordination and implementation of the United Nations Convention to Combat Desertification (UNCCD), which aims to address land degradation concerns in Samoa. In addition, Land Development staff is continuing to provide counterpart assistance and follow-up developments to ensure maintain Samoa's Capacity Building and Mainstreaming of Sustainable Land Management (SLM) Project. Moreover, the section provides administrative support for the GEF-5 SMSMCL "Strengthening multi-sectoral management of Official Landscapes in Samoa" during its initial development and assist in recruitment of its project staff.

Various functions of the Land Development Section which operates under the Land Management Division includes the:

1. Review existing national policies and mechanisms on lands and land-based resources (sand, reclamations, and quarry sites) and land development activities (stalls).
2. Develop new and strengthen existing regulatory and monitoring systems for resource use and land development activities.
3. Effective regulatory administration of sand mining, scoria mining, reclamations on government and customary lands.
4. Efficient administration of temporary utilization of government lands (stalls, billboards, banners)
5. Effective administration and coordination of UNCCD activities with stakeholders
6. Provides support services to the Project Management Unit (PMU) of the GEF-5 SMSMCL Project.

3.3.1 Policy Development and Implementation

The Section lead the Division in undertaking an Internal Training on Policy Development and Formulation with the purpose to continue on with a Consultation and Workshop with Stakeholders and the community to review the existing policy such as the sandmining policy.

3.3.2 Sandmining Operations

Applications for permit to mine the sand showed that 16 applicants were for commercial works and 42 applicants were for individual and private work which showed a difference of \$6,551.85 rise in the revenue collected within this financial year 2015 if compared to last year's (2014) revenue. There is a profit of \$6,551.85 in the revenue collected in the year 2015.



Illegal Sandmining, Lelata River



Illegal Sandmining

Table 13. Revenue collected from Sandmining Activities

Month	Commercial				Individual				Total	
	# of Permits Issued 2013-2014	2014-2015	Revenue 2013-2014	2014-2015	# of Permits Issued 2013-2014	2014-2015	Revenue 2013-2014	2014-2015	2013-2014	2014-2015
July	1	2	\$1,000.00	\$700.00	(8)	9	(\$555.00)	\$520.85	(\$1,555.00)	\$1,220.85
Aug	0	0	(0)	0	(1)	4	(\$20.00)	\$530.00	(\$20.00)	\$530.00
Sept	0	1	(0)	\$100.00	(3)	3	(\$50.00)	\$120.00	(\$50.00)	\$220.00
Oct	1	1	(\$480.00)	\$400.00	(1)	2	(\$10.00)	\$180.00	(\$490.00)	\$660.00
Nov	1	1	(\$480.00)	0	(2)	4	(\$170.00)	\$235.00	(\$650.00)	\$235.00
Dec	0	0	(0)	\$600.00	(2)	3	(\$70.00)	\$810.00	(\$70.00)	\$816.00
Jan	2	1	(\$6,000.00)	\$400.00	(6)	1	(\$400.00)	\$200.00	(\$6,400.00)	\$600.00
Feb	1	1	(\$400.00)	\$5,000.00	(2)	2	(\$50.00)	\$200.00	(\$450.00)	\$5,200.00
Mar	0	2	(0)	\$3,400.00	(3)	2	(\$510.00)	\$65.00	(\$510.00)	\$3,465.00
April	1	4	(\$1,200.00)	\$3,350.00	(1)	2	(\$400.00)	\$110.00	(\$400.00)	\$3,460.00
May	0	1	(0)	\$100.00	(4)	4	(\$340.00)	\$250.00	(\$340.00)	\$350.00
June	1	2	(\$640.00)	\$2,000.00	(0)	6	(0)	\$270.00	(\$640.00)	\$2,270.00
Total	8	16	(\$10,200.00)	\$16,050.00	(34)	42	(\$2,575.00)	\$3,490.85	(\$12,775.00)	\$19,326.85

3.3.3 Reclamation Issues

Table 14 shows that only 3 applications were lodged for reclamation works within the financial year 2014-2015 and if compared to last year's reclamation works, it showed 19 applications lodged and permit paid in for reclamation works.

Revenue showed differences of \$8,000.00 drop from revenue collected within this financial year 2015 if compared to last year's (2014) earnings.

Table 14. Revenue collected from Reclamation Works

Months	Applicants		Revenue	
	2013-2014	2014-2015	2013-2014	2014-2015
July 2014	(2)	0	(\$1,000.00)	
August 2014	(1)	0	(\$500.00)	
September 2014	(2)	0	(\$1,000.00)	
October 2014	(1)	1	(\$500.00)	\$500.00
November 2014	(1)	0	(\$500.00)	
December 2014	(0)	1	(0)	\$500.00
January 2015	(1)	0	(\$500.00)	
February 2015	(3)	0	(\$1,500.00)	
March 2015	(1)	1	(\$500.00)	\$500.00
April 2015	(1)	0	(\$500.00)	
May 2015	(2)	0	(\$1,000.00)	
June 2015	(4)	0	(\$2,000.00)	
TOTAL	(19)	3	(\$9,500.00)	\$1,500.00

3.3.4 Stall, Banner & Billboard – Activities

Administration of temporary stalls, banners billboards and other activities using government lands in the town area continues to be regulated by the Land Development Section. As shown in the Table 15 below, 70 applications lodged in and were issued permits to operate their stalls on Government land either at Mulinuu or Eleelefou within this financial year.

A loss of \$2,408.85 in the revenue collected in the year 2015. The main reason for the drop was due to reasons that there are people still seen to operate illegally on area such as bus stop, Sogi Park reserves and on foot-path in-front of ACC Building.

Number of permit issued with revenue for Stalls within the FY14-15 in comparison to previous FY13-14

Table 15

Months	Stalls using Govt. Area			
	# of Permits Issued		Revenue	
	2013-2014	2014-2015	2013-2014	2014-2015
July	(24)	14	(\$310.00)	\$115.00
August	(27)	2	(\$465.00)	\$1,510.00
September	(4)	4	(\$100.00)	\$110.00
October	(9)	4	(\$1,190.00)	\$110.00
November	(13)	11	(\$710.00)	\$660.00
December	(20)	10	(\$730.00)	\$540.00
January	(5)	1	(\$320.00)	\$60.00
February	(2)	3	(\$30.00)	\$115.00
March	(5)	-	(\$145.00)	-
April	(9)	3	(\$135.00)	\$60.00
May	(24)	18	\$680.00	\$265.00
June	(21)		(\$1,180.00)	\$165.00
Total	(163)	70	(\$5,995.00)	\$3,586.15

Number of permit issued with revenue for billboards within the FY14-15 in comparison to previous FY13-14

Table 16

Year	Permit		Revenue	
2013 – 2014 - 2014-2015	1	0	\$600.00	0

There was no application lodged in to erect a billboard or banner using government land during this financial year 2015.

3.3.5 United Nations Convention to Combat Desertification (UNCCD).

The Land Development Section continues to coordinate the implementation of the UNCCD. As a party to the Convention, Samoa is required to satisfy its various obligations and in particular, the formulation of Samoa's National Action Plan Programme (NAP) to combat land degradation and mitigate the effects of drought.

The Section had been undergoing meeting and processing in the development of Samoa's NAP Alignment Report.

3.3.6 Samoa's Capacity Building and Mainstreaming of Sustainable Land Management Project (SLM)
Coordinate follow-up after completion of the project in 2010.

3.3.7 Strengthening Multi-Sectoral Management of Critical Landscape in Samoa – SMSMCL Project

The SMSMCL project is a joint project by the Government of Samoa UNDP and is funded by the Global Environment Facility (GEF-5). The project was officially signed on 31st October 2013 and the first Project Group Meeting to initiate the project implementation was held in February 2014.

This project is the first upscaling initiative by the Government of Samoa to ensure land degradation issues across all level of society are well addressed through the integration of sustainable landscape management into planning framework and actions across multi-sectoral arrangements in order to achieve the Government of Samoa's long-term goal:

The primary objective of this project is to strengthen local capacities, incentives and actions for integrated landscape management in order to reduce land degradation and greenhouse gas emissions and promote nature conservation whilst enhancing sustainable local livelihoods. In order to achieve this objective the project will support local household and wider community actions to reduce pressures on natural resources from competing land uses in the wider landscape.

Performance Measures & Achievements

The main project engagements and achievements within the reporting period are summarized and presented in the *table 17* below.

Table 17 SMSMCL - Summary of Activities

	Main Activities/Tasks	Outputs reported as of 30 June 2015	Measures
1	Recruitment for Project Manager (PM) and a Senior Technical Advisor (STA)	Endorsed by Project Board and CEO as Chairman	Completed
2	Project Implementation Plan for Inception phase	Endorsed by Project Board and CEO as Chairman	Completed
3	Term of References (TORs) for four Technical Support Staff: Project Executive Assistant (1), Technical Advisors: Agriculture (1), Forestry (1), Media & Communication (1)	Endorsed by Project Board and CEO as Chairman	Completed
4	Recruitment of project support staff	Finalised and onboard	Completed
5	Project progress report for Cabinet Development Committee (CDC)	Reviewed and approved by CDC	Completed
6	Cabinet submission for project vehicle	Approved by Cabinet	Completed
7	Project Board Meetings (Quarterly)	Conducted 4 th Quarter Meeting	Completed
8	Quarterly Progress Report	Approved by the Project Board	Completed
9	Technical Consultation Workshops with reports	Conducted 3 technical workshops with full reports compiled	Completed
10	Inception Workshop Delivery	Conducted 2 Days workshop	Completed
11	Project Inception Report (PIR)	1 st Draft compiled	Compiled

Sub Output 3.4 Land Registration Section

3.4.1 Enabling Environment for Land Registration Services

Samoa Land is divided into three main categories, Government Land, Customary Land and Freehold Land. These categories have different percentage of land covered. The majority of Samoa's land is covered by customary lands of about 81%, government land is 14% and freehold land covers only 5%. These figures were calculated about eight decade ago, and it is believed that there are small changes if we will be doing a new assessment of Samoa's land.

The new computerized registration system is flowing well and efficient to respond to the needs of our people. We are continuing to input old information and scanned images of old records into the new software. The main aim is to ensure that all information is fully recorded for future references.

Quantitative Performance

Following are some of the achievements according to outputs described in the management plan and are related to the Land Registration, commencing 01st July 2014 to 30th June 2015.

1. Efficient land registration service

- Under the Ministry Service Charter, there are five working days given for work processing but we usually complete these processes within one or two days.

2. Maintenance of existing land records secured.

- Conversion and scanning of old information and records to the new system are continuing.
- As shown in the *table 20* next page the amount of internal service, that's the number of new folio created from subdivided land.

Table 18 Period, 01 July 2014 until 30 June 2015 (Internal Services)

	Services	Amount
1	Cancel Mortgage under Power of Sale	19
2	Cancel Title	251
3	Cancel Transmission under Transfer by Administrator	47
4	Cancel Miscellaneous	4
5	Change Estate Type	2
6	Change Right or Restriction	15
7	Convert to Title	63
8	Correct Registry	181
9	Correct Registry (Cancel Right)	114
10	Create New Folio	1035
11	Cancel Memorial	7
12	Record Memorial	14
13	Record Proclamation	0
14	Lapse Caveat	5
15	Record Esameent	10
	Total	1,767



Land Management Staff conducting sand mining survey

3. Update land registration database & records established.

- Table 19 shows application received for registration in this financial year 2014/2015 and all transaction in this table paid a fee of \$100.00 each.

Table 19 Period from 01 July 2014 until 30 June 2015		
	Services	2014/2015
1	Removal of Caveat	19
2	Removal of Court Order	1
3	Termination of Lease	23
4	Cancel Life Estate	0
5	Discharge of Mortgage	490
6	Cancel Transmission	1
7	Variation of Lease	5
8	Variation of Mortgage	121
9	Caveat	29
10	Court Order	1
11	Lease of Freehold Land	102
12	Lease of Government Land	19
13	Lease of Customary Land	23
14	Record Life Estate	0
15	Miscellaneous	11
16	Mortgage	564
17	Transmission	56
18	Transfer	649
19	Power of Attprney	67
20	Cancel Power of Attprney	4
21	Sublease Freehold	8
22	Record Standard Memorandum	9
	Total Received	2202

- Land registration database can be another tool to measure the growth and fall of the economic of Samoa. The table 20 below shows the difference of the two financial years 2013/2014 and 2014/2015

Table 20 DIFFERENCE OF DOCUMENTS RECEIVED AND REVENUE IN TWO FINANCIAL YEARS							
	Services	Application Received			Revenue		
		2014/2015	2013/2014	Different	2014/2015	2013/2014	Different
1	Removal of Caveat	19	39	-20	\$ 1,900.00	\$ 3,900.00	-\$ 2,000.00
2	Removal of Court Order	1	2	-1	\$ 100.00	\$ 200.00	-\$ 100.00
3	Termination of Lease	23	27	-4	\$ 2,300.00	\$ 2,700.00	-\$ 400.00
4	Cancel Life Estate	0	3	-3	\$ -	\$ 300.00	-\$ 300.00
5	Discharge of Mortgage	490	463	27	\$ 49,000.00	\$ 46,300.00	\$ 2,700.00
6	Cancel Transmission	1	5	-4	\$ 100.00	\$ 500.00	-\$ 400.00
7	Variation of Lease	5	1	4	\$ 500.00	\$ 100.00	\$ 400.00
8	Variation of Mortgage	121	115	6	\$ 12,100.00	\$ 11,500.00	\$ 600.00
9	Caveat	29	33	-4	\$ 2,900.00	\$ 3,300.00	-\$ 400.00
10	Court Order	1	5	-4	\$ 100.00	\$ 500.00	-\$ 400.00
11	Lease of Freehold Land	102	66	36	\$ 10,200.00	\$ 6,600.00	\$ 3,600.00
12	Lease of Government Land	19		19	\$ 1,900.00	\$ -	\$ 1,900.00
13	Lease of Customary Land	23		23	\$ 2,300.00	\$ -	\$ 2,300.00
14	Record Life Estate	0	1	-1	\$ -	\$ 100.00	-\$ 100.00
15	Miscellaneous	11	30	-19	\$ 1,100.00	\$ 3,000.00	-\$ 1,900.00
16	Mortgage	564	480	84	\$ 56,400.00	\$ 48,000.00	\$ 8,400.00
17	Transmission	56	51	5	\$ 5,600.00	\$ 5,100.00	\$ 500.00
18	Transfer	649	550	99	\$ 64,900.00	\$ 55,000.00	\$ 9,900.00
19	Power of Attprney	67	41	26	\$ 6,700.00	\$ 4,100.00	\$ 2,600.00
20	Cancel Power of Attprney	4	1	3	\$ 400.00	\$ 100.00	\$ 300.00
21	Sublease Freehold	8	2	6	\$ 800.00	\$ 200.00	\$ 600.00
22	Record Standard Memorandum	9	3	6	\$ 900.00	\$ 300.00	\$ 600.00
	Total	2202	1918	284	\$ 220,200.00	\$ 191,800.00	\$ 28,400.00

- In revenue, the evaluation we can calculate by 284 application that 2014/2015 more than the last financial year. The different of \$28,400.00 demonstrate that the development of Samoa is moving forward. We easily know the difference in Lease, Mortgage and Transfer application.
- Other sources of revenue collected are searches enquired by the public whereby we posted fees to be paid by them.

Table 21. Other source of revenue collected from searches and forms

Table 21

Service	2014/2015	2013/2014	Difference
Searches & Copies	\$ 18,460.00	\$ 21,765.00	-\$ 3,305.00
Forms	\$ 9,560.00	\$ 10,260.00	-\$ 700.00
Total	\$ 28,020.00	\$ 32,025.00	-\$ 4,005.00

- For the total revenue received from Land Registration Database shown by the table 23 below.

Table 23. Summary of Total Revenue generated by Source within the reporting period in comparison to previous Financial Year 2014-2015

Table 22

Source of Income	2014/2015	2013/2014	Difference
Documents for Registration	\$ 220,200.00	\$ 191,800.00	\$ 28,400.00
Searches and Copies	\$ 18,460.00	\$ 21,765.00	-\$ 3,305.00
Standard Form	\$ 9,560.00	\$ 10,260.00	-\$ 700.00
Total	\$ 248,220.00	\$ 223,825.00	\$ 24,395.00

- There are internal searches and copies made when requested by the staff for their investigation on land matters as most decision and assessment relied on land information.
- In these cases, we add up to more than 500 official searches and copies released.

4. Effective implementation of Land Title Registration Computerized System

- This is the Computerized System used for Registration land Title.
- Easy to locate specific files using Lot and Plan number without going through files.
- Easy to locate Historical search of single file through their Lot and Plan numbers
- Locality map accessible on the other side of the Computer Folio Certificated (CFC)
- The system provides a lodgement report of whatever period requested.

5. Effective feedback from the public on the land registration system

- Easy to locate and print out information required by clients.

6. Implementation of Unit Title Registration System

- No plan received for registration
- Need some special training in country and abroad for the staff to be fully equipped for implementing and sustainable of this service in the future

Sub Output 3.5 Land Commission Section

3.5.1 Land Titles Investigation.

Land Commission under the Land Investigation Act 1966, has the authority to investigate and determine titles to certain lands, and claims thereto. Also to enquire into each claim made to the Commission by any person to individual ownership, of or property in any land in Samoa other than land undoubtedly held by any person as individually for an estate in fee simple created or confirmed by a Crown Grant or a Court Grant.

There is a big change within land claims issues especially in the reduction of these long delayed issues. Some of the issues are still not complete due to owners/applicants who sought Office to reschedule their cases pending on their availability.

3.5.2 New matters already advertised by the Land Commission;

- Land Claim No. 131: Lands at Sinamoga & Moamoa Publicized in the Savali newspaper – 07 July 2014

There was no objection received by the Office after 6 months.

- Land Claim No. 132: Land at Aaai o Fiti Publicized in the Savali – 11 July 2014

There was no objection received by the Office after 6 months

- Land Claim No. 133: Land at Salelologa Savaii Publicized in the Savali – 22 July 2015

The 6 months period will be completed on the 26 January 2016, and so far no objection is received by the Office. There are five new issues received and are now under process and three (3) carried forward from 2013.

Sub Output 3.6 Land Valuation Section

Valuation Section under MNRE has begun its regulatory role as stated under our Land Valuation Act 2010 and the formation of its Land Valuation Committee.

This Committee aims to implement its administrative functions in monitoring of valuation practices in Samoa, developing valuation standards and exercising other functions given by Ministry such as the issuance of licenses, formulating policies and regulation for guidance to all valuers.

Valuation section is also responsible in providing valuation services to official government requests through our Land Board or from other government agencies, corporations and other institutions for purposes such as land exchanges, compensation, stamp duty, market value assessment and other requests.

Quantitative Performance

Other additional duties include the procurement of Stamp duty transfer documentation. These duties have being handed over to the Ministry from MOF in 2012.

On-going valuation tasks are as follows: (Table 23)

	Valuation Tasks	Expected Outcome	Timeframe	Expected Revenue
1	Updating and Monitoring of Formula Valuation System (FVS)	FVS is currently been published on the ministry's website	FVS is updated and published regularly on quarterly basis.	Provide land information as guideline to land values for all users.
2	Provide valuation advices for govt. corporations and others	Reports for compensations, insurances, land exchanges, rental/lease assessments.	Normally for these sorts of assignments, it requires a time frame of 2-3 weeks.	A minimum fee of \$500 is charged accordingly but can be assess from time to time.
3	Valuation assessments for individuals and general public.	The ministry is in the process of outsourcing to Private Sector		The Ministry will review and revised queries to resolve any disputes.
4	Provide valuation advices for Land Board and other government matters	Provide advice services to Land Board for land board matters.	These assignments usually last up to 2 - 3weeks	These are official tasks and charges will be assess accordingly
5	Issuance and providing Licenses to all valuer's	Eight (8) Licensevaluer's now awarded with Licenses	Land Valuation Committee assess and approve licenses	Annual practice license is \$250 p.a. License is \$500 (subject to review)
6	Collection of Land Sales Data & Inspect sales	Inspect sales and collect information for our database	Assess & update database on quarterly basis.	This information is made available to every user
7	Assessing of Stamp duty transactions	Transfer deeds are submitted from various individuals and law firms with necessary proof to finalized assessment	Assessments varies from 2-3 days if all proper documents are submitted and provided on hand.	New changes have occurred in stamp duty fees and approved by the Revenue Board.

Numerical projections of revenues as well as our daily work activities are clearly stated below.

Valuation Tasks & Projected Revenue Table 24

Valuation Tasks	Total Number	Total Revenue
Individuals/Corporations/Private	(160) 140	(60,000) 47,550
Advices to Land Board for compensation cases	(6) 18	These are considered as official valuation works
Advices to other Government ministries	(11) 3	2,000
TOTAL	(177) 161	*(63,000) \$49,550

Stamp Duty & Projected Revenue Table 25

Transfers (Deeds)	Total No. of Transfers (Deeds)	Total Revenue
Law Firms/Individuals	(453) 572	(\$2,346,882.86) \$1,918,416.95

(Note: *Figures from previous years are shown in parenthesis)

This annual year, noted an immense drop in the revenue earned for valuation services to financial lenders and the general public as the Ministry is currently in the process of outsourcing all individual valuations to financial lenders.

The Section will focus on the monitoring of valuation practices in Samoa and regulation to guide local valuer's in performing their valuation duties.

Achievements:

- Conducted several consultations with the Private Valuer and Stakeholders regarding Land Valuation Regulation (Draft)
- 3 Licensed valuers are currently with the Valuation Section (within MNRE)

Existing & Proposed Projects & Event

A proposal to create another section for Stamp Duty (under Land Management Division) should be established given that all legal documents (from MOF) will later transfer under Stamp duty of MNRE.

Sub Output 3.7 Customary Land Advisory Commission (CLAC)

The TA-8481 SAM: Promoting of the Economic Use of Customary Land - Phase 111.

The above ADB funded Project is into its 3rd phase and the main product so far is the Policy formulated, translated and forwarded to the Cabinet for approval in May 2015.

OUTPUT 4: SPATIAL INFORMATION AGENCY

Provide technical services to support the sustainable development and management of natural resources and environment.

Performance Measures	Targets
Percentage of survey plans received that comply with Survey Act 2010 and Survey Regulation 2011	90%
Percentage of survey plans received for scanning and recording on the Digital Cadastral Database approved	90%
Percentage of Unit Title Plans Received (New), Refer to Unit Title Act 2009	10%
Number of surveys directed by Land Board and MNRE for government lands.	14%
Percentage of surveys requested by Land and Titles Court completed	100%
Percentage of survey investigations and inspections conducted for survey work requested by the public	100%
Percentage of maps produced for the public (electronic and hard copies)	100%
Number of determinations approved by Geographic Names Board	14%
Percentage of topographical layers and modelling of sea level rise impacts on assets updates through collection of high resolution data through Lidar technology	50%

Sub-output 4.1 Survey Services.

Survey Section carry out all survey work requested by the Land Board, Divisions of the Ministry and any other works approved by the Minister or the CEO. Survey Section also responsible for inspection and investigation survey required by the Ministry and works executed by private Surveyors.

Geodetic Control Network

Survey Section is also responsible for the establishment, maintenance and upgrading of Geodetic Control Network. The networks consist of the horizontal and vertical datum. It is the framework or backbone of all surveys in Samoa. But in this financial year, there is small percentage of work completed due to time constrain and other urgency work that required our services.

Spatial Data Infrastructure

There are two Global Navigation Satellite System (GNSS) located at Faleolo and Fagalii airport which was known by the name Continuous Global Position System Stations (CGPS). The Survey Section is also responsible for the maintenance of both stations.

Fagalii GNSS station is to monitor climate change and Sea Level Rise in the region and it is the effort and collaboration by Australia (AusAid) and Samoa Government.

Faleolo GNSS station was installed in 1996 and it is a research project initiated by the University of Hawaii and in collaboration with the Institute of Geological and Nuclear Science of New Zealand and the Government of Samoa. This project is to monitor the crusty movements of tectonic plates of the South West of the Pacific Region. The data collected is relayed weekly to New Zealand for analyzing and provide yearly reports for enabling decision making.

Issuance of Surveyors License and Annual Practicing Certificates

This financial year, six annual practicing certificates were issued to Private Surveyors in the Private Sector, two are issued to Samoa Land Corporation (SLC) Surveyors and three were issued to Surveyors within the Ministry. The following are the registered licensed Surveyors in Samoa.

- Tuala Piki Tuala - Private Surveyor
- Manu'alesagalala L. E. P. - Private Surveyor
- Galuvao So'oalo V S - Private Surveyor
- Seve Keilani Soloi - Private Surveyor
- Alaiasa S Salanoa - Private Surveyor
- Seiuli U Seiuli - Private Surveyor
- Safuta T Iulio - MNRE
- Asi Vitaoa P Fuatai - MNRE
- Tupai Eseta M - S L C
- Levei Tanoi Auelua - SLC
- Lemalu Petania Tuala - MNRE

Performance Indicator.

Within this financial year, the survey section performed extremely well to achieve its target and completed most survey requests by the Ministry and the Government within its agreed timeframe. The services are provided in accordance with all relevant Survey Regulations, Acts and Ministerial Policies in all land related matters.

Table 26

Work execute	Status	Number of Lots	Combined Areas(hectares)
Redefinition Survey	8 requests, 8 completed	18 lots	207.2960ha
Compiled Survey	1 request 1 approved	1 lots	0.2350ha
Subdivision Survey	7 requests, 5 approved and 2 ongoing.	38 lots	143.3879ha
Investigation\Inspection Survey	2 request 2 completed.	---	----
Land and Titles Court	1 request-ongoing		

Issues and Recommendations

Shortage of qualify survey staff and limited budget were major impacts on the services delivery by the section throughout this financial year.

Need more local\overseas training for survey staff and better budget bids for resources to provide services.

Sub-output 4.2 Survey Quality Assurance

Provide services to the public and to support the Land Registration System and various parts of the Ministry in:

- graphical presentation of cadastral boundaries,
- indexing of Land Survey informations on Record & Cadastral Maps.
- Issuance of Field Books,
- receiving and examination of all Survey Plans lodged by Licensed Surveyors.
- Scan and Record all approved plans on Digital Cadastral Database (DCDB).
- updating Solution for Open Land Administration (SOLA SYSTEM) for the Land Registration system.

Performance Indicator : Table 27

Outputs	Outstanding July 2013 - June 2014	New	Total	Outcome	Achievements	
					Complete	M
Survey Plans received and approved	2	209	211	198	198 approved	13requisitions
Plans to be scanned	-	198	198	198	Achieve	
Recording of Approved Plans on Sola	-	198	198	198	Achieve	
Miscellaneous {Additional Jobs}	Searching of Plans for (SFHA) at Motootua Soifua Manuia o Aiga request by Minister. MNRE					
	Digitised Land required road names at Vailele required by the Geographic Names Board committee.					
	Site visiting to building where the Post Office were					
	Preparing of residue plans request by Land Registration Sysem.					
	Investigation of plans and ownerships of the land and road at Vaitele Street.					
	Editing changes to the digital map for road names					
	Recording requested plans on the system					

Factors Affecting the Services of the Section

1. Quick turnover of the junior staff and limited budget.
2. Not enough space to do the job especially investigation needed (Need side desk for plans)

Revenue collected July2014 - June 2015 : Table 28

	External	Internal	Total
Examination fees	\$20077.90	\$574.00	\$20,651.90
Copies	\$23.00	\$32357.00	\$32,380.00
Total			\$53,031.90



Safuta T. Iulio (ACEO- SLA) & a village rep. during a field visit.



MNRE –staffs with village team at Aveavai, Aopo Savaii.

Sub-output 4.3 Frame Work National Spatial Information.

The National Spatial Information will continue with its usual services in providing reliable and accurate spatial information to assist internal and external users for a sustainable development of natural resources and the environment of Samoa.

Table 29

Effective and accurate data for mapping (Spatial Information)	Performance Indicator
1.1 Produced maps from aerial photography & satellite imagery (aerial photo interpretation/geo-reference)	1. 90% of maps achieved (topographic maps, ortho photo, aerial photo/cadastral, etc.)
1.2 Control of data sharing (Memorandum of Understanding and Deed of Agreement)	2. 5 request for MoU/ DoA none approved (no feedback from applicants)
1.3 Assist other divisions within the Ministry Divisions and other stakeholders for (GIS) Geographic Information System mapping.	3. 100% - Ongoing process for the Mapping section to assist using GIS mapping
1.4 Database updated for mapping	4. 100% achieved - Roads and streets to be mapped for the Geographic Names Board (decision making and naming of roads) central Apia Town Area and nearby villages.
1.5 Mapping and propose naming of roads and reserves requested by the Geographic Names Board.	5. 100% - Mapping for new site requested (GIS/GPS mapping) 6.75% - Forest mapping, new logging site, aerial photo and imagery interpretation etc.
1.6 Update mapping for development/ infrastructures in Samoa (by request)	6. Assist all projects for mapping request.
1.7 Assist Forestry Division in forest mapping and location sites for logging license.	7. Preparatory for the arrival of the final result of LiDAR data to update topography maps, awareness mapping for natural disaster and climate change issues.

Continue next page

1.8 Capturing of propose imagery to update mapping and the topography of Samoa. (LiDAR) hopefully by the end of 2015.	8. Ongoing mapping to interpret court decision. (MJCA & MNREpartnership)
1.9 Assist the Ministry of Lands and Title to map any land court decision when requested.	9. 100% - GIS/ GPS mapping for projects,national/international.(highlights of sea rises, climate change, maritime, bathymetry and deep sea minerals)
1.10 Support given to Projects mapping area requested using GIS/GPS for proposal and decision making.	10. Official coordinate data for territorial sea baseline, territorial sea and contiguous zone outer limits of Samoa signed by the Head of State and now with the Office of the United Nation for further actions and way forward.

Note: unrecorded maps were mostly for office use/Internal agreement for data usage within the Ministry.



Some of the Tecnical staff working on different locations.



Technical Management Staff assisting Sasina and Aopo over boundry disputes.



Technical Management working with the Community during a field visit

OUTPUT 5 : ENVIRONMENT & CONSERVATION

To implement sustainable development and management of biological resources and the environment including waste management

Performance Measure	Targets
Percentage of national reserves under management plan.	95%
Number of cetaceans Survey for Savaii completed and information gathered.	2
Number of yellow crazy ants and rats monitoring on Nuutele and Nuulua islands	2
Percentage compliance of all contractors in effective delivering of waste related contract services	100%
Level of awareness of the general public on chemicals and hazardous waste management	95%
Number of hawksbill nesting turtle survey completed for Upolu island	2
Percentage of awareness and educational programs on waste (solid, liquid and gas) conducted through media outlets and programs	80%
Number of legal frameworks/strategies developed and approved 1) Trade in Endangered Species Bill 2) Waste Regulation 3) NBSAP	3
Number of myna bird control operation in Samoa	2
Number of manumea monitoring survey in Samoa	2
Number of seashore birds survey on the offshore islands of Aleipata	2
Percentage of area restored on Mt Vaea National reserve through replanting and controlling of invasive trees.	20%
Number of National Reserves under maintenance work	13%



Performance Measures	Budget Standard	Traffic Light Progress Indicator	Annual Achievements
Percentage of national reserves under management plan.	95%	Achieved/ Completed	<ul style="list-style-type: none"> 18 of the 19 national reserves with management plans have been completed and awaiting their proclamations as nature reserves.
Number of cetaceans Survey for Savaii completed and information gathered.	2	Achieved/ Completed	<ul style="list-style-type: none"> 4 cetaceans surveys conducted in Savaii. A total of 32 sightings of cetaceans were recorded which included spinner dolphins, humpback whales and short-finned pilot whales.
Number of yellow crazy ants and rats monitoring on Nuutele and Nuulua islands	2	Achieved / Completed	2 Surveys Conducted in the 2nd half of FY 14/15 - For Aleipata Islands (Nuutele & Nuulua)
Percentage compliance of all contractors in effective delivering of waste related contract services	100%	Achieved/ Completed	<ul style="list-style-type: none"> Regular monitoring of - 15 waste collection contracts, 2 landfill maintenance contracts, 3 lawn maintenance contracts, 3 litter maintenance contracts, 2 sludge facilities maintenance contracts, 3 Public toilets contracts. 4 waste contracts have been terminated due to poor performance 5 cases of illegal dumping practices warned and monitored. Construction of tarsealed road for the Tafaigata landfill and sludge facility.
Develop project proposals for biodiversity and waste programs	95%	Achieved/ Completed	<ul style="list-style-type: none"> Project proposal for the national implementation of the Nagoya Protocol - UNDP Project proposal for Coral Bleaching - GIZ (Germany) Project proposal for the national implementation of the Mercury Initial Assessment (MIA) under the Minamata Convention - UNEP Project proposal for the review of the National Implementation Plan for Persistent Organic Pollutants (POPs) - UNEP Project proposal for the Monitoring and evaluation of POPs in Samoa - UNEP Project proposal for the management of Solid waste - JICA Project proposal to improve the implementation of the CITES -New Zealand
Level of awareness of the general public on	2	Achieved/	<ul style="list-style-type: none"> 10 awareness programs were conducted (SIDS meeting, Biodiversity

chemicals and hazardous waste management		Completed	<ul style="list-style-type: none"> Day, Environment Week, Schools awareness programs and a Combined workshops held in Savaii and Upolu)
Number of hawksbill nesting turtle survey completed for Upolu island	2	Achieved/ Completed	<ul style="list-style-type: none"> 2 nesting turtle surveys carried out at Satoalepai (Savaii) and Malua Theological College (Upolu) A total of 20 turtles (green and hawksbill turtles) were tagged. (16 turtles at Malua and 4 turtles at Satoalepai)
Percentage of awareness and educational programs on waste (solid, liquid and gas) conducted through media outlets and programs	80%	Achieved/ Completed	<ul style="list-style-type: none"> 8 of 10 schools (80%) and public awareness programs have been conducted in Upolu and Savaii through newspaper, radio, Tv, workshops, SIDs meeting and environment week celebration
Number of legal frameworks/strategies developed and approved 1) Trade in Endangered Species Bill 2) Waste Regulation 3) NBSAP	3	Achieved/ Completed	<ul style="list-style-type: none"> National Biodiversity Strategy Action Plan (NBSAP 2015-2020) endorsed by cabinet 5th National Report to the CBD Convention has already submitted to the CBD Secretariat Environment and Conservation Management Bill reviewed and submitted to the OAG for final review Waste Oil Regulation Model completed Final draft for Trade in Endangered Species Bill submitted to OAG Plastic Bag prohibition on Importation Amendment Regulation 2013 approved
Number of manumea monitoring survey in Samoa	2	Achieved/ Completed	<ul style="list-style-type: none"> 2 Ecological surveys conducted of Manumea and other native birds) in Taga and Gataivai conducted under the FPAM project. 2 new Community Conservation Areas (CCAs) have established at Taga and Gataivai under the FPAM project.
Number of seashore birds survey on the offshore islands of Aleipata	2	Behind Schedule	<ul style="list-style-type: none"> Postponed to Aug-Sept 2015. Delay in the reallocation and disbursement of project funds (GEF Invasive Project) for the surveys. Due to preparation for the SIDs meeting
Percentage of area restored on Mt Vaea National reserve through replanting and controlling of invasive trees	20%	Achieved/ Completed	<ul style="list-style-type: none"> 18ha of the 79ha of the Mt Vaea reserve have been restored Operational Restoration Plan for Mt Vaea reserve
Number of National Reserves under maintenance work	13%	Achieved/ Completed	<ul style="list-style-type: none"> 19 reserves are maintained (lawn, pruning, disposal) regularly twice in every 2 weeks. 1 new reserve at Malololelei has been established.

Additional Achievements:

No	SECTION	Additional Achievements	Progress Indicator
1	Terrestrial Conservation	<ul style="list-style-type: none"> ➤ 2 Myna Control Operations (13th 14th phase) conducted in Upolu (from Tuanai - Vaoala and Faleula - Falevao) ➤ 1 Training program for myna bird control practices and population count ➤ On-going monitoring of water lettuce (invasive species) around the urban area of Upolu. ➤ 10 awareness programs among schools and the public on biodiversity conservation issues. ➤ Special control and eradication operation for myna birds and monitoring waste collection services for the SIDS meeting at Tuanaimoto ➤ Assessed applications from researchers through the Bio-prospecting permitting process 	All Completed/Achieved
2	Marine Conservation	<ul style="list-style-type: none"> ➤ Recovery works implemented for 9 priority sites identified with degraded mangrove habitats in Upolu and Savaii ➤ Forty three (43) sites around Manono-tai, Upolu and Savaii were assessed to determine the distribution, density and impacts of the two identified marine invasive species – 1) crown of thorn starfish (alamea) and 2) introduced seaweeds (<i>Spatoglossummacrodontum</i> and <i>Codiumarenicola</i>). ➤ 8 scientific surveys for key sites in Upolu and Savaii based on the following data/information: <ul style="list-style-type: none"> • High-resolution seafloor bathymetry • Coastal topography • Seawater column/microbes • Bottom net ecosystem and metabolic activity • Bottom habitat mapping Heavy metal/nutrients for estuaries, • Coastal macrofaunal survey ➤ Five (5) GIS maps developed for (1) cetacean distribution (2) seagrass distribution (3) mangroves (4) coral reef habitat and (5) marine invasive species in Upolu ➤ Mangrove boundaries mapped for Samoa ➤ 5,000 mangrove seedlings successfully re-planted at Le Asaga Bay 	All Completed/Achieved
3	National Reserve	<ul style="list-style-type: none"> ➤ Establishment of a new reserve at Malololelei 	All Completed/Achieved

Continue next page 38

		<ul style="list-style-type: none"> • Ecological surveys for Laulii Lalomaua and Mauga o Salafai in partnership with the ICCRIFS project including Taga and Gataivai under the FPAM project. • Native tree planting initiative in partnership with J and M Gardens company. 100 native tree seedlings planted at Mt Vaea reserve. • Monitoring and maintenance works for reserves and waste collection services the SIDs meeting • Coordinate and lead the rattan eradication programme at Papasea site 	
4	Solid Waste Management	<ul style="list-style-type: none"> • Coordination of waste collection services during the SIDs meeting. • Assessed the renewal of importation licenses of 3 existing importers in accordance with the Plastic Bag Prohibition on Importation Amendment Regulations 2013. • Improvement works at leachate facility at Vaiaata Waste Landfill • Waste segregation/minimization programs in the urban area of Upolu • Waste characterization survey at Vaiala and Apia villages • Green waste survey for onsite composting at Tafaigata landfill • Monthly monitoring of leachate facility at Tafaigata landfill • Waste audit survey for accommodation providers 	All Completed/Achieved
5	Chemicals and Hazardous Waste Management	<ul style="list-style-type: none"> • Construction of a tarsealed road at Tafaigata landfill • Coordination of side events for waste management for the SIDs meeting • E-waste inventory • Tendered works for the construction of 2 public toilets at Elelelefou and Mulinuu • Register for Chemical imports • Inspection of waste illegal dumping/practices in collaboration with PUMA and Solid Waste Section • Regional review and consultation process for the formulation of the draft Pacific Regional Integrated Waste Management and Pollution Control Strategy • Survey on asbestos waste in Samoa • Continuous assessment of feasible options for waste oil collection and disposal in collaboration with local private companies and SPREP 	All Completed/Achieved

OUTPUT 06: FOREST SERVICES

“To ensure the Sustainable Development and Management of Samoa’s Forestry Resources”.

Performance Measures Targets

Total hectares planted to restore degraded forest in National Parks and Community woodlots	100
Total hectares maintained in 4 National Parks	509
Total number of individual farmers/societies registered and participated at Sustainable Agroforestry/Woodlots Programs	200
One National Forest Plan developed	1
Number of research and species trials conducted	1
Percentage of forestry harvesting permits submitted and approved	100%
Number of national parks and community conservation areas management plans developed	3

Forestry Division consists of 3 main sections;

- (i) Forestry Management Section (Upolu and Savaii),
- (ii) Forestry Policy and Planning Section and
- (iii) Forestry Research and Development Section.

There are two existing projects that supports the implementation of the Forestry targets; ICCRIFS (Integration of Climate Change Risks and Resilience into Forestry Management in Samoa) project funded by GEF through UNDP and FPAM (Forestry Conservation and Protected Area Management) project funded by GEF-PAS and implemented by FAO.

Forestry Division has 5 extension offices; two in Upolu and now three in Savaii. The main office is at the Tui Atua Tupua Tamasese Efi building at level three (3); Upolu extension offices are located at Vailima and Togitogiga while the Savaii extension offices are at Asau, Maota and one recently established at Vaipouli where the old Vaipouli College was.

Quantitative Performance:

Outcome 6.1:– Sustainable Forest Conservation

To focus on the ecological restoration of the four National Parks (O le PupuPue and Lake Lanotoo in Upolu, Mauga-o-Salafai & Cornwall Estate in Savaii), greening of seawalls and establishing Community Conservation Areas (CCA) with the community.

Output 6.1.1: Effective development and management of 4 National Parks/Pūpū Puē, Lake Lanoto’o, Mauga o Salafai, Cornwall National Park

Ecological restoration in National Parks is an ongoing activity by means of replanting existing and dominant tree species of the natural vegetation cover of these National Parks. Among these activities includes the control and management of invasive species, particularly the merremia vine (*M. Peltata*) which densely cover and expand into considerable areas of the National Parks.

National Parks Ecological Restoration - Table 30

	National Parks	Annual Target (hectares)	Achievement (hectares)
1	O le PupuPue (Togitogiga)	25	19.0
2	Lake Lanoto’o	8	3.3
3	Mauga o Salafai	25	26.5
4	Masamasa/Falelima (Cornwall)	42	43.0
5	Vaipouli	0	0
	TOTAL	100	91.8

Maintenance (Weeding and Slashing) - Table 31

	Region	Annual Target (hectares)	Achievement (hectares)
1	Le PupuPue (Togitogiga)	476	475
2	Lake Lanotoo	50	24
3	Mauga o Salafai	512	516
4	Masamasa/Falelima	656	558
5	Vaipouli	203	176
	TOTAL	1,897	1749

Refilling (restocking of young planted compartments)

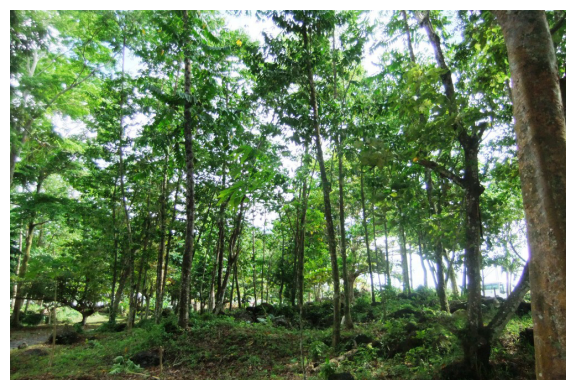
Table 32

	Region	Annual Target (hectares)	Achievement (hectares)
1	Le PupuPue	90	91
2	Lake Lanotoo	15	6
3	Mauga o Salafai	128	262
4	Masamasa/Falelima	133	111
5	Vaipouli	71	110
	TOTAL	437	580

Output 6.1.2: Programmes for Community Conservation Areas (CCA's)

A Memorandum of Understanding was signed between the Government of Samoa through the Forest Conservation and Protected Area Management (FPAM) Project and villages of Taga, Gataivai, and Matautu Savaii (3).

A biodiversity ecological survey was completed in the areas of the project sites in June 2015 in order to obtain the relevant data for the Project sites Management Plan. This will describe the priority strategies that will best maintain and improve the key conservation values in these areas. The draft management plans for these sites hopefully will be completed before end of year 2015.



Tuanaimato Reserve

Output 6.1.3: Strengthened partnership with stakeholders on forest conservation

Provided training and workshops to strengthen partnerships with relevant stakeholders and support ongoing forest conservation programmes for the local communities along with providing technical advice to interested farmers.

At the end of FY2014-15, four (4) stakeholder consultations were conducted, facilitated by the Forest Conservation and Protected Area Management (FPAM) Project which covered the villages of Matautu Savaii (Sato'alepai – Sale'ia), Taga and Gataivai.

More than 40 individuals from the villages participated in three separate consultation, while four (4) consultations were facilitated by the ICCRIFS Project for the villages of Tapueleele to Faga in Savaii.

A two day workshop was also conducted and facilitated by the ICCRIFS at Elisa Hotel on February 17, 2015 with great emphasis on Climate change adaptation in Upland Forest Management in Samoa

The Forestry division continued to raise awareness on sustainable forest conservation during the Environment Week in November 2014 on the island of Manono, World Wetland Day on 5 February 2015 at Sato'alepai Savaii and the International Water and Forests Day on April 24, 2015 at Vaisigano.

Output 6.1.4: Ecological restoration of 4 National Parks and Community Woodlots

The establishment of new community woodlots contributed to the ecological restoration activities, thus increasing the forest cover of Samoa.

Table 33

	Region	Annual target (hectares)	Achievement (hectares)
1	Vailima	10	12
2	Togitogiga	10	10
3	Maota	24	28
4	Asau	24	17
	TOTAL	68	67

Output 6.1.5: Greening of seawalls

Four (4) seawalls were targeted for both Upolu and Savaii regions for FY2014-15, however no seawall was planted with the completion of the PACC project.

Outcome 6.2: Sustainable development of forest resources strengthened

The division has put more weight in the development and promotion of village based woodlots with focus on timber production and other uses, empowering the community through proper management and ownership of their forest resources and appropriate land use management which is seen as one area that the public requires support in the development of forestry.

Output 6.2.1: Promote and support planting of bamboos

There was no planting of bamboo during the year due to the unavailability of planting materials and the limited number of seedlings in nurseries affected the implementation of this activity.

Output 6.2.2: Management of 5 Forestry Nurseries

These seedlings are raised within five (5) forestry nurseries, both Upolu (2) and Savaii (3).

Seedling Production - Table 34

	Region	Annual Target (seedlings)	Achievement (seedlings)
1	Maota	23,310	18,905
2	Vaipouli	8,143	3,700
3	Asau	23,513	17,317
4	Vailima	30,000	29,000
5	Togitogiga	24,000	17,000
	TOTAL	108,000	85,922

There was no set target for seedlings dispatched however; 77,000 was placed as a baseline for the number of seedlings dispatched out in the field for ecological restorations, community forestry programme, and new seawalls restoration as well as refilling of dead trees/plants which have not survived after planting within the first year of planting.

Seedlings dispatched - Table 35

	Region	No. of Seedlings dispatched
1	Maota	14,105
2	Vaipouli	913
3	Asau	10,893
4	Vailima	8,500
5	Togitogiga	1,950
	TOTAL	36,361

Output 6.2.3: Pre-Harvesting Inventory

Prior to granting a Forestry Harvesting License or Permit, the Forestry Division undertakes an assessment of the proposed harvesting operation. This assessment determines the estimated volume in cubic meters for timber tree species and determines the fees charged to the resource owner. The result of this activity will verify the granting of a Harvesting License or Permit to authorize commercial harvesting, as regulated under the Forest Management Act 2011

The table below shows the number of pre harvest inventory and monitoring conducted during the financial year 2014/2015

Table 36

	Regions	No. of Pre-harvest inventory conducted	Monitoring reports submitted
1	Upolu	5	12
2	Savaii	18	24

Output 6.2.4: Strengthening Community Forestry Programs (CFP) and agroforestry practices

Table 37

	Region	Annual target (no. of new farmers)	Achievements (no. of farmers)
1	Maota	50	52
2	Asau	50	18
3	Vailima	60	54
4	Togitogiga	40	24
	TOTAL	200	148

Forestry and Policy Planning Section

Quantitative Performance:

Outcome 6.3:- Planning and monitoring of forest resource strengthened

Output 6.3.1: Regulatory framework –

A draft forestry regulation is in place to be submitted to the Attorney General's office for final review. The draft regulation was drafted by a Legislative Drafter, Ms Sarona Ponifasio of the Ponifasio Law Firm with consultations coordinated together by the FPAM project and the Policy and Planning section in March 2015.

The forestry policy has been reviewed and a Consultant was also hired under the ICCRIFS Project to carry out this task. The final draft is to be submitted to the CDC for final approval.

The Forest National Plan outline was submitted by the Consultant however a draft is still needed to submit. Further work is still needed for this activity to actually come to its satisfactory level and to a final draft of the FNP.



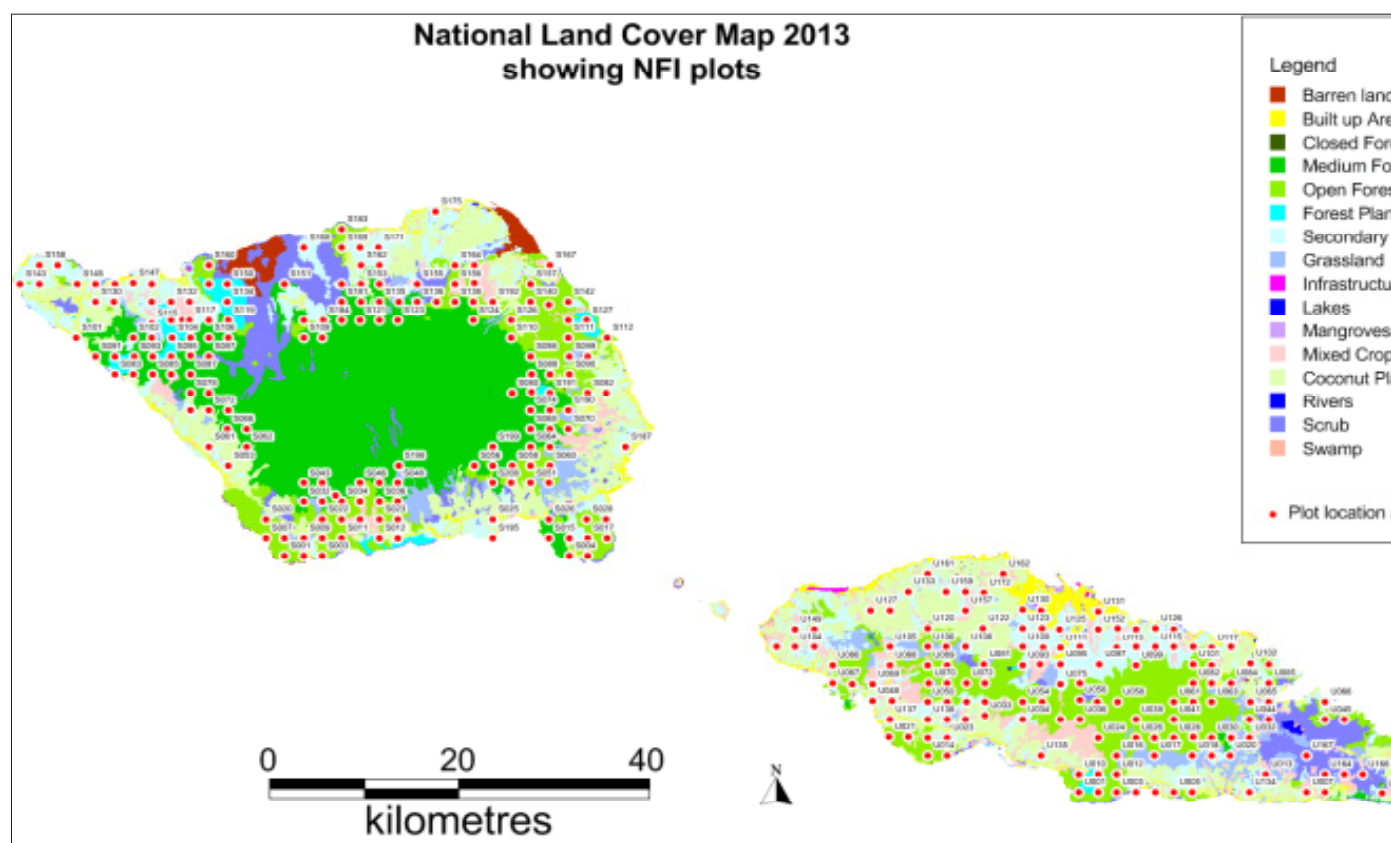
Output 6.3.3: Samoa Forest Resource Information System (SamFRIS) maintained

SamFRIS database has been updated from the National Forestry Inventory done in 2013 therefore the forestry data is currently new and updated at a 100% level. Maps of the Land cover of Samoa as a founded map of the forestry areas types of Samoa have been produced and distributed through our conducted awareness programs and on a request basis. Other living maps using GIS were produced on a request basis by the public and mostly students and consultants doing other environmental working reports and researches. Some of these maps include location maps for forestry community woodlots, forestry harvesting operations, project sites (FPAM & ICCRIFS), forestry rehabilitation/restorations.



Output 6.3.2: Formulation of management plans for National Parks

The section provided support in the development of the Management Plans for Mauga o Salafai National Park with financial assistance of the ICCRIFS Project.



Output 6.3.4: Registration of sawmills

Eleven sawmills have been registered in January 2015 from the five (5) sawmills registered in January 2014. All the eleven (11) sawmills were inspected at their sites to monitor their operating conditions and recording all details of sawmills for monitoring purposes and safety of the workers and the operation.

Registrations of sawmills are done respectively within the calendar year starting January to December. Registration fee is still \$500.00 however discussions were made with regards to amendments to the fee considering the lateness of registrations of other sawmills.

Awareness raising was also part of the inspection that was conducted early March 2015, regarding the conditions for sawmills that operator should consider and most importantly compliance under Forestry Management Act 2011 (registration of sawmills and conditions of the licence and permits that the sawmills are to operate at.)



Output 6.3.5: Awareness programs on forestry resources management and development

National awareness workshop programs on the regulation and policy were conducted in Savaii and Upolu as well as radio talk back promoting forestry.

Output 6.3.6: Forest harvesting permits and licences

The targeted numbers of permits and licence issued during this financial year exceeded because of the demands from the communities to harvest their forest resource for timber. A total of thirty eight (38) forestry harvesting applications were received, only 24 licences approved and 6 permits, 4 rejected applications due to the unsuitability of trees species applied to log and 3 applications withdrew because of family issues on land.



Forestry Research and Development Section

Quantitative Performance:

Outcome 6.4: Field research on forest conservation and development strengthened

6.4.1. Research on priority tree species for genetic resource conservation

- The phenology study was started on February 2015 to determine the flowering biology of tree species and variation that occurs across the range of species.

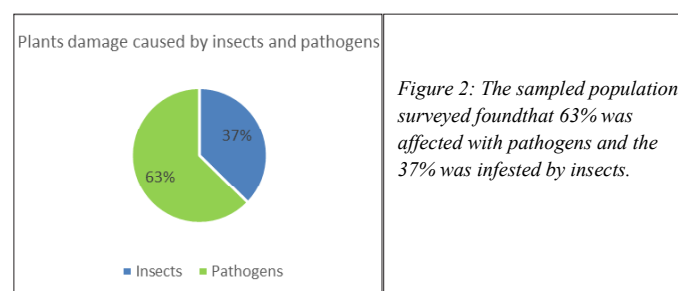
(The study targeted 45 individuals of 9 tree species particularly species have reached sexual maturity at different ages. Tree species did not reach maturity were excluded from the study).

Prior to the actual study, all tree species were tagged with unique code, measurements of DBH and different elevations using GPS. All the information were entered into GIS (MapInfo) to verify minimum distance required per tree species and to produce study maps. A study trial was conducted prior to the actual study to familiarize staff on the standard of procedure and locations of their allocated tree species. The study is expected to be completed within 12 months and results will be verified in the following year. *Species studied include ifilele, mamalava, tava, malili, asitao, poumuli, tavai, tiki and masame.*

Figure 1: Phenological stage of Masame(*Glochidionramiflorum*).

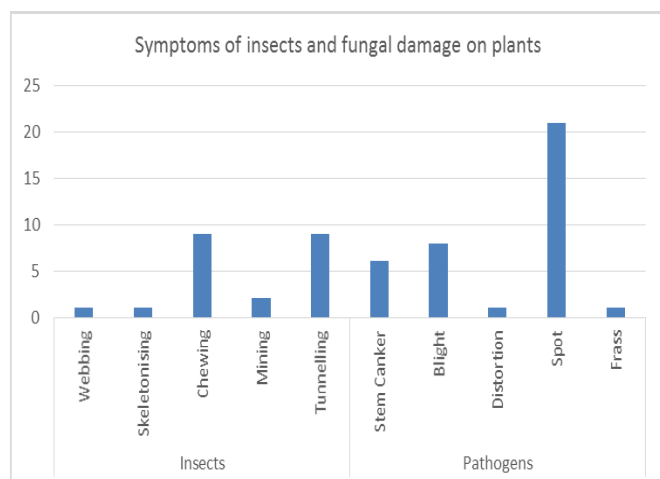


6.4.2. Research on pests and diseases of priority species for genetic resource conservation



- Poor plant health and plant damage can often be attributed to living plant pests. However, many plants problems identified in both Vailima and Togitogiga nurseries are often caused by non-living (abiotic) factor and most of these problems are preventable. Plant collection, maintenance and handling of plants in nurseries will prevent most abiotic plant damage. It is susceptible that the most common abiotic factors that contribute to plant problems in both nurseries are under-watering and over-watering. The following analysis summarizes the main causes of plant damage and symptoms of insects and pathogens on different plants.

Figure 3 below: Leafspots are among the most common symptoms affecting leafy tissues. Leaf spots are localized infections of leaves commonly caused by fungal pathogens but may also be the result of injury due to handling during plant collections or in nurseries.



6.4.3. Research on permanent and AF demonstration plots to improve farm productivity and tree development

Research Section in collaboration with ICCRIFS's project established eleven (11) agroforestry demonstration plots, five (5) demonstration plots in Savaii (Iva, Vaiafai, Lalomalava, Sapapalii, Fusi-Safotulafai) and six (6) demonstration plots in Upolu (Fusi-Saoluafata, Nuusuatia, Solosolo, Saoluafata, Leusoalii, Fusi-Safata).

Each plot were planted with short term crops, assorted fruit trees and sandalwoods species.

There are four (4) out of eleven (11) plots were selected for research to optimize the use of genetic diversity in both crop and tree components and to find out appropriate and reliable agroforestry systems that will provide regular returns to growers. Initial measurements of sandalwood species was recorded during the initial stage of planting and additional measurements will be taken in future monitoring program.

6.4.4. Application of propagation techniques to multiply priority species and fragrance species

The in-situ and ex-situ propagation experiment was conducted for the following tree species to find out which of the two interventions will aid the conservation and continued existence of these species. Both experiments were propagated from cuttings of several individuals per species. All species information was recorded including date of collection, soil type, elevation, location, coordinates and age class.

Tree species selected for experiment - Table 38

In-situ (Lake Lanotoo NP)	Ex-situ (Vailima Nursery)
Asivai (<i>Syzygiumclussifolium</i>)	Filimoto (<i>Flacourtiarukam</i>)
Filofiloa (<i>Ixorasamoensis</i>)	Auauli (<i>Diospyrossamoensis</i>)
	Tava (<i>Pometiapiinnata</i>)
	Malili (<i>Terminalia richii</i>)

Results obtained appear that tree species propagated at the ex-situ experiment were slowly wilted after several weeks of monitoring despite a constant care. On the contrary, about 2% of tree species propagated at Lanotoo NP were survived. The ex-situ experiment confirmed that filimoto, auauli, tava and malili are unable to maintain its populations and genes in intensively managed, easily accessible environments. However, the in-situ experiment indicated that there is a possibility for asivai and filofiloa to maintain its populations in the ecological and cultural context in which they have evolved if certain propagation procedures have been considered such as propagation and collection handling, constant watering etc. Further experiments will be conducted using different propagation techniques and different species to find out the most suitable techniques for each species.

6.4.5. Awareness programs to improve understanding on forest tree resources

- commemoration of the Environment Week 2014, World Wetlands Day 2015, Water and Forestry Day 2015
- Ongoing monthly update of two (2) databases; 1) Timber Exports and Imports Database; and 2) E-Flora database.

6.4.6. MEA's coordination and implementation (Ramsar Convention)

1. Intergration of Climate Change Risk & Resilience Into Forestry Management of Samoa (ICCRIFS):

To increase the resilience and adaptive capacity of Samoa to the threat of climate change through targeted adaptation interventions in lowland agro-forestry and upland native forestry areas

Quatitative Performance:

Outcome 1: Climate Risk and Resilience integrated into lowland agroforestry and upland native forestry policies, strategies and management techniques.

- "Final forest policy statement" has been consulted through private sector, stakeholder and national consultations. It is now in its final stages for submission to CDC for approval.
- The 2 automatic weather stations installed at project sites Saoluafata and Vaiaata are continually maintained and the data contribute to the overall national weather and climate forecast.
- A project progress update has been submitted to CDC for information, discussion and approval.
- The P3DM and CLEWS tailored to the Forestry Sector data has been digitized and updated into the SAMFRIS.

Outcome 2: Climate resilient and agro-forestry and forestry techniques are demonstrated in lowland and upland areas.

- Climate Resilient Agroforestry Demonstration plots for implemented with Forestry Division, Research Section for Luatuanuu, Fusi-Saoluafata, Nuusuatia, Lalomauga, Solosolo, Saoluafata, Iva, Vaiafai, Lalomalava, Sapapalii, Fusi Safotulafai, Fusi Safata and Leusoalii.
- Mt Salafai Nursery Training conducted to introduce basic operation and management of nurseries.
- Memorandum of understanding signed with the Samoa Farmers Association for the development of agroforestry demo plots for Luatuanuu, Solosolo, Fusi, Saoluafata, Vaiafai and Iva.
- Training on Participatory Action Research as part of the 5 modules for the institutional strengthening and capacity building program for strengthening community forestry and agroforestry in Samoa.
- Reflection workshop for Capacity building programme for strengthening community forestry and agroforestry in Samoa.
- Ecosystem based adaptation Management Plans developed for the 3 projects sites linked with FD
- Baseline ecological surveys conducted for the three project sites and draft and final report.
- Rehab of Mt Salafai and Lake Lanotoo upland area linked with FD and upland rehabilitation of Luatuanuu with community through the cash for work programme.
- Rehab of Laulii seawall linked with FD and DMO.

Outcome 3: Project Knowledge captured analysed and disseminated.

- SIDS Conference side event on P3DM and site visit to Luatuanuu for the Agroforestry demo plot and nursery construction as well as CLEWS community notice board.
- ICCRIFS website has been updated with links to the Meteorology Division which displays forestry tailored Clews products. The website is regularly updated with advertisements of consultancies, newsletters and published reports linked to other relevant sites.
- Australia students from University of Canberra visit for P3DM
- 6th World Park Congress to present on P3DM in Samoa and assist on assembling a P3DM model for the congress.
- Web 2 Social Media Training
- P3D Models developed and linked with STA and FPAM project.
- 3 Technical Report published : Review of current Agro-forestry techniques and systems practices in the 3 ICCRIFS project site on Upolu and Savaii Islands and the status of project activities, Vulnerability and Adaptation Assessment of Climate Change impacts to upland ICCRIFS forest sites and Predicted changes to vegetation communities and native samoan trees in future climate.
- National science fair “living with climate change” linked with MESC
- 8 Nursery signs installed for Mt Salafai project sites.
- Adaptation management plans for 3 project sites linked with FD

- ICCRIFS Calendar 2015 published and distributed.
- Pacific Climate change Round table (PCCR) meeting presentation on the role of P3DM in community decision making session 2 the role of strong enabling environment: government and decision making for achieving PIFACC themes, display area.

Outcome 4: Effective Project Management

- 4 Project Board meetings conducted and Project Quarterly Reports submitted and approved.
- Audit completed 2014
- 5 workshops completed : Forestry Tailored Clews Workshop (11-15th August 2015), Final CLEWS integrated into SAMFRIS 20-22nd October 2014, Mt Salafai Nursery Training 30 & 31st October 2014, workshop on adaptation vulnerability by CI, adaptation plan management workshop
- 5 Technical Support and Advisory Team (TSAT) committee meetings.
- 2 District Committee Meetings.
- 2014-2015 – UNDP GEF Annual Monitoring Report (AMR) & Project Implementation Review (PIR) for ICCRIFS Project.

2. Forestry and Protected Areas Management (FPAM):

To enhance sustainable livelihoods of local communities living in and around protected areas and strengthen biodiversity conservation and reduce forest and land degradation.

Quantitative Performance:

- Continue with the implementation of activities under Letter of Agreements (LoA) with the two service providers namely the MNRE and WIBDI.
- Preparing a new Letter of Agreement (LOA) with Samoa Farmers Association (SFA) to provide services required under Component 6 of the project which is SLM practices.
- Completion of the Manumea/Ecological Survey conducted by the Division of Environment and Conservation (DEC) at Taga and Gataivai sites during the months of December 2014 and January 2015.
- Development of the Participatory 3 Dimensional Model (P3DMODEL) for the project sites at Taga and Gataivai in December 2014, and one for the Matautu site in February 2015.
- Upgrading of project maps with new features of project work being achieved.
- Two trainings on Organic Farming conducted by WIBDI for all three sites in Savaii.
- Eco-cultural tourism study conducted at the Matautu CCA by a consultant in June 2015
- Ongoing activities on awareness throughout the year and participation in national events like Environment Week, Biodiversity day, Water & Forests Day, etc.

OUTPUT 7: METEOROLOGICAL DIVISION

To provide meteorological (weather & climate services), geo-science (geology & geophysics) ozone and climate change services in support of sustainable development of natural resources

Performance Measures	Targets
Percentage of daily weather bulletins and weather summary issued	100%
Percentage of special weather bulletins issued	100%
Percentage of climate summary and early warning reports issued	100%
Percentage of ozone depleting substance data reports produced and disseminated to stakeholders	100%
Percentage of geomagnetic reports issued	100%
Percentage of earthquake reports analysed and issued	100%
High quality data available derived from automatic weather stations for preparation of weather reports	85%

4. Human & Financial Resources (Revenue & Expenditure)

The division revenue collected achieved an amount of \$SAT13,140 a 16 % of the appropriated target amount of \$SAT80,000 for the year ending June 2015 and falls short of the target, the contributing factor related to the reduction in works from the construction and building industry.

This year the operating expenditures exceeds appropriation of \$319,530 a continued trend from past fiscal years with core activities consuming most of the operational budget – electricity and internet, nature of work 24/7 and high-band width download.

A slight increase of personnel costs of 5 % to \$ 1,035,075 to increases in salary paid staff with public service transfer of casual employees to staff from September 2014

5. Outcomes and Outputs

5.1 Weather Services

Outcome: Improve quality and accuracy of forecast products; enhance performance of the weather services staff
Outputs:

5.1.1 Enhance maintenance of weather section infrastructure – proposal to the World Bank to revive the 3 AWS from the Japanese small projects scheme 2005 -2008;

5.1.2 Enhancing Data Quality Control – continue entry of daily synoptic data by weather operations staff and push data into CLiDE database;

5.1.3 Quality daily public and coastal forecasts – forecasters loading of daily weather bulletins into the new web-site, improve on the graphic displays ;

5.1.4 Provide Aviation services – complete of QMS, and delivery of Aviation weather to incoming/outgoing flights;

5.1.5 A Quality Management System (QMS) – continue to work on the ISO/ICAO standards;

5.1.6 Enhance staff capacity building – overseas training continue to be the building blocks in building the capacity of weather staff – WMO, KMA;

5.1.7 - Effective operation and maintenance of Forecasting Systems: IBL and SMARTMET) – continue improvements in the IBL and linkage to the EWS for tsunami and earthquakes. SMARTMET is still not fully operational

5.1.8 Develop Severe weather forecasting products for non tropical cyclone events (SWFDDP); update of quarterly reports

5.1.9 Deliver timely and accurate weather forecasting – re-submission of Radar Proposal with additional requirements

5.2 Climate Services

Outcome: Adequacy of Climate data and information; and improve quality of products and services for multi-sector resource management use; knowledge and capability of staff enhanced
Outputs:

5.2.1 Efficient administration of Rainfall and Climate Observation Network. Strengthen maintenance and calibration of meteorological equipment to improve quality

Installed seven (7) automatic climate stations fully operational and thirteen GPRS (13) rainfall stations upgrade to near real-time transmission to Office for quality control and data entry;

5.2.2 Upgrade Climate Database Management System, Data rescue and Data digitization

Database Management work is on-going, daily manual data-entry into the CLiDE database by Climate Data Entry Operators (CDEO) funded by the Australia under the Climate Oceans and Support Program for the Pacific (COSPPac) project;

5.2.3 Effective monitoring of climate variability and long-term change (climate monitoring)

Complete the monthly Seasonal Climate Outlook report for the year and updates of El-Nino and Southern Oscillation (ENSO) event;

5.2.4 Develop new Climate Early Warning products and services for all sectors of Samoa starting with 9 NAPA priorities

The Climate Early Warning System continues to be operational for rainfall and the new forest fire index for drought warnings pilot test starting last month;

5.2.5 Effective Seasonal Climate, Rainfall and Temperature Prediction

The Seasonal Climate Outlook (SRO) reports disseminated each month, the Seasonal SST for the region included;

5.2.6 Collect and document Traditional Knowledge (TK) on Climate Predictions and Environment indicators;

Funds for the TK project secured for the survey and entering and storage of data into the database ;

5.2. 7 The timely Climate-Smart public awareness, on climate variability and long-term climate change

Website to launch in August and Newsletter updated every month;

<p>5.3 Ozone Services Outcome: Effective Implementation and Management of Ozone Project</p> <p>5.3.1 Continue the collaboration with relevant stakeholders regarding the Protection of the Ozone Layer Regulations 2006 Continue the review of Ozone Layer Regulations and Atmospheric Policy for further consultations</p> <p>5.3.2 Continue the effectiveness and efficiency in the implementation of the licensing System Follow-up on unlicensed businesses and importers of refrigerants</p> <p>5.3.3 Effective trainings with Customs Officers, MAF – Quarantine and SREA technicians One (1) workshop held for Customs Officers and MAF to refresh on removal of Ozone Depleting Substances (ODS) from refrigerators and air-conditioners equipment;</p> <p>5.3.4 Monitoring implementation of code of good refrigeration practices/procedures and standards Complete 2 inspection visits for Upolu and Savaii of Refrigeration Air-conditioners businesses, including calibration</p> <p>5.3.5 Implement of certification system for refrigeration personnel NOU continued its support to the Samoa Refrigeration Engineering Association (SREA) to work on the standards and organization of its activities</p> <p>5.3.6 Effective reporting to the Montreal Protocol Complete four (4) quarters of technical and financial reports submitted to the Secretariat</p> <p>5.4 Geological services Outcome: Effectiveness of systems for geological data management, and drilling operations</p> <p>5.4.1 Continue the effectiveness of geo-hazard and geotechnical investigation works</p> <p>Geo-technical drilling completed: SPREP-JICA for the PCC; Opus drilling, Tinai Gordon and 4 sites for the WRD</p> <p>5.4.2 Continue the effectiveness of mechanical engineering maintenance of drilling rigs and Office vehicles</p> <p>There a total of 20 services of Met. Office vehicles with 13 for MNRE maintenance of vehicles</p> <p>5.4.3 Develop Database of geological data, and digitization implementation</p> <p>On-going – research into a data base software for geology/digitization and CENC phase 2 of SCSN;</p> <p>5.4.4 Improve Geology information dissemination</p> <p>Populate geological information into the new web site;</p> <p>5.4.5 Develop Compliance and safety operation standards Manual Research and in draft form for consultations</p> <p>5.4.6 Strengthen and upgrade geological laboratory</p>	<p>Operational but with limited soil tests at this time, possible upgrade by China</p> <p>5.4.7 Establish a National Deep-sea mineral prospecting Legislation Continue on Samoa National Ocean Minerals Committee (SNOMC) for a DSM legislation;</p> <p>5.4.8 Establish International Partnership and Collaborations Request to the Peoples Republic of China (PRC) for a Phase 2 of SCSN</p> <p>5.5 Geophysical services</p> <p>Outcome: Establish framework for managing geophysical activities</p> <p>5.5.1 Effective Earthquake and Tsunami Warning Operations</p> <p>24/7 operations for Earthquake and Tsunami monitoring launched under the Samoa-China Seismograph Network (SCSN) project; analyzed EQ presented to Nodding Sessions</p> <p>5.5.2 Strengthen Monitoring Communication Systems</p> <p>Continue maintenance of communications infrastructure and radio networking for several broad band sites with some sites mainly Afulilo.</p> <p>5.5.3 Strengthen Maintenance and calibration of geophysical stations</p> <p>Continued maintenance of AFI Seismograph and CTBTO stations, tide gauge and seismic broad band stations at Afulilo, Togitogiga, Asau, and Vaiaata</p> <p>5.5.4 Improve Geomagnetism observations</p> <p>Continue to carry out geo-magnetic observations on a weekly basis and monitor variations .</p> <p>5.5.6 Identify Geo-hazards gaps Output carries forward to the next fiscal year</p> <p>5.5.7 Review and Produce Geophysical Awareness materials Collaboration with other sections – to be implemented in 2015 -16</p> <p>5.5.8 Develop a Geoscience Hazard Response Plan Work in collaboration with Disaster Management Office – to be implemented in 2015 -16</p> <p>5.5.9 Enhance and Strengthen International Partnership collaborations A project brief prepared and forwarded to experts from PRC for comments and Phase 2</p> <p>5.6 Climate Change services</p> <p>Outcome: Effective management and implementation of climate change projects</p> <p>5.6.1 Coordinate and Implement national adaptation initiatives Most of the NAPA completed except for ICCRIFS, Tourism, CCCPIR - GIZ</p>
----------------------------------------------------------------------------------------------------------------------------------------------------------------------------------------------------------------------------------------------------------------------------------------------------------------------------------------------------------------------------------------------------------------------------------------------------------------------------------------------------------------------------------------------------------------------------------------------------------------------------------------------------------------------------------------------------------------------------------------------------------------------------------------------------------------------------------------------------------------------------------------------------------------------------------------------------------------------------------------------------------------------------------------------------------------------------------------------------------------------------------------------------------------------------------------------------------------------------------------------------------------------------------------------------------------------------------------------------------------------------------------------------------------------------------------------------------------------------------------------------------------------------------------------------------------------------------------------------------------------------------------------------------------------------------------------------------------------------------------------------------------------------------------------------------------------------------------------------------------------------------------------------------------------------------------------------------------------------------------------------------------------------------------------------------------------------------------------------------------------------------------------------------------------------------------------------------------------------------------------------------------------------------------------------------------------------------------------------------------------------------------------------------------------------------------------------------------------------------------------	-----------------------------------------------------------------------------------------------------------------------------------------------------------------------------------------------------------------------------------------------------------------------------------------------------------------------------------------------------------------------------------------------------------------------------------------------------------------------------------------------------------------------------------------------------------------------------------------------------------------------------------------------------------------------------------------------------------------------------------------------------------------------------------------------------------------------------------------------------------------------------------------------------------------------------------------------------------------------------------------------------------------------------------------------------------------------------------------------------------------------------------------------------------------------------------------------------------------------------------------------------------------------------------------------------------------------------------------------------------------------------------------------------------------------------------------------------------------------------------------------------------------------------------------------------------------------------------------------------------------------------------------------------------------------------------------------------------------------------------------------------------------------------------------------------------------------------------------------------------------------------------------------------------------------------------------------------------------------------------------------------------------------------------------------------------------------------------------------------------------------------------------------------------------------------------

5.6.2 Coordinate and Implement donor negotiations, and National Climate Change Country Team meetings
On-going.

5.6.3 Mainstream and establish CC section within organization structure
Defer output implementation until CCO is appointed

5.6.4 Review and Implement the NAPA document
Completed the Climate Change Review – submitted to Cabinet

5.6.5 Develop Climate change communications strategy
Implemented when the CC division is established.

5.6.6 Public awareness and education
Working in collaboration with the Climate Services team

5.7 Legal Framework for mandate and operations
Outcome: Establish a legal framework for the management of the Meteorology Division

5.7.1 Develop Meteorological Services Act in the next financial year
Negotiations with the World Bank under the Pacific Climate Change Resilience (PREP), funding secured for a legal consultant

5.8 Communications Strategy
Outcome: Establish a communication strategy for effectiveness of awareness and visibility of Meteorology Division

5.8.1 Develop a communication strategy outreach
Activity carry forward to 2015 -16

5.9 Research
Outcome: Effectiveness of Research in the field of climate services, climate change, geo-sciences and weather

5.9.1 Establishment of the Meteorology Research Group (MRG) to deliver this outcome
Carry over to 2015-16 fiscal year

7. Issues and recommendations

7.1 Limited resources in the budget for operational costs – i.e. internet and electricity recommend increase of budgetary allocation;

7.2 Action on the Job Classification System (JCS) proposal already submitted to boost staff morale and retention of them with specialized skills and expertise.

OUTPUT 8: PLANNING & URBAN MANAGEMENT SERVICES

This appropriation is limited to the provision of planning and urban management services to support the sustainable development of natural resources

Performance Measures	Targets
Percentage of development consents approved	98%
Percentage of enforcement orders issued for activities that breach PUMA Act 2004	80%
Percentage of nuisances/environmental pollution reports lodged	100%
Percentage of development consent submitted	100%
Development of an Apia Spatial / Town Plan	1
Institutional and legal reform of PUMA	1
Percentage of environmental assessment reports lodged	100%
Percentage of cases referred for legal action.	30%



Official Opening of the Malaefatu Play Ground 2015

OUTPUT 9: WATER RESOURCE DIVISION

“Integrating and Implementing Sustainable Water Resources Management across all relevant Sectors”

Performance Measure

Cumulative number of watershed management plans developed and approved	11
Percentage of Watershed Management Plans under implementation	40%
Groundwater potentiometric map developed using established monitoring boreholes	15%
Cumulative total hectares of prioritized watershed areas rehabilitated and /or declared reserve	242ha
Number of monitoring boreholes drilled and feasible for groundwater monitoring	3 new boreholes
Number of strategies under implementation including regulatory tools enforced, in proportion to the number of policies, strategies, legislative and regulatory tools already in place	15
Established community extension services within critical watershed areas	85%

1. Introduction

A number of key activities were implemented during financial year 2014-15. On top of that, huge time and effort went into the cleanup of rivers and drains in preparation for the Small Island Developing States (SIDS) Conference which was hosted by Samoa in September 2014.

A number of consultations were undertaken and preparatory work for key watershed areas to be reserved was also initiated. The World Water and Forests Day 2015 was also a hit with the public and stakeholders, as well as the politicians and diplomatic corp.

There were a number of monitoring boreholes developed and several projects were also initiated for the upcoming years. Implementation of ongoing programs was also a major part of the 2014-15 work plan for the Water Resources Division (WRD).

The following report looks at the achievements by the Division, and tracking these against the planned programs of the “Budget Targets 2014-15”, “National Environment Sector Plan 2013-16” and the “Water for Life: Water & Sanitation Sector Plan 2012-16”.

2. Achievements

2.1 Strengthening Watershed Conservation and Management; Watershed protection and conservation is one of the main priorities for the Water Resources Division. Much of the conservation efforts involve the rehabilitation of degraded areas, and the extension of protected riparian environments. There is also a lot of work that goes into the formulation, implementation and enforcement of watershed management plans, and the increasing priority in the taking of critically threatened watershed areas (upstream) as reserves.

Performance Measures	Reporting Achievements of the FY 2014/15		
	FY 14/15 Targets	Measure of Achievement	Achievements
Number of Watershed Management Plans (WMPs) developed and approved	11 WMPs	100% 12 WMPs completed	<ul style="list-style-type: none"> Final drafts of WMPs for Sapunaoa/Piu and Tapueleele are in place. Awaiting recruitment of a team of TAs to compile an Integrated Watershed management Plan for Vaisigano. 6 WMPs have been endorsed by HoS: Tafitoala, Aufaga, Togitogiga, Vaipouli, LoA & Fuluasou. Processing translation, publication and distribution. 4 drafts awaiting CDC consideration: Gasegase, Solosolo, Faleaseela and Vailoa Palauli.
Percentage of Watershed Management Plans under implementation	35%	40%	<ul style="list-style-type: none"> Installed trash booms within Apia watershed rivers (Vaisigano bridge, Leone stream and Mulivai river) Ongoing monitoring and warning letters issued Community engagement plantings at Falease'ela, Nu'usutia and Vaisigano Temporary Community nurseries at Salani and Falease'ela Taking of lands as Reserves: there is a significant effort by the Government to reserve critical land areas at Malololelei; Completed fencing at Togitogiga, Malololelei, and Lepa spring as well as Vailele, Moataa watershed reserve. Ongoing River ecosystem health monitoring for LOA, Vaisigano, Fuluasou and Gasegase.
Cumulative Total Hectares of prioritised watershed areas rehabilitated and/or declared reserved	242ha	292.53 ha (23.6 ha)	<ul style="list-style-type: none"> 15.6 hectares of new rehabilitated watershed areas and extension plus the 20 acres (8 hectares of the NPF land at Malololelei) Negotiations are underway for other critical areas such as 69acres of Catholic Lands at Malololelei, Aiono Lands next to Lake Lanoto'o and also 50acres of the SDA lands at Tapueleele.

FY 14/15 Hectares breakdown and analysis		
Watershed/sites	Hectares	Analysis
Fuluasou Catchment Malololelei site	8	20 acres of NPF land at Malololelei that has been compensated for water conservation. The first 10 was included in the 24 ha of Malololelei FY13/14
Aufaga Catchment (Aufaga Primary School)	0.5	Tree planting activity that was conducted during the Awareness program as part of the awareness program for schools. 100 species were supplied.
Fagali'i Catchment	8.6	The buffer slope area at Fagali'i ford with the Land issue being settled. The family fenced out the area and cultivated it with taro and bananas. WRD have already replaced the fence and rehabilitated the area with native seedlings, signboards have also been installed.
Falease'ela Catchment (FEPS)	5.7	Falease'ela Environmental Project coordinated by Olsen and funded by UNDP. Approximately 8000 seedlings were supplied for the project.
Salani Catchment (Fuimaono's land)	0.8	Fuimaono's land. Rehabilitation carried out on the slope buffer strip and a nursery has been installed for the site.
TOTAL	23.6	

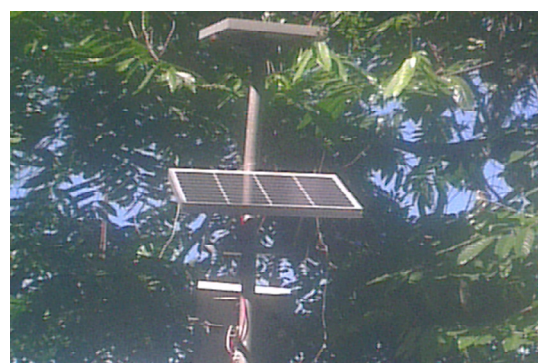


Fence installation at Moata'a and Vailele

Performance Measures	Reporting Achievements of the FY 2014/15		
	FY 14/15 Targets	Measure of Achievement	Achievements
Groundwater "potentiometric map" developed using monitoring boreholes	15% completed	15% achieved	20 boreholes have been established to inform groundwater monitoring and mapping. Collection of information from these bores are done on a monthly basis and is progressing well;
Number of monitoring boreholes drilled and feasible for groundwater monitoring	3 new bores on top of baseline	6 new boreholes established	<ul style="list-style-type: none"> • 4 new monitoring boreholes drilled and installed in Upolu at Matatufu, Mulivai, Togitogiga and Satalo and 2 in Savaii at Luua Faga and Safotu to update information on our aquifers; • There is now a total of 20 monitoring boreholes informing about 15% of the hydro-metric map of our aquifers;
Surface water monitoring	Ongoing	Ongoing	<ul style="list-style-type: none"> • Updated Flood Study for Vaisigano; • Upgraded 2 Savaii water level stations: Faleata and Seugagogo to telemetry systems for real time data; on top of the 1 water level: Alaoa East WL station and 1 rain gauge: Mt Le Pue already existed. • Provided technical support to modelling of the Vaisigano Levee Options (in cooperation with Water Technology) • Improved water quality monitoring at the different sites; • Water quality parameters of the REHM; • Continuing monitoring and data acquisition from all sites of the hydrometric network; • Flow gauging is undertaken at sites with no automated stations and at Alaoa West which is not operational at this time; • Continue to update the NWRIMS;



Drilling works and monitoring of boreholes at Safotu and Luua-Faga Savaii, undertaken by the WRD and the Meteorology Office drilling team.



Installation of Telemetry System at Faleatā Vailoa Palauli

Performance Measures	Reporting Achievements of the FY 2014/15		
	FY 14/15 Targets	Measure of Achievement	Achievements/Comments
Number of strategies under implementation including regulatory tools enforced	10 new regulatory tools developed	9 new regulatory tools in place	6 Water Abstraction Licenses; 2 Bylaws (Tapueleele, Sapunaoa); Upland Watershed Conservation Policy; Continue the coordination of the Water Resources Technical Committee and Water Resources Board Meetings;
National Water Resources Management Plan	Draft in place	Partially achieved	There are components now in place (as it is a composite plan) but the compilation of an overall plan is yet to be achieved; This activity requires the review of the Water Resources Master Plan (technical plan) so that it will better inform the Plan.
Drought Policy	To be drafted	Not achieved	The Tender for the TA to undertake this assignment is being done and will be carried out in the FY 2015-16



Licensing Work at the Safotu, Saleaula and Matavai 2 borehole facilities.



Tapueleele 1st Consultation



Sapunaoa 1st Consultation



Tapueleele 2nd phase community consultation



Sapunaoa 1st phase community consultation

Performance Measures	Reporting Achievements of the FY 2014/15		
	FY 14/15 Targets	Measure of Achievement	Achievements/Comments
Develop new partnerships with NGOs/CSOs (komiti tumama, schools etc)	Establish an effective community extension service within critical watershed areas	Ongoing	<ul style="list-style-type: none"> Community consultations with a number of villages within the Tapueleele and Sapunaoa watershed areas; P3D Model for the Vaisigano Catchment with the Forestry Division; World Water and Forests Day 2015; Radio Talk Back Show on – 2AP and FM 98.1/99.9; Newspaper etc. River Cleanup Campaigns involving stakeholders and communities; Ongoing assistance to villages requesting for assistance from the Ministry in terms of springs rehabilitation and deepening of the river channels.



World Water and Forestry Day - 2015

OUTPUT 10: DISASTER MANAGEMENT OFFICE

This appropriation is limited to the provision of disaster management and national emergency services to support sustainable development of natural resources

Performance Measure	Targets
Percentage of villages with endorsed and tested disaster plans	15%
Percentage of businesses, NGOs and schools with endorsed and tested disaster plans	20%
Percentage of response agencies trained and have endorsed and tested response agency plans	35%
Percentage of disaster risks reduction measures approved and implemented	20%
Percentage of the total area covered by the emergency radio network and early warning system(s)	100%
Percentage of sector plans with disaster risk management strategies	20%



OUTPUT 11 WATER SECTOR UNIT

Effective coordination and management of the water and sanitation sector programme.

Performance Measures	Targets
Updated Water for Life (WfL) approved by Cabinet with 50% of WfL Strategies under implementation	10%
50% of NWSP Strategies under Implementation	20%
Implementation of Sector Capacity Building Plan developed and under implementation	20%
National Water and Sanitation Survey Designed and Implemented	50%
Sustainable and effective sector financial mechanisms.	
Annual review and update of sector MTEF	Updated Sector MTEF 2014-2017
Effective coordination framework in place	
3.1 Regularity of NWSCC, JWSSC, TSC and subsector committees' meetings	100%
Robust and effective monitoring and evaluation systems in place	
Performance monitoring system in place and operational	10%
Sector Annual Reviews	2012-2013 Annual Performance Review Report Published; 2013-14 Annual Performance Review Report Draft
Independent bi-annual WfL evaluations	First bi-ennial evaluation undertaken (after 2 fiscal years)
Annual Water and Sanitation Forums	National Forum 2013 Research Papers Published in the Samoa Water and Sanitation Journal
Coordinated sector communication strategy	
Sector communication strategy developed and under implementation	10%
Strengthened sector disaster preparedness and response	
Implementation of Sector disaster preparedness and response plan in place with annual drills to test response procedures	10%
Improved knowledge of sector issues at the national and community levels to improve community engagement in all sector developments	
Increased access to sector related national research/survey/studies work	6-8 research / assessments
Increased Access to Safe Water Supply, basic sanitation and improved food security for Vulnerable Households	
Increased access to safe water supply and basic sanitation	700 vulnerable households with access to rainwater harvesting system and/or VIP latrine
Increased access to improved food security	700 vulnerable households with vegetable gardens

Performance Measures

Targets

Strengthened framework in place for improved plumbing trade

Legislative framework in place and enforced	Implementation and enforcement of Regulation at 5%
Increased percentage of certified plumbers	5%

Increased access to basic and improved sanitation

Percentage of households using improved sanitation facilities at the minimum of a VIP latrine	Baseline + 8%
Percentage of urban households with approved septic tank systems	39% (5% increase)

Effective nationwide education and awareness campaign on wastewater management and sanitation

Percentage of targeted households with improved awareness on sanitation including wastewater management and good hygiene practice	Baseline + 8%
-----------------------------------------------------------------------------------------------------------------------------------	---------------

Effective and strengthened regulatory framework with increased compliance

Percentage of new developments (residential, commercial and public) complying with existing policies, legislation and regulations (National Building Code/Septic Tank Standards, PUM Act 2004, National Sanitation Policy, Health Ordinance 1959 etc)	Baseline + 8%
Effective regulatory tools in place to strengthen the regulatory framework for improved sanitation	Implementation of MOU, Wastewater Odour Control and National Effluent Standards

Improved knowledge and capacity of Sanitation Implementing Agencies

Number of assessments conducted in critical areas including research on key sanitation issues	Baseline + 8%
-----------------------------------------------------------------------------------------------	---------------

Effective coordination of the Sanitation subsector programme

Regular monthly subsector meetings	Regular monthly subsector meetings
------------------------------------	------------------------------------

Sustainable wastewater and sanitation infrastructure

Number of public toilets upgraded (including construction of new facilities)	Nil until further studies to identify feasible sites
Percentage of public toilets fully operational and comply with national sanitation/hygiene guidelines	100%
Annual Maintenance of Sludge Facilities	Annual Maintenance Contracts for the 2 facilities;
Improved environmental monitoring of Sludge Treatment Facilities	2 Boreholes at Tafaigata



Pictures of events during the commemoration of the National Toilet Day 2014

OUTPUT 13. CSU1 – LEGAL SERVICES

Provide legal services to support the sustainable management and development of natural resources and the environment.

Quantitative Performance

The legal division provides legal and policy assistance to all 14 divisions of MNRE as well as the Minister and CEO. The Division is also responsible for doing all legal work required under the various projects that MNRE.

Some of these services include contracts preparations, assessing applications for alienating freehold land, execution and witnessing of legal documents, legal advice/opinions, internal training on compliance and enforcement, documentation for the acquisition of lands by the government, exchanges of land by government, leasing of government land and taking of lands for public purposes, assist in the processing of leases over customary lands, legal advice pertaining to the registration requirements of instruments of title or instruments affecting any interest in land (such as conveyances, caveats, transmissions, leases etc) amendments to the Land Register and procedures as prescribed under the legislation.

The Division is also tasked with reviewing and formulate changes to Samoa's environmental laws and liaising with the Office of the Attorney General and other Government agencies as well as private law firms in regards to legal proceedings brought by and against the Government and involving this Ministry.

During 2014 to 2015 the Legal Services Division provided the following services to support the work of the Ministry:

Achievements

- Alienation of Freehold Land Applications – 48
- Contracts – 126
- Legislative Reviews – 5
- Legal Advice – 107
- Capacity Building – 3
- MOU/LOA- 21
- Litigation – 8

Analysis

The demand in legal work continues to grow in the Ministry given the establishment of new divisions. This also applies to the amount of contracts executed during this financial year. The highest paid contract was the supply of the Goods and Services for Sogi Playground at NZ\$1,848,860.00 from Playground Centre in New Zealand, inclusive of VAGST.

The legal division attended meetings and trainings in Tokyo Japan, Uruguay, Bangkok and Nairobi Kenya for this period. Reports of all the meetings and trainings were approved by Cabinet.

OUTPUT 14: CSU 2 - CORPORATE SERVICES

Administration and Human Resource

Objectives:

- Strengthen policy advice role on HR matters through Human Resource Coordinators
- Establish appropriate structures to support Public Sector and Government reforms
- Provide an effective Human Resource Management System
- Strengthen Internal Control system
- Good Asset Management
- Strengthen Records Keeping and Management System
- Transportation Pool
- Consistent operation and maintenance services provided for Ministry assets and construction work

The Administration and Human Resource ensures compliance and adherence to the PSC Act 2004, Working Conditions 2009 /2015, Treasury Instructions 2012, Records Management Act 2011 and Public Service and Cabinet Directives, etc

Functions and Tasks;

- Has primary responsibility for managing, assisting and dealing with all employees related matters including such functions as policy administration, recruitment and selection process, working conditions, staff training and development issues, customer services and grievance management policies and procedures. Human Resource plays a critical role in the Ministry as our Ministry success depends on the high level of skills and professionalism of our workforce as they are the most valued resource and are provided with opportunities to participate in a wide range of capacity building and development processes.
- Managing of the front line desk and customer services
- Management of the Ministry's fleet and consistent service and maintenance
- Records keeping and management
- Operation and maintenance work
- Asset Management

Some of the major tasks that were completed within the financial year such as, the construction of the chain link fence for the Fulusou Park and Reserve and Tuanaimato in preparation for the SIDS conference in August 2014, the line wire fence at the Malaefatu Reserve in 2015, installation of new air condition units for the ministry office premises at the Forestry Offices at Vailima, Parks and Reserve Offices, CLAC office at Tamaligi and Forestry Office at Togitogiga notwithstanding other works requested and completed within the year from such Ministry Divisions

Total Number of Employees by Employee Category and Gender:

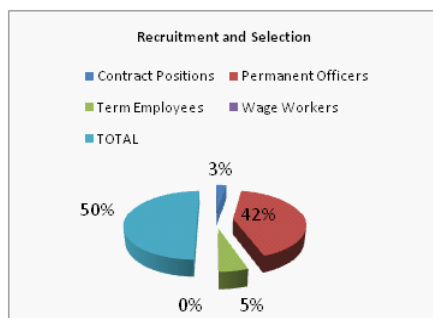
Table 40

Categories	Females	Males	Total
Contract Employees	6	7	13
Officers	231	83	314
Term Employees	6	10	16
Wage Workers	96	4	100
TOTAL	338	104	443

Recruitment and Selection

Table 41

Categories	Total
Contract Positions	4
Permanent Officers	62
Term Employees	8
Wage Workers	0
TOTAL	74



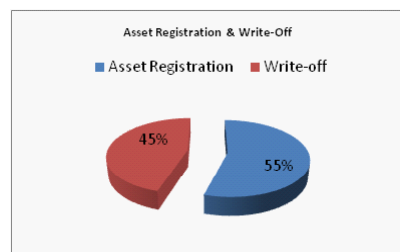
Staff Retention - Table 42

Categories	Total
End Contract	3
Resigned	20
Term Employees	1
Deceased	1
Retirement	6
TOTAL	31



Assets Registration & Write-Off Fy 14.15 - Table 43

Type	Total
Asset Registration	231
Write-off	192



Capacity Building Section

Provide effective and efficient services for HR management and staff development through capacity building, environment education, and public awareness.

The Capacity Building section continues to provide support services to all the Divisions towards achieving its organizational objectives and contributes to the success of the Ministry. These include the provision of services through staff development initiatives, public awareness and environment education for schools and communities, coordination of national awareness events, compilation of corporate documents and reporting.

National workshops and training opportunities

A number of workshops were coordinated with other divisions and projects as well as consultations conducted by the section with stakeholders.

- Community consultation at Letava – Vailima on invasive species
- Keep our Rivers Clean & Healthy Campaign
- A Thematic and Cultural Landscape Analysis on Fagaloa Bay-Uafato Tiavea Conservation Zone
- Waste Minimization and Segregation Awareness

In-Country Training

- Induction Training for new recruits (Savaai/Upolu)
- Pacific Media Assistance Scheme (PACMAS) training
- UNCCD 5th National PRAIS reporting

National Environment Events

- International Ozone Day
- Environment Week 2014
- World Wetlands Day
- World Water & Forest Day
- International Biodiversity Day

Media & Communication

- The Environment Column “Our Environment Our Heritage” page with the Samoa Observer continue to promote and help raise awareness and understanding on environmental concerns and in particular with school children and the general public.
- The MNRE monthly newsletter continues to capture the interest of numerous national and international stakeholders and promote information sharing amongst the divisions on activities. It covers articles on overseas trainings, meetings, national events and more.

Projects

Rio+ Capacity Building Project funded by UNDP UNESCO - World Heritage Project.

Finance Section

The finance section's primary objective is to provide effective and efficient financial services and advice to the Ministry to enable the financial resources of the ministry to be effectively planned, monitored and reported upon.

The finance section has implemented a number of strategies to achieve its above objective which includes:

- Development of Internal Policy on Procurement and Payment to strengthen Internal Control Measures on utilization of financial resources.
- Timely processing of supplies and payments for goods and services required.
- Timely provision of financial reporting to assist in management decision making.

Financial Performance

OUTPUT BUDGET REPORT FOR 2014-2015

1.1 Expenditure:

Summary of Budget for Financial Year Ending 30th June 2015

Annual Approved Budget FY 2014-2015	10,085,714.00
Spending	9,555,228.00
	530,486.00

Third Party Output

Approved Budget for FY 2014-2015	3,300,702.00
Less Spending	3,300,702.00
	-

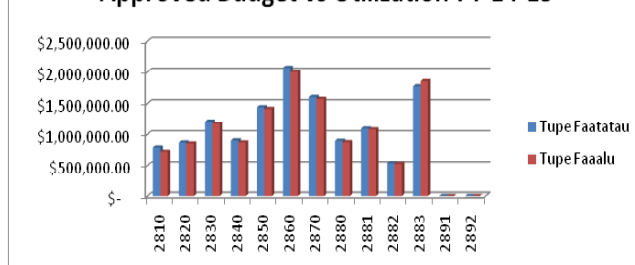
Transactions on behalf of the state

Approved Budget for FY 2014-2015	13,075,598.00
Less Spending	10,989,651.00
	2,085,947.00

Unforeseen

Remaining Balance	2,616,483.00
-------------------	--------------

Approved Budget vs Utilization FY 14-15



1.1.1 Expenditures

The overall utilization % for 2014/2015 is 98%

For most of the Outputs provided by the Ministry (Output 1, 3, 4, 5, 6, 7, 8) the under utilization is mainly caused by the personnel category as a result of some delay in the recruitment and selection process. As such, the vacancies for the ACEO position for the Renewable Energy Division, Principal Officers, for the Forestry and Environment Divisions; and Senior Officers for other Divisions (i.e., Technical, Land Management and Meteorology)

For output 5 and Output 11 (Environment Services & Water Sector), there was an over-expended amount due to unplanned operating costs for preparations and during the SIDS Conference such as; rubbish bins, Waste contracts, Cleaning materials, Upgrade work for the Tunaimato Reserve and Catering.

1. Special Purpose Account - Transactions on Behalf of the State

Membership Fees and Grants

- Low utilization of Transactions on Behalf of the State due to: Payment of membership fees were outstanding due to delay in receiving invoices from the Secretariat Headquarters for example, WMO, SPREP and other Multilateral Environment Agreements. Some of the membership fees the Ministry is still in the process of following up with Focal Points.

2. Government Policies / Initiates:

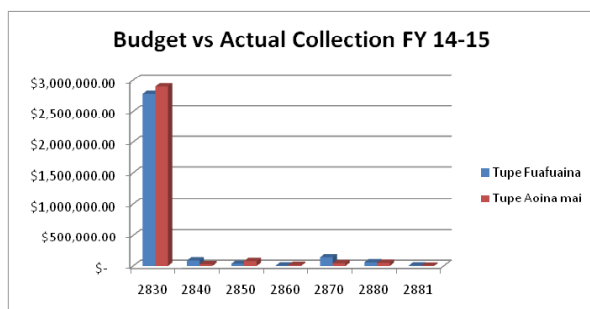
- Other outstanding items noted include the Seawall / rock constructions was under spent due to unpaid retention fees caused by the delays with the approval of the supplementary budget.
- Other major outstanding items are explained as follows:
- Customary Land Advisory Committee (CLAC) - allowances for the Board meetings were not paid as there fewer meetings conducted.
- Water Sector Research & IPES are under spent as these funds are rolled over for Current Financial Year (2015/2016)
- China Climate Change TA-Remaining under spent funds from the storage of Air Conditions + EE lights Bulbs provided for SIDS Conference (eg, Siusega Catholic Hall)
- Renovations for the Post Office is noted under spent due to delays with the contract work.
- Fibre Connections- this allocation was not used, allocated by MoF for SNBH.
- ADB community Sanitation Project – All the planned activities under the Project Work plan completed and these are the remaining funds.

3. Counterpart Costs

- Roads for Land Board Leased Land is under spent due to delays with the tendering process in which some of the work required had to be reviewed (eg, Afiamalu and Tanumalala)

4. Rents and Lease

- Lease of Customary Land for Observation Stations / Towers – Land lease not finalized by the Meteorology.



MINISTRY OF NATURAL RESOURCES AND ENVIRONMENT STATEMENT OF EXPENDITURE BY OUTPUTS FOR FINANCIAL YEAR ENDED 30TH JUNE 2015.

Table 44

2810 - Policy Advice to the Minister of Environ					
Personnel	510565	460890	49675	90%	
Operating	205538	188891	16647	92%	
Capital	-	-	-	-	
Overhead	73059	71067	1991	97%	
Total	\$ 789162	\$ 720849	\$ 68313	91%	
2820 - Ministerial Support					
Personnel	541733	533686	11,595	99%	
Operating	152386	150367	2019	99%	
Capital	-	-	-	-	
Overhead	175340	170562	4779	97%	
Total	\$ 869,459	\$ 854,614	\$ 14,845	98%	
2830 - Land Management					
Personnel	975879	938,159	3,176	100%	
Operating	117500	169,681	319	100%	
Capital	-	-	-	-	
Overhead	116894	113708	3186	97%	
Total	\$ 1,210,273	\$ 1,179131	\$ 31,142	97%	
2840 - Land Technical Services					
Personnel	654665	634235	11,674	98%	
Operating	160482	153395	1,578	99%	
Capital	-	-	-	-	
Overhead	87670	85281	2389	97%	
Total	\$ 904,835	\$ 872,912	\$ 31,924	96%	
2850 - Environment Services					
Personnel	975435	961921	13514	99%	
Operating	305725	296396	9328	97%	
Capital	-	-	-	-	
Overhead	160729	156348	4381	97%	
Total	\$ 1,441,889	\$ 1,414,665	\$ 27,223	98%	
2860 - Forestry Mgmt, Planning, Research Servic					
Personnel	1448931	1444592	4339	100%	
Operating	459799	401019	58780	87%	
Capital	-	-	-	-	
Overhead	160729	156348	4381	97%	
Total	\$ 2,069,459	\$ 2,001,959	\$ 67,500	97%	
2870 - Meteorological, Hydrological, Geological					
Personnel	1039075	1026825	12249	99%	
Operating	391377	376175	15202	96%	
Capital	-	-	-	-	
Overhead	175340	170562	4779	97%	
Total	\$ 1,605,792	\$ 1,573562	\$ 32230	98%	
2880 - Planning & Urban Management Services					
Personnel	582986	575521	7465	99%	
Operating	198700	184266	14434	93%	
Capital	-	-	-	-	
Overhead	116894	113708	3186	97%	
Total	\$ 898579	\$ 873495	\$ 25085	97%	
2881 - Sustainable Water Resources Mgmt					
Personnel	790237	785516	22,553	99%	
Operating	145409	140486	4923	97%	
Capital	-	-	-	-	
Overhead	160729	156348	4381	97%	
Total	\$ 1096375	\$ 1082351	\$ 14024	99%	

2.1 Revenues:

Annual Projected Recoveries for FY 2014-2015	(3,109,964.00)
Actual Recoveries Collected	(1,293,130.00)
Actual Ordinary Revenue Collected	(1,823,484.00)
Total Revenue Collected	(3,116,614.00)
Under/Over collection	(6,650.00)

The ministry has achieved the overall 100% collection of its annual budgeted recoveries, even some of the outputs are under collected for some reasons below for the entire financial year.

- Output 3: There was an over collection in Output 3 (Land Management Division) mainly from the stamp duty that was not budgeted but it was posted under revenues.
- Output 4: Collection also based on the demand from the public. Sale of maps is currently declining as most people have resorted to using Google maps on internet.
- Output 5: There is noted increased under this output (Environment Services) in relation to an increase in landfill dumping fees and also fees for tender documents as most of the rubbish collection 3 years contracts were due during the financial year.
- Output 6: Collection is based on permits and licenses approved and issued by the Forestry Board.
- Output 7, Output 8 and Output 9 were not met due to the decrease in number of survey works conducted, maps provided, permits issued and Development consent applications

2882 - Disaster Management					
	Personnel	326604	322099	4505	99%
	Operating	93874	92512	1,362	99%
	Capital				
	Overhead	116894	113708	3186 -	97%
	Total	\$ 537372	\$ 528318	\$ 9053	98%
2883 - Water Sector Co-ordination Unit					
	Personnel	281008	257097	23911	91%
	Operating	1214282	1007723	206,559	83%
	Capital	160300	134999	25301	84%
	Overhead	116894	113708	3186	97%
	Other		341005	341005	0%
	Total	\$ 1,772,484	\$ 1,854,532	\$ 82,048	105%
2891 - Central Services Unit 1					
	Personnel	213994	207028	6966	97%
	Operating	24323	24381	57	100%
	Capital				
	Overhead	-238,317	- 231,409	-,6908	97%
	Total	\$ 0	\$ 0	\$ 0	0
2892 - Central Services Unit 2					
	Personnel	893169	875860	17309	95%
	Operating	329684	314077	15607	100%
	Capital				
	Overhead	1222853	1189937	32916	100%
	Total	\$ -0	\$ 0	\$ 0	0
	Total Outputs	\$ 13,195678.00	\$ 12,956,387	\$ 478582	98%
Transactions on Behalf of the State					
D08 - World Meteorological Organisation					
	Total	77,323	33,372	43,951	43%
D29 - Union Conservation of Nature, International					
	Total	15,000	1,255	13,745	8%
D30 - SPREP Work Programme					
	Total	100,000	50,874	49,125	50%
D31 - UNFCC					
	Total	3,900	3,900	3,900	0%
D51 - Biological Diversity Convention					
	Total	609	480	130	78%
D54 - Rotterdam Convention					
	Total	6,500	0	6,500	0%
D55 - Migratory Species Convention					
	Total	1,500	476	1,024	31%
D57 - UN Convention to Combat Desertification					
	Total	2,000	0	2,000	0%
D58 - UN Environment Programme (UNEP)					
	Total	2,000	215	1,785	10%
D59 - Stockholm Convention (US1500)					
	Total	2,000		2,000	0%
D60 - Basel Convention (US 1000)					
	Total	3,500	310	3,190	8%
D76 - Commonwealth Forestry Association - London					
	Total	800	0	800	0%
D77 - Asian Pacific Association of Forestry Re					
	Total	200	0	200	0%
D92 - RAMSAR Convention					
	Total	11,818	2,613	9,205	22%
D97 - Heritage (US33)					
	Total	100	100	0	100%
D98 - Waigani Convention (US 1500)					
	Total	5,000	3,859	1,141	77%
E02 - CITES - Trust Fund					
	Total	150	0	150	0%
E03 - IRENA - International Renewable Energy Agency					
	Total	368	368	0	100%
G23 - Rents & Leases					
	Total	798,992	798,992	0	100%
G46 - Customary Land for Observation Stations and Towers					

Total	51,000	0	51,000	0%
J02 - IDA - Infrastructure Asset Mngt Project -				
Total	91,607	91,607	4,693	95%
J45 - PEEP - Phase 2 (Promoting Energy Efficiency in the Pacific)				
Total	120,000	119,864	136	99%
J46 - Roads for Land Board Leased Lands				
Total	500,000	357,636	142,364	71%
L18 - Biodiversity Day				
Total	20,000	16,072	3,928	80%
L19 - World Water Day				
Total	25,000	15,773	9,227	63%
L20 - World Wetlands Day				
Total	25,000	24,858	142	99%
Q01 - VAGST Output Tax				
Total	1,192,468.41	1,323,516	(131,048)	110%
Q19 - Waste Management Service Contracts				
Total	2,108,780	2,108,170	610	99%
Q20 - Land Compensation				
Total	2,000,000	2,000,000	0	100%
Q35 - Land Registration / Leasing Commission				
Total	66,000	60,404	5,596	91%
Q46 - Sludge Maintenance Contract(Upolu Savaii)				
Personnel	-	-	-	0%
Total	180,000	173,987	6,013	96%
Q50 - Seawall/Rockwall Construction				
Total	817,496	592,562	224,934	72%
Q56 - Plumbers Association				
Total	95,000	66,086	28,914	69%
Q57 - National Environment Week				
Total	40,000	39,870	130	99%
Q58 - Customary Land Advisory Commission				
Total	104,094	93299	10,795	89%
R25 - Vailele & Tafaigata				
Total	150,000	139,762	10,238	93%
R55 - Myna Bird Control Operation				
Total	25,000	23,758	1,242	95%
R56 - NPF Land Compensation				
Total	1,200,000	1,200,000	0-	100%
R57 - Water Sector Annual Review				
Total	1,5000	14,549	451	96%
R58 - Water Sector Research Initiative & Impact Assessment				
Total	80,000	16,560	63440	20%
R75 - Institute of Pr				
Total	50,000	39,773	10,227	79%
R76 - Public Toilet Maintenance				
Total	266,000	262,399	3,601	98%
R77- Millennium Developments				
Total	2,500,000	1,141,938	1,358,062	45%
R78 - China Climate				
Total	80,000	44,619	35,381	55%
R79- Renovation of P				
Total	125,000	80,736	44,264	64%
R80- Fibre Connection				
Total	40,000		40,000	0%
Total	13,075,598	10,989,651	2,085,947	84%

IT UNIT

Ministry of Natural Resources and Environment is a continually growing government ministry that is responsible for the sustainable development of Samoa's natural resources, and computer networks are vital for the success of the ministry. The ministry's network infrastructure connects people and supports applications, services and provides access to network resources that keep the ministry operating.

Information Technology is very important in facilitating the efficient and effective communications with in the ministry such as intranet, email and internet.

Services that are done by the IT Unit are;

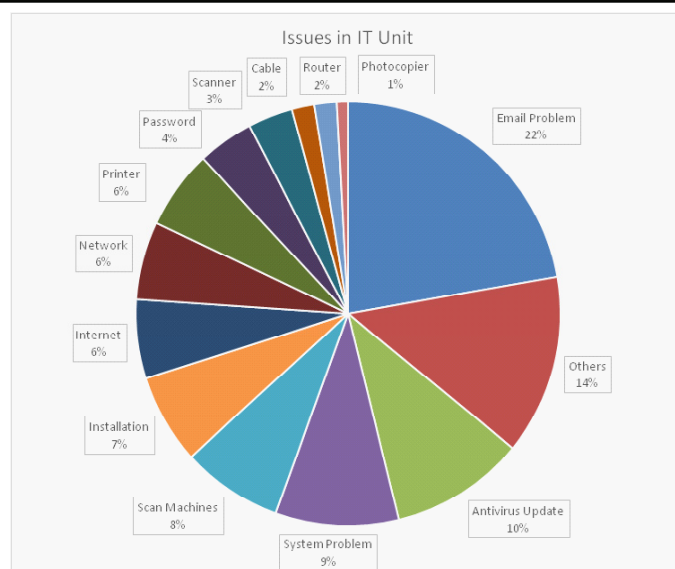
- ☐ Managing of MNRE Network (LAN, WAN, and peer networks) infrastructure and services improved.
- ☐ SNBH connection to 4 stations – National Park and Reserves (Vailima) Forestry (Vailima), and Forestry (Maota & Asau), VLAN to CLAC - Tamaligi, and 1 fibre connection between Meteorology (Mulinuu) and DMO (Faleata);
- ☐ Data/information management and dissemination;
- ☐ Effective and efficient communications systems;
- ☐ Management of hardware, software, and peripheral;
- ☐ Update and managing of the Ministry's website;
- ☐ Database management;
- ☐ Managing Finance One System and the Land Registration System for the Ministry (SOLA);
- ☐ Managing all the Ministry's servers;
- ☐ Once a week backup for servers;
- ☐ Troubleshooting Ministry's computer peripherals;

There has been a marked increase in activities and accessibility within the Ministry since the last review. This coupled with the fast-lane developments in the IT industry has taken the level of responsibility to new levels, with greater degree of urgency, coverage, and governance. This is illustrated in the following

1. Operation and maintenance of 205 computer peripherals;
2. Operation and maintenance of eight (8) IT servers including offsite backup server;

For internet we are currently using two main ISP (Internet Service Providers):

- Main Office at TATTE – CSL through the CPE located at the CSL Point of Presence at MNRE;
- Meteorology (Mulinuu) and DMO (Faleata) – Bluesky through the Fibre;



As shown in the graph above it shows the issues or work that we have done daily during this financial year 14-15, and email is the most common issue that we have, this is due to people needing to change or forgot their email password, could not send email due to limited size of attachment, cable wasn't plug properly to the network port, transfer email to new machines, blocking email from sending spams or set-up new emails for new staff.

The issue 'Others' refer to other works not mentioned in the graph such as, screen fault, PC reboot, Microsoft assistance, coping files, power connections, Delete files, remove old users, map to shared drives, change Date/Time and New users

RIO Project Component 2 – Information Facility

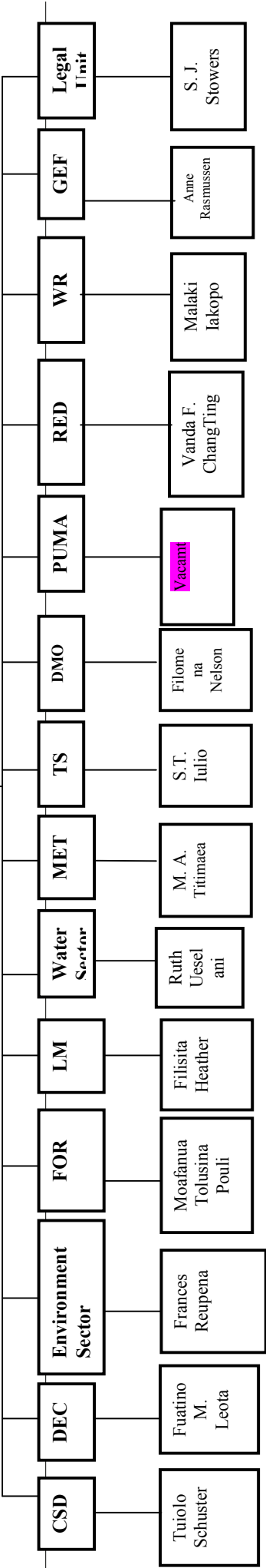
This component focuses particularly on strengthening the capacities of the MNRE as the Focal Points for all three RIO Conventions and as well, the key organisation driving the integration and mainstreaming of environment and sustainable development into all other related sectors.

This project is now just started and the Project Consultant and Principal Data, and Knowledge Management Information Facility is now been advertised.

MINISTRY STRUCTURE

Minister
F L T Dr Faale Tumaalii

Chief Executive Officer
Suluimalo Amataga Penaia



MINISTRY ASSETS (FINANCIAL YEAR 2014-2015)

No. of Assets : 265		740,062.93							
Asset Number	Asset Description	Current Cost	Acquisition Date	C. Code	S. Output	Asset Active or Written Off	Asset Location	Supplier Name	Supplier Reference
NE-001023	Laptop Hp Pavilion	3,477.39	18-06-2014	CE	2860	ACTIVE	Vailima - ICCRIFS	SSAB	IN12176
NE-001189	KYOCERA Printer	22,000.00	17-07-2014	OE	2883	ACTIVE	TATTE	SSAB	IN12931
NE-001190	TOSHIBA Laptop PRO L50 i5	3,999.00	01-07-2014	CE	2883	ACTIVE	TATTE - WRD	SSAB	IN13620
NE-001194	Hp Probook 4540 I7 Laptop	3,913.04	04-12-2014	CE	2883	ACTIVE	TATTE - Water Sector	SSAB	IN17022
NE-001195	Hp Probook 4540 I7 Laptop	3,913.04	04-12-2014	CE	2883	ACTIVE	TATTE - Water Sector	SSAB	IN17022
NE-001196	Floor Standing Partition 10	7,300.00	20-08-2014	FF	2883	ACTIVE	TATTE - WSD	SSAB	IN13990
NE-001211	Canon D30 waterproof	1,899.00	02-10-2014	OE	2850	ACTIVE	TATTE - DEC	Comptech Xtra	3638
NE-001212	Hanging Scale 50kgs SPRING	55.00	03-10-2014	OE	2881	ACTIVE	WRD	Bluebird Lumber	0020420014011
NE-001214	Cots Guns crown thorn starfish	563.28	06-10-2014	PE	2850	ACTIVE	TATTE		
NE-001215	Almond Integra Chair Cream	150.00	09-10-2014	FF	2883	ACTIVE	TATTE	SSAB	IN15326
NE-001216	Plastic Folding Table 8ft (10)	1,800.00	09-10-2014	FF	2883	WRITEOF	TATTE	SSAB	IN15326
NE-001217	Rubbish Bins 100	34,900.00	29-09-2014	PL	2850	ACTIVE	Tafaigata	METEK Co Ltd	000801
NE-001218	Almond Integra Chair Cream	150.00	08-10-2014	FF	2883	ACTIVE	TATTE	SSAB	IN15326
NE-001219	Almond Integra Chair Cream	150.00	08-10-2014	FF	2883	ACTIVE	TATTE	SSAB	IN15326
NE-001220	Almond Integra Chair Cream	150.00	08-10-2014	FF	2883	ACTIVE	TATTE	SSAB	IN15326
NE-001221	Almond Integra Chair Cream	150.00	08-10-2014	FF	2883	ACTIVE	TATTE	SSAB	IN15326
NE-001222	Almond Integra Chair Cream	150.00	08-10-2014	FF	2883	ACTIVE	TATTE	SSAB	IN15326
NE-001223	Almond Integra Chair Cream	150.00	08-10-2014	FF	2883	ACTIVE	TATTE	SSAB	IN15326
NE-001224	Almond Integra Chair Cream	150.00	08-10-2014	FF	2883	ACTIVE	TATTE	SSAB	IN15326
NE-001225	Almond Integra Chair Cream	150.00	08-10-2014	FF	2883	ACTIVE	TATTE	SSAB	IN15326
NE-001226	Almond Integra Chair Cream	150.00	08-10-2014	FF	2883	ACTIVE	TATTE	SSAB	IN15326
NE-001227	Almond Integra Chair Cream	150.00	08-10-2014	FF	2883	ACTIVE	TATTE	SSAB	IN15326
NE-001228	Almond Integra Chair Cream	150.00	08-10-2014	FF	2883	ACTIVE	TATTE	SSAB	IN15326
NE-001229	Almond Integra Chair Cream	150.00	08-10-2014	FF	2883	ACTIVE	TATTE	SSAB	IN15326
NE-001230	Almond Integra Chair Cream	150.00	08-10-2014	FF	2883	ACTIVE	TATTE	SSAB	IN15326
NE-001231	Almond Integra Chair Cream	150.00	08-10-2014	FF	2883	ACTIVE	TATTE	SSAB	IN15326
NE-001232	Almond Integra Chair Cream	150.00	08-10-2014	FF	2883	ACTIVE	TATTE	SSAB	IN15326
NE-001233	Almond Integra Chair Cream	150.00	08-10-2014	FF	2883	ACTIVE	TATTE	SSAB	IN15326

NE-001234	Almond Integra Chair Cream	150.00	08-10-2014	FF	2883	ACTIVE	TATTE	SSAB	IN15326
NE-001235	Almond Integra Chair Cream	150.00	08-10-2014	FF	2883	ACTIVE	TATTE	SSAB	IN15326
NE-001236	Almond Integra Chair Cream	150.00	08-10-2014	FF	2883	ACTIVE	TATTE	SSAB	IN15326
NE-001237	Plastic Folding Table 8ft	180.00	08-10-2014	FF	2883	ACTIVE	TATTE	SSAB	IN15326
NE-001238	Plastic Folding Table 8ft	180.00	08-10-2014	FF	2883	ACTIVE	TATTE	SSAB	IN15326
NE-001239	Plastic Folding Table 8ft	180.00	08-10-2014	FF	2883	ACTIVE	TATTE	SSAB	IN15326
NE-001240	Plastic Folding Table 8ft	180.00	08-10-2014	FF	2883	ACTIVE	TATTE	SSAB	IN15326
NE-001241	Plastic Folding Table 8ft	180.00	08-10-2014	FF	2883	ACTIVE	TATTE	SSAB	IN15326
NE-001242	Plastic Folding Table 8ft	180.00	08-10-2014	FF	2883	ACTIVE	TATTE	SSAB	IN15326
NE-001243	Plastic Folding Table 8ft	180.00	08-10-2014	FF	2883	ACTIVE	TATTE	SSAB	IN15326
NE-001244	Plastic Folding Table 8ft	180.00	08-10-2014	FF	2883	ACTIVE	TATTE	SSAB	IN15326
NE-001245	Plastic Folding Table 8ft	180.00	08-10-2014	FF	2883	ACTIVE	TATTE	SSAB	IN15326
NE-001246	Plastic Folding Table 8ft	180.00	08-10-2014	FF	2883	ACTIVE	TATTE	SSAB	IN15326
NE-001247	Cot Gun crown thorn starfish	563.28	06-10-2014	PE	2850	ACTIVE	TATTE	00081104	
NE-001248	Cot Gun crown thorn starfish	563.28	06-10-2014	PE	2850	ACTIVE	TATTE	00081104	
NE-001249	Cot Gun crown thorn starfish	563.28	06-10-2014	PE	2850	ACTIVE	TATTE	00081104	
NE-001250	Cot Gun crown thorn starfish	563.28	06-10-2014	PE	2850	ACTIVE	TATTE	00081104	
NE-001251	Cot Gun crown thorn starfish	563.28	06-10-2014	PE	2850	ACTIVE	TATTE	AMPTO Pty Ltd	00081104
NE-001252	Cot Gun crown thorn starfish	563.28	06-10-2014	PE	2850	ACTIVE	TATTE	AMPTO Pty Ltd	00081104
NE-001253	Cot Gun crown thorn starfish	563.28	06-10-2014	PE	2850	ACTIVE	TATTE	AMPTO Pty Ltd	00081104
NE-001254	Cot Gun crown thorn starfish	563.28	06-10-2014	PE	2850	ACTIVE	TATTE	AMPTO Pty Ltd	00081104
NE-001255	Cot Gun crown thorn starfish	563.28	06-10-2014	PE	2850	ACTIVE	TATTE	AMPTO Pty Ltd	00081104
NE-001256	HP Prodesk PC - Base	2,999.00	04-11-2014	CE	2870	ACTIVE	METEOROLOGY	SSAB	IN15954
NE-001257	DYNAMIX Safeguard 750VA UPS	350.00	04-11-2014	CE	2870	ACTIVE	METEOROLY	SSAB	IN15954
NE-001258	Cyber 4lay surge power board	48.00	28-10-2014	OE	2880	ACTIVE	TATTE - PUMA	COMPTECH	3658
NE-001283	Batteries Canon Camera	9,000.00	20-10-2014	OE	2850	ACTIVE	TATTE - DEC	Comptech Xtra	3654
NE-001284	Lowara Pump 1 x BGR100	1,090.00	15-10-2014	HE	2810	ACTIVE	Minister Office	Navigator Enterprises	00010131
NE-001285	Generate electricity-Vaiaata Savaii	990.00	25-11-2014	PE	2850	ACTIVE	DEC	SMI	0010050063593
NE-001286	MNRE02;;mistubishi d/cab hilux	60,000.00	01-01-1998	MV	2880	WRITEOF	nauer /w/shop	unknown	
NE-001287	Hp Probook 4540 I7 Laptop	3,913.04	04-12-2014	CE	2883	ACTIVE	Water Sector	SSAB	IN17022
NE-001288	Hp Probook 4540 I7 Laptop	3,913.04	04-12-2014	CE	2883	ACTIVE	Water Sector	SSAB	IN17022
NE-001289	3drawer filing cabinet	494.00	16-12-2014	FF	9094	ACTIVE	TATTE - DEC	MAXKAR	87368
NE-001290	1TB Hard Drive Touro	350.00	13-01-2015	EX	2880	ACTIVE	TATTE	MAXKAR	87539
NE-001291	Apacer 32GB Micro SD SDHC Card	140.00	10-12-2014	EX	9094	ACTIVE	Land Management	ISLAND ROCK	8858

NE-001292	Apacer 32GB Flashdrive	70.00	10-12-2014	EX	9094	ACTIVE	Land Management	ISLAND ROCK	8858
NE-001293	Samsung Galaxy Tab4 10.1	1,599.00	10-12-2014	OE	9094	ACTIVE	Land Management	ISLAND ROCK	8858
NE-001294	Canon Digital Video Camera	1,650.00	12-12-2014	OE	9094	ACTIVE	Land Management	ISLAND ROCK	8831
NE-001295	SONY MP3 Stereo voice recorder	320.00	12-12-2014	OE	9094	ACTIVE	Land Management	ISLAND ROCK	8831
NE-001296	Epson EB S-18 SVGA Projector	2,000.00	12-12-2014	OE	9094	ACTIVE	Land Management	ISLAND ROCK	8831
NE-001297	Projector Screen	490.00	12-12-2014	OE	9094	ACTIVE	Land Management	ISLAND ROCK	8831
NE-001298	3 Apacer 32GB Flashdrive	210.00	12-12-2014	EX	9094	ACTIVE	Land Management	ISLAND ROCK	8831
NE-001299	1TB 2.5" USB 3.0 External HDD	299.00	12-12-2014	EX	9094	ACTIVE	Land Management	ISLAND ROCK	8831
NE-001300	Behringer Xenyx Input Mixer	1,500.00	12-12-2014	OE	9094	ACTIVE	Land Management	ISLAND ROCK	8831
NE-001301	Active Speaker with MP3 Player	600.00	12-12-2014	OE	9094	ACTIVE	Land Management	ISLAND ROCK	8831
NE-001302	Active Speaker with MP3 Player	600.00	12-12-2014	OE	9094	ACTIVE	Land Management	ISLAND ROCK	8831
NE-001303	Speaker Stand	200.00	12-12-2014	OE	9094	ACTIVE	Land Management	ISLAND ROCK	8831
NE-001304	Speaker Stand	200.00	12-12-2014	OE	9094	ACTIVE	Land Management	ISLAND ROCK	8831
NE-001305	Wireless Microphone	200.00	12-12-2014	OE	9094	ACTIVE	Land Management	ISLAND ROCK	8831
NE-001306	Wireless Microphone	200.00	12-12-2014	OE	9094	ACTIVE	Land Management	ISLAND ROCK	8831
NE-001307	Xlr Mic cables 30ft EWILCMS/30	2,000.00	12-12-2014	OE	9094	ACTIVE	Land Management	ISLAND ROCK	8831
NE-001308	Audio Lead stereo Mono Jack	1,000.00	12-12-2014	OE	9094	ACTIVE	Land Management	ISLAND ROCK	8831
NE-001310	HP Pavilion i3 PC LCD Monitor	2,499.00	21-01-2015	CE	2880	ACTIVE	TATTE - PUMA	Island Rock	9612
NE-001311	Samsung Galaxy Tab3	1,999.00	06-12-2014	CE	9094	ACTIVE	Forestry Vailima	ISLAND ROCK	6596
NE-001312	Samsung Galaxy Tab3	1,999.00	06-12-2014	CE	9094	ACTIVE	Forestry Vailima	ISLAND ROCK	6596
NE-001313	Dura Tank	368.00	03-02-2015	PE	9094	ACTIVE	DEC	MOTORS DISTRIBUTOR	18133
NE-001314	Connector/Fuel Hose	35.00	03-02-2015	PE	9094	ACTIVE	DEC	MOTORS DISTRIBUTOR	18133
NE-001315	HP 20" LED Monitor	1,749.50	03-03-2015	CE	2850	ACTIVE	TATTE - DEC	ISLAND ROCK	10207
NE-001316	HP Pavilion 500-238D PC	1,749.50	03-03-2015	CE	2850	ACTIVE	TATTE - DEC	ISLAND ROCK	10207
NE-001328	Waterproof Camera Panasonic	1,500.00	20-03-2015	OE	2850	ACTIVE	TATTE - DEC	ISLAND ROCK	10319
NE-001329	HP Desktop	4,500.00	06-02-2015	CE	2883	ACTIVE	Water Sector	SSAB	IN18687
NE-001330	HP Desktop	4,500.00	06-02-2015	CE	2883	ACTIVE	Water Sector	SSAB	IN18687
NE-001331	HP Laptop Probook470	4,500.00	06-02-2015	CE	2883	ACTIVE	Water Sector	SSAB	IN18687
NE-001332	Printer Ecosystem M-6526	4,450.00	30-03-2015	OE	9094	ACTIVE	Land Management	SSAB	IN20329
NE-001333	HP Laptop Pro-book	3,800.00	26-03-2015	CE	9094	ACTIVE	Land Management	SSAB	IN20241
NE-001334	2TB seagate external HDD	480.00	02-04-2015	CE	9094	ACTIVE	Meteorology - Mullinu	MAXKAR	88108
NE-001335	MNRE 64	89,000.00	30-03-2015	MV	9094	ACTIVE	TATTE - SMSMCL	ASCO MOTORS	A06746
NE-001338	Lenovo Laptop	1,299.00	14-04-2015	CE	2891	ACTIVE	TATTE - Legal Services	ISLAND ROCK	10640
NE-001339	4GB DDR3 RAM LAPTOP	335.00	21-04-2015	CE	9094	ACTIVE	Vailima - ICCRIFS	COMPTech	101971

NE-001340	Petrol Generator 1KVA	1,400.00	29-04-2015	PE	2850	ACTIVE	Tafaigata	ACE HARDWARE	0012100033025
NE-001348	HP CLJ M775f Pro 700 MFP Printer	22,700.00	29-04-2015	OE	9092	ACTIVE	PUMA - Sanitation	ISLAND ROCK	10735
NE-001420	Epson EB-S120 Projector	1,725.00	25-05-2015	OE	9094	ACTIVE	TATTE	ISLAND ROCK	11073
NE-001421	Projector Screen (70"x70")	490.00	25-05-2015	OE	9094	ACTIVE	TATTE	ISLAND ROCK	11073
NE-001422	Projector Cwelling Mount 20kg	190.00	25-05-2015	OE	9094	ACTIVE	TATTE	ISLAND ROCK	11073
NE-001423	Epson Wireless Lan Unit (ELPA07)	450.00	25-05-2015	EX	9094	ACTIVE	TATTE	ISLAND ROCK	11073
NE-001424	Laminator A3	1,450.00	25-05-2015	OE	9094	ACTIVE	TATTE	ISLAND ROCK	11073
NE-001425	Steel Cabinet Shelves	999.00	25-05-2015	FF	9094	ACTIVE	TATTE	ISLAND ROCK	11073
NE-001426	Steel Cabinet Shelves	999.00	25-05-2015	FF	9094	ACTIVE	TATTE	ISLAND ROCK	11073
NE-001427	Steel Cabinet Shelves	999.00	25-05-2015	FF	9094	ACTIVE	TATTE	ISLAND ROCK	11073
NE-001428	Steel Cabinet Shelve	999.00	25-05-2015	FF	9094	ACTIVE	TATTE	ISLAND ROCK	10073
NE-001429	Paper Puncher	950.00	25-05-2015	OE	9094	ACTIVE	TATTE	ISLAND ROCK	11073
NE-001430	Binder	1,460.00	25-05-2015	OE	9094	ACTIVE	TATTE	ISLAND ROCK	11073
NE-001431	MNRE70	111,500.00	22-05-2015	MV	9094	ACTIVE	DMO	FORD Company	FS15031
NE-001432	Lounge Suite	1,463.30	29-05-2015	FF	9094	ACTIVE	TATTE - PUMA	ISLAND ROCK	11114
NE-001433	Lounge Suite	1,463.30	29-05-2015	FF	9094	ACTIVE	TATTE - PUMA	ISLAND ROCK	11114
NE-001434	Lounge Suite	1,463.30	29-05-2015	FF	9094	ACTIVE	TATTE - PUMA	ISLAND ROCK	11114
NE-001435	Motorise Pump Onga Blazemaster	2,618.26	08-05-2015	PE	2883	ACTIVE	Vaitele - Met Office	Navigator Enterprises	99452
NE-001436	Computer Set Dell Intel Pentium	2,998.00	05-06-2015	CE	2880	ACTIVE	PUMA	COMPTech XTRA	3834
NE-001437	Laptop Dell	3,990.00	05-06-2015	CE	2880	ACTIVE	TATTE - PUMA	COMPTech XTRA	3833
NE-001438	Computer Set Dell	2,998.00	19-05-2015	CE	2880	ACTIVE	TATTE - PUMA	COMPTech XTRA	3820
NE-001439	Samsung MultiXpress Copier	22,700.00	28-05-2015	OE	2830	ACTIVE	Land Management	Island Rock	11076
NE-001440	EC/Turbidity	3,400.00	19-12-2014	PE	2883	ACTIVE	TATTE	SSAB	IN17457
NE-001441	DISSOLVED OXYGEN	1,150.00	19-12-2014	PE	2883	ACTIVE	TATTE	SSAB	IN17457
NE-001442	Ph/ORP	1,950.00	19-12-2014	PE	2883	ACTIVE	TATTE	SSAB	IN17457
NE-001443	Ammonium ISE HI 7609829-10	2,340.00	19-12-2014	PE	2883	ACTIVE	TATTE	SSAB	IN17457
NE-001444	CHLORIDE ISE HI 7609829-11	2,340.00	19-12-2014	PE	2883	ACTIVE	TATTE	SSAB	IN17457
NE-001445	NITRATE ISE HI 7609829-12	2,340.00	19-12-2014	PE	2883	ACTIVE	TATTE	SSAB	IN17457
NE-001446	CT2X 30 PS 316 STAINLESS	6,300.00	19-12-2014	PE	2883	ACTIVE	TATTE	SSAB	IN17456
NE-001447	CT2X 30 PS 316 STAINLESS	6,300.00	19-12-2014	PE	2883	ACTIVE	TATTE	SSAB	IN17456
NE-001448	CT2X 30 PS 316 STAINLESS	6,300.00	19-12-2014	PE	2883	ACTIVE	TATTE	SSAB	IN17456
NE-001449	Buro Swivel Chair	886.78	09-06-2015	FF	9092	ACTIVE	TATTE	Business System	17022
NE-001450	Buro Swivel Chair	886.78	09-06-2015	FF	9092	ACTIVE	TATTE	Business System	17022
NE-001451	Buro Swivel Chair	886.78	09-06-2015	FF	9092	ACTIVE	TATTE	Business System	17022

NE-001452	Buro Swivel Chair	886.78	09-06-2015	FF	9092	ACTIVE	TATTE	Business System	17022
NE-001453	Buro Swivel Chair	886.78	09-06-2015	FF	9092	ACTIVE	TATTE	Business System	17022
NE-001454	Buro Swivel Chair	886.78	09-06-2015	FF	9092	ACTIVE	TATTE	Business System	17022
NE-001455	Buro Swivel Chair	886.78	09-06-2015	FF	9092	ACTIVE	TATTE	Business System	17022
NE-001456	Buro Swivel Chair	886.78	09-06-2015	FF	9092	ACTIVE	TATTE	Business System	17022
NE-001457	Buro Swivel Chair	886.78	09-06-2015	FF	9092	ACTIVE	TATTE	Business System	17022
NE-001458	Buro Swivel Chair	886.78	09-06-2015	FF	9092	ACTIVE	TATTE	Business System	17022
NE-001459	DYNAMIX 650VA UPS	343.85	10-06-2015	CE	2850	ACTIVE	TATTE - DEC	SSAB	IN22389
NE-001460	4Drawer Filing Cabinet Europlan	862.50	10-06-2015	FF	2850	ACTIVE	TATTE - DEC	SSAB	IN22389
NE-001461	4Drawer Filing Cabinet Europlan	862.50	10-06-2015	FF	2850	ACTIVE	TATTE - DEC	SSAB	IN22389
NE-001462	SEAGATE 1TB PORTABLE HDD	458.84	10-06-2015	EX	2850	ACTIVE	TATTE - DEC	SSAB	IN22389
NE-001463	SEAGATE 2TB BACKUP PORTABLE	576.99	10-06-2015	EX	9092	ACTIVE	TATTE - DEC	Business System Ltd	17183
NE-001464	SEAGATE 2TB BACKUP PORTABLE	576.99	10-06-2015	EX	9092	ACTIVE	TATTE - DEC	Business System Ltd	17183
NE-001465	Arc Weld	1,696.10	10-03-2015	PE	2881	ACTIVE	TATTE - WRD	BOC Gases	472446
NE-001466	JIGSAW	399.00	17-06-2015	PE	2892	ACTIVE	SOGI - CAR PARK	LOBER INDUSTRIES	19178
NE-001467	CIRCULAR SAW 9 1/4 2100W	1,199.00	17-06-2015	PE	2892	ACTIVE	SOGI - CAR PARK	LOBER INDUSTRIES	19178
NE-001468	DRILL 10MM	319.00	17-06-2015	PE	2892	ACTIVE	SOGI - CAR PARK	LOBER INDUSTRIES	19178/
NE-001469	KARCHER VACCUM	650.00	17-06-2015	PE	9092	ACTIVE	SOGI - CAR PARK	LE WELL	54902
NE-001470	PRESSURE WASHER	3,500.00	17-06-2015	PE	9092	ACTIVE	SOGI - CAR PARK	LE WELL	54902
NE-001471	CANON Digital Camera	650.00	11-06-2015	OE	9092	ACTIVE	Minister Office	ABM	739046
NE-001472	HP Pro Book 450 G2 i5 Laptop	3,100.00	17-06-2015	CE	9094	ACTIVE	TATTE - SMSMCL	SSAB	IN22763
NE-001473	HP Pro Book 450 G2 i5 Laptop	3,100.00	17-06-2015	CE	9094	ACTIVE	TATTE - SMSMCL	SSAB	IN22763
NE-001474	HP Pro Book 450 G2 i5 Laptop	3,100.00	17-06-2015	CE	9094	ACTIVE	TATTE - SMSMCL	SSAB	IN22763
NE-001475	HP Pro Book 450 G2 i5 Laptop	3,100.00	17-06-2015	CE	9094	ACTIVE	TATTE - SMSMCL	SSAB	IN22763
NE-001477	Panasonic - Electronic Board	5,850.00	15-06-2015	OE	9092	ACTIVE	TATTE - PUMA	ISLAND ROCK	11181
NE-001478	CT2X 30 PS 316 STAINLESS	6,300.00	17-06-2015	PE	2883	ACTIVE	Water Resources	SSAB	IN22688
NE-001479	CT2X 30 PS 316 STAINLESS	6,300.00	17-06-2015	PE	2883	ACTIVE	Water Resources	SSAB	IN22688
NE-001480	CT2X 30 PS 316 STAINLESS	6,300.00	17-06-2015	PE	2883	ACTIVE	Water Resources	SSAB	IN22688
NE-001481	CT2X 30 PS 316 STAINLESS	6,300.00	17-06-2015	PE	2883	ACTIVE	Water Resources	SSAB	IN22688
NE-001482	I5 Desktop PC Computer Set	4,250.00	03-06-2015	CE	9092	ACTIVE	TATTE - PUMA	Business System	17042
NE-001483	TP LINK 24 PORT SWITCH	215.00	08-06-2015	OE	2870	ACTIVE	Mulinuu - Meteorology	SSAB	IN22280
NE-001484	Cupboard 2doors	1,375.00	15-06-2015	FF	9092	ACTIVE	TATTE - PUMA	MAXKAR	70686
NE-001485	Cupboard 2doors	1,375.00	15-06-2015	FF	9092	ACTIVE	TATTE - PUMA	MAZKAR	70686
NE-001486	MINRE 05	90,000.00	16-06-2015	MV	2881	ACTIVE	Water Resources	ASCO MOTORS	A06811

NE-001487	CANON ESO 1200D CAMERA	2,610.00	17-06-2015	OE	2883	ACTIVE	TATTE - Water Sector	SSAB	IN22732
NE-001488	CANON ESO 1200D CAMERA	2,610.00	17-06-2015	OE	2883	ACTIVE	TATTE - CSD	SSAB	IN22732
NE-001489	USB - HDMI	325.00	05-06-2015	CE	2883	ACTIVE	Water Resources	ISLAND ROCK	11143
NE-001490	DIGITUS UPS 650V	290.00	09-04-2015	CE	2883	ACTIVE	TATTE - Legal Service	Business System	16226
NE-001491	Gazebo	4,199.00	29-05-2015	PE	9092	ACTIVE	Water Resources	SSAB	IN22074
NE-001492	Ph Alcatel T-22 desktop phone	90.60	22-05-2015	OE	2883	ACTIVE	TATTE - Water Sector	Lesa Telephone S.	70782
NE-001493	Chair B11	35.00	17-06-2015	FF	2860	ACTIVE	TATTE - Forestry	SMI	0010060005895
NE-001494	Chair B11	35.00	17-06-2015	FF	2860	ACTIVE	TATTE - Forestry	SMI	0010060005895
NE-001495	Chair B11	35.00	17-06-2015	FF	2860	ACTIVE	TATTE - Forestry	SMI	0010060005895
NE-001496	Chair B11	35.00	17-06-2015	FF	2860	ACTIVE	TATTE - Forestry	SMI	0010060005895
NE-001497	Chair B11	35.00	17-06-2015	FF	2860	ACTIVE	TATTE - Forestry	SMI	0010060005895
NE-001498	Chair B11	35.00	17-06-2015	FF	2860	ACTIVE	TATTE - Forestry	SMI	0010060005895
NE-001499	Chair B11	35.00	17-06-2015	FF	2860	ACTIVE	TATTE - Forestry	SMI	0010060005895
NE-001500	Chair B11	35.00	17-06-2015	FF	2860	ACTIVE	TATTE - Forestry	SMI	0010060005895
NE-001501	Chair B11	35.00	17-06-2015	FF	2860	ACTIVE	TATTE - Forestry	SMI	0010060005895
NE-001502	Chair B11	35.00	17-06-2015	FF	2860	ACTIVE	TATTE - Forestry	SMI	0010060005895
NE-001503	Chair B11	35.00	17-06-2015	FF	2860	ACTIVE	TATTE - Forestry	SMI	0010060005895
NE-001504	Chair B11	35.00	17-06-2015	FF	2860	ACTIVE	TATTE - Forestry	SMI	0010060005895
NE-001505	Chair B11	35.00	17-06-2015	FF	2860	ACTIVE	TATTE - Forestry	SMI	0010060005895
NE-001506	Chair B11	35.00	17-06-2015	FF	2860	ACTIVE	TATTE - Forestry	SMI	0010060005895
NE-001507	Chair B11	35.00	17-06-2015	FF	2860	ACTIVE	TATTE - Forestry	SMI	0010060005895
NE-001508	Chair B11	35.00	17-06-2015	FF	2860	ACTIVE	TATTE - Forestry	SMI	0010060005895
NE-001509	Chair B11	35.00	17-06-2015	FF	2860	ACTIVE	TATTE - Forestry	SMI	0010060005895
NE-001510	Chair B11	35.00	17-06-2015	FF	2860	ACTIVE	TATTE - Forestry	SMI	0010060005895
NE-001511	Chair B11	35.00	17-06-2015	FF	2860	ACTIVE	TATTE - Forestry	SMI	0010060005895
NE-001512	Chair B11	35.00	17-06-2015	FF	2860	ACTIVE	TATTE - Forestry	SMI	0010060005895
NE-001513	Chair B11	35.00	17-06-2015	FF	2860	ACTIVE	TATTE - Forestry	SMI	0010060005895
NE-001514	Chair B11	35.00	17-06-2015	FF	2860	ACTIVE	TATTE - Forestry	SMI	0010060005895
NE-001515	Chair B11	35.00	17-06-2015	FF	2860	ACTIVE	TATTE - Forestry	SMI	0010060005895
NE-001516	Chair B11	35.00	17-06-2015	FF	2860	ACTIVE	TATTE - Forestry	SMI	0010060005895
NE-001517	Chair B11	35.00	17-06-2015	FF	2860	ACTIVE	TATTE - Forestry	SMI	0010060005895
NE-001518	Chair B11	35.00	17-06-2015	FF	2860	ACTIVE	TATTE - Forestry	SMI	0010060005895
NE-001519	Chair B11	35.00	17-06-2015	FF	2860	ACTIVE	TATTE - Forestry	SMI	0010060005895
NE-001520	Chair B11	35.00	17-06-2015	FF	2860	ACTIVE	TATTE - Forestry	SMI	0010060005895

NE-001555	Folding Table	180.00	17-06-2015	FF	2860	ACTIVE	TATTE - Forestry	SMI	0010060005895
NE-001556	Folding Table	180.00	17-06-2015	FF	2860	ACTIVE	TATTE - Forestry	SMI	0010060005895
NE-001557	Folding Table	180.00	17-06-2015	FF	2860	ACTIVE	TATTE - Forestry	SMI	0010060005895
NE-001558	Folding Table	180.00	17-06-2015	FF	2860	ACTIVE	TATTE - Forestry	SMI	0010060005895
NE-001559	Folding Table	180.00	17-06-2015	FF	2860	ACTIVE	TATTE - Forestry	SMI	0010060005895
NE-001560	Folding Table	180.00	17-06-2015	FF	2860	ACTIVE	TATTE - Forestry	SMI	0010060005895
NE-001561	Folding Table	180.00	17-06-2015	FF	2860	ACTIVE	TATTE - Forestry	SMI	0010060005895
NE-001562	Folding Table	180.00	17-06-2015	FF	2860	ACTIVE	TATTE - Forestry	SMI	0010060005895
NE-001563	WATER TANK 5,000litres	3,990.00	17-06-2015	PE	2860	ACTIVE	FORESTRY	SMI	0010060005895
NE-001564	SHARP Multifunction Printer	7,999.00	16-06-2015	OE	9094	ACTIVE	KVA Office	MAXKAR	88262
NE-001565	Canon EOS1200D	3,000.00	17-06-2015	OE	9092	ACTIVE	TATTE - PUMA	ISLAND ROCK	11238
NE-001589	Whiteboard Lacqured 900*1200	316.25	10-06-2015	OE	2850	ACTIVE	TATTE - DEC	SSAB	IN22389
NE-001590	Plastic Folding Chair	74.75	10-06-2015	FF	2850	ACTIVE	TATTE - DEC	SSAB	IN22389
NE-001591	Plastic Folding Chair	74.75	10-06-2015	FF	2850	ACTIVE	TATTE - DEC	SSAB	IN22389
NE-001592	Plastic Folding Chair	74.75	10-06-2015	FF	2850	ACTIVE	TATTE - DEC	SSAB	IN22389
NE-001593	Plastic Folding Chair	74.75	10-06-2015	FF	2850	ACTIVE	TATTE - DEC	SSAB	IN22389
NE-001594	Plastic Folding Chair	74.75	10-06-2015	FF	2850	ACTIVE	TATTE - DEC	SSAB	IN22389
NE-001595	Plastic Folding Chair	74.75	10-06-2015	FF	2850	ACTIVE	TATTE - DEC	SSAB	IN22389
NE-001596	Plastic Folding Table	207.00	10-06-2015	FF	2850	ACTIVE	TATTE - DEC	SSAB	IN22389
NE-001597	Plastic Folding Table	207.00	10-06-2015	FF	2850	ACTIVE	TATTE - DEC	SSAB	IN22389
NE-001598	Plastic Folding Table	207.00	10-06-2015	FF	2850	ACTIVE	TATTE - DEC	SSAB	IN22389
NE-001629	Portable Radio	1,172.75	08-10-2014	CM	2882	ACTIVE	DMO - Tuanaimato	MCS Digital Ltd	
NE-001630	Portable Radio	1,172.75	08-10-2014	CM	2882	ACTIVE	DMO - Tuanaimato	MCS Digital Ltd	
NE-001631	Portable Radio	1,172.75	08-10-2014	CM	2882	ACTIVE	DMO - Tuanaimato	MCS Digital Ltd	
NE-001632	Portable Radio	1,172.75	08-10-2014	CM	2882	ACTIVE	DMO - Tuanaimato	MCS Digital Ltd	
NE-001633	Portable Radio	1,172.75	08-10-2014	CM	2882	ACTIVE	DMO - Tuanaimato	MCS Digital Ltd	
NE-001634	Portable Radio	1,172.75	08-10-2014	CM	2882	ACTIVE	DMO - Tuanaimato	MCS Digital Ltd	
NE-001635	Portable Radio	1,172.75	08-10-2014	CM	2882	ACTIVE	DMO - Tuanaimato	MCS Digital Ltd	
NE-001636	Portable Radio	1,172.75	08-10-2014	CM	2882	ACTIVE	DMO - Tuanaimato	MCS Digital	
NE-001637	Portable Radio	1,172.75	08-10-2014	CM	2882	ACTIVE	DMO - Tuanaimato	MCS Digital Ltd	
NE-001638	Portable Radio	1,172.75	08-10-2014	CM	2882	ACTIVE	DMO - Tuanaimato	MCS Digital Ltd	

List of Projects

MOF CODES	ENVIRONMENT SECTOR	DEVELOPMENT PARTNER	DIVISION	START DATE	END DATE	FUND	PROJECT DESCRIPTION
0441-20	LDCF Project - Economy Wide Integration of Climate Change, DRR/DRM to reduce Climate Vulnerability of Communities in Samoa	GEF	PUMA Water Resources DMO Meteorology GEF	2015	2020	USD14M	Strategic integration of climate change adaptation and DRM in national policy frameworks and development planning; Enhance resilience of communities as first responders of climate change-induced hazards; Monitoring and Evaluation and Knowledge Management
0425-20	SMSMCL - Strengthening Multi Sector Management of Critical Landscapes	GEF-SOCF	Land Management	2014	2019	USD4.7M	To reduce pressures on natural resources from competing land uses in the wider landscape by reducing all causes of land degradation; promoting conservation practices, reducing GHG emissions, Enhancing land productivity to strengthen sustainable livelihoods and protecting integrity of ecosystem services.
0380-20	Enhancing Resilience of Coastal Communities to Climate Change - Adaptation Fund	GEF/UNDP	PUMA	2013	2017	USD8.05M	Reduce vulnerability (and variability) to adverse impacts of climate change at local/national levels
0433-89	Enhancing Climate Resilience of Coastal Resources & Communities	World Bank	PUMA	2014	2018	USD14.6M	To support coastal communities to become more resilient to climate variability and change
0438-13	Apia Waterfront Development	NZMFAT	PUMA	2015	2017	SAT1.06M	To formulate a Waterfront Development Plan to guide the development of the Apia Waterfront
MOF TO CONFIRM	Pacific Resilience Program	World Bank	DMO	2016	2020	USD13.79M	To strengthen early warning, resilient investments and financial protection of Samoa
MOF TO CONFIRM	Community Sanitation	ADB/JAPAN	PUMA	2013	2017	USD2.1M	To upgrade septic tank systems of selected regions in Upolu in order to improve health & environment.
0328-20	Integrating Climate Change, Forestry ICCRIFS - Integrated Climate Change Risks into the Forestry Sector, NAPAS	GEF	FORESTY	2012	2015	USD2.4M	The project aims to increase the resilience and adaptive capacity of Samoa's forest areas and dependent communities to the threats of climate change.
0304-44	Forestry and Protected Areas Management (FPAM)	GEF/FAO	FORESTY	2012	2017	USD1.4M	Strengthen forestry and protected areas management
0435-20	Capacity Building for Mainstreaming and Implementing RIO Conventions in Samoa	GEF/UNDP	CSD	2014	2017	USD1M	Mainstreaming and promotion of the Rio Conventions into national development plans by strengthening of legislative and regulatory instruments.
MOF TO CONFIRM	Severe Weather Forecasting and Disaster Risk Reduction (SWFDP) - Technical Cooperation	WMO	MET	2009	ongoing		Cascade forecasting - Global, Regional, National centers
MOF TO CONFIRM	Coping with Climate Change in the Pacific (CCCPIR)	GIZ	MET	2012	ongoing		Mainstreaming Climate Change in the Education, and Fisheries
0408-99	Climate and Ocean Support Program for the Pacific (COSPPac)	AUS DFAT	MET	2012	2016	AUD100,000	To generate seasonal predictions and to apply these to the significant challenges of adapting to climate change and to seasonal climate anomalies such as rainfall extremes - PICs
MOF TO CONFIRM	Samoa - China Seismic Network (SCSN)	CHINA	MET	2009	2014		Data Acquisition and Early Warning - prediction of Earthquakes and Tsunamis
0367-14	Ozone Project POP Monitoring of Activities	UNEP	MET	2004	ongoing		Phasing out the ODS in the Refrigeration and Air conditioning sector
0381-99	Two Samoas Project	NOAA CRCP International Coral Reef Conservation Cooperative Agreements	DEC	2013	2015		To progress the Two Samoas efforts and actions to manage shared resources as a single archipelago
MOF TO CONFIRM	Shibushi	JICA	DEC	2011	2016		To tackle waste problems in Pacific Island countries which have potential to cause negative impacts on national development activities, including tourism and trade, food supplies, public health and the environment
MOF TO CONFIRM	Waste Project	JICA	DEC	2013	2015		As partnership with the J-PRISM project, this project will focus more on primary treatment of organic wastes through implementation of home composting
0367-14	Invasive Species Project	UNEP	DEC	2012	2016		This project contributes for the implementations of Guidelines for Invasive Species in the region and NBSAP. The guidelines mainly is to raise awareness on invasive species, establishing baseline information on its distribution and actions to prevent its spread.
0385-22	NBSAP 7 5th National Report to the CBD Project	UNEP	DEC	2012	2014		To enable Samoa to reise its National Biodiversity Strategy and Action Plans (NBSAPs) and to develop the Fifth National Report to the Convention on Biological Diversity (CBD)

