

INSIDE THIS ISSUE:

**NZ Civil Defense
Minister visits DMO**
Pg2

**CDCRM Facilitators
training workshop**
Pg3

**Pacific Risk Tool for
Resilience (PARTneR)
Project**
Pg4

**DRM Sector
workshops in photos**
Pg5

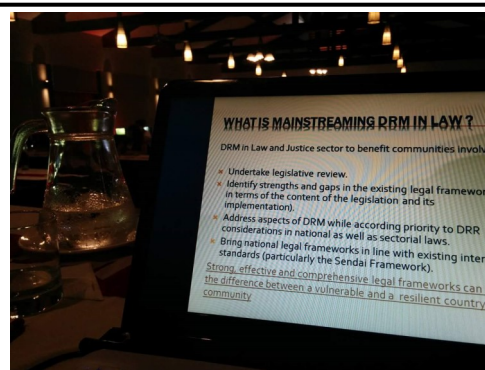
*More articles from the team In-
side...*

CONTACT DETAILS

Disaster Management Office
Apia, Samoa
TATTE Tel: (685) 67200
Tuana'imato Tel: (685) 997 or
27307
Mulimuu Tel: (685) 20855
Ext. 418, 419
Fax: (685) 23176
Email: dmosamoa@gmail.com

Disaster Risk Management Workshops

Apia, Samoa, 22 August – 8 September 2016



DRM Sector Workshops

A series of Disaster Risk Management sector workshops were held at Tanoa Tusitala Hotel in Apia during 23 August to 8 September, attended by 122 participants from across Samoa's fourteen sectors. The two day workshops involved collaboration between sectors, reflecting agreed principles of mainstreaming disaster risk management. Participants included representatives from government, civil society and the private sector. The workshops were funded from the Secretariat of the Pacific Community (SPC) and the European Union (EU).

Workshops were delivered in three segments. The first segment was led by Kiwi Consult's Barbara Bedeschi and ACEO Filomena Nelson. The first day of the workshop focused on introducing DRM concepts, including mainstreaming DRM, with opportunities for identifying entry points to address DRM challenges. The second day included a session, led by Filomena Nelson and delivered a practical, desk-top, simulation exercise to test response agency planning. A final segment on the second day was facilitated by Karen Medica, DFAT's DRM Adviser who highlighted the importance of monitoring DRM with an emphasis on mainstreaming along with an introduction to a monitoring tool developed by the DMO.

All DMO staff were involved in facilitating group activities throughout workshops, designed to maximise the ...

Continued on next page.

participation of attendees.

The DMO was pleased with the feedback and ideas from each of the sectors about aspects of coordination, collaboration, emergency planning and response. Participants expressed that these workshops brought a practical, interactive and stimulating environment to learn about DRM and to strengthen collaboration and mainstreaming for risk reduction across sectors.

Information is now being compiled by Kiwi Consult to assist the development of disaster management strategies for each of Samoa's fourteen sectors. DMO staff assigned to each sector are well placed to continue follow up actions with sector coordinators, following the workshops. *(More photos on page5)*



NZ Civil Defense Minister with DMO's Senior Officer Malia Pisi

The Honorable Minister's visit included a trip to the southern coast of Upolu to observe the tsunami early warning sirens, already installed and made possible by the partnership between DMO and the Government of New Zealand.

During the visit, the New Zealand government announced new funding (SAT\$1.27m) to assist Samoa's preparations for natural disasters. A reception was later held at the New Zealand High Commission during which the commitment was re-stated and DMO is looking forward to closer links with New Zealand development partners.

It is anticipated that this additional aid money will provide the DMO with additional equipment along with training of local police officers and the provision of educational materials for use in schools.

These initiatives will be funded by the NZ's Ministry of Foreign Affairs and Trade and delivered by the Ministry of Civil Defence and Emergency Management. Ongoing partnerships between the New Zealand Government and DMO are expected to further strengthen Samoa's approach to disaster risk management programming and implementation.

Following the visit to the DMO, the Minister was welcomed by the Samoa Red Cross.

New Zealand Civil Defense Minister visits DMO



HE Jackie Frizelle, Filomena Nelson and Hon. Nikki Kaye

DMO's National Emergency Operations Centre hosted a visit by the New Zealand Civil Defence Minister, Honorable Nikki Kaye and the New Zealand High Commissioner HE Jackie Frizelle in August. Assistant CEO Filomena Nelson was able to showcase improvements on our Early Warning System and demonstrate how the new camera technology introduced to NEOC was improving the Centre's monitoring of the Greater Apia area.

CDCRM Facilitators training



Participants of the training

A training was held for the facilitators of the CDCRM program from the 08th - 09th August 2016 as part of the preparations for the pending delivery of the program out into the communities. Participants included members from the FESA, MPoI, SRCS, MWCSD, FLO and DMO (a total of 15 altogether).

The training focused specifically on Modules A & B (Vulnerability and Capacity Assessment) of the CDCRM toolkit. It was also a refresher for some of the participants who were involved in previous CDCRM delivery in communities.



CDCRM Principal officer - Lepale Aussie Simanu with other members during the training

The CDCRM program is expected to be delivered in 112 targeted villages; 100 of the villages will be covered

under the EWACC project while the remaining 12 will be funded by the NZAID and is expected to be completed in four financial years from July 2016.

Further trainings will be held for the remaining Modules C, D & E of the toolkit in the following months.

DMO Samoa joined the Pacific Emergency And Response Logistics (PEARL) Workshop *Melbourne, Australia.*

A four day workshop was held in Melbourne Australia on 26th - 29th July to devise an outline for a humanitarian logistics course in the Pacific. This initiative is known as the P.E.A.R.L project. The P.E.A.R.L project is an output of the First Regional Logistics workshop held in Suva, Fiji early this year where a group of agencies were tasked to develop a Logistics course for the region.

It was the purpose of the workshop to increase the knowledge of logistics practices and inter-operability of humanitarian emergency through a transparent shared network of logisticians and to expand the number of logistics practitioners in the region.

To achieve this goal the following objectives were developed;

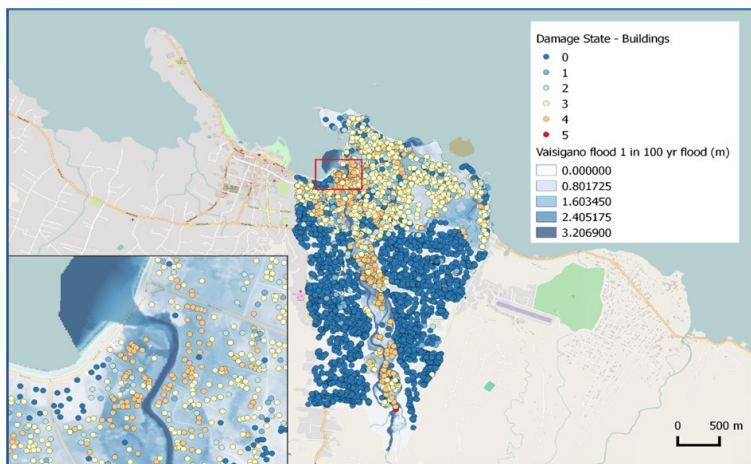
- To reach a consensus on what the course will look like, its content, duration and how it will be accredited and rolled out;
- Create an onward action plan for the course with tasks and outcomes in an agreed framework.

Key core field of logistics the course proposes include procurement, warehousing and inventory Management, Transport, Humanitarian Distribution, Soft skills and Humanitarian principles.

Key agencies involved in the development of this course were Save the Children ... *Continued on next page.*

Oxfam and World Food Programme with assistance from representatives from NDMO Samoa, HK Logistics, Deakin University, Massey University and Centre for Humanitarian Leadership (CHL).

Pacific Risk Tool for Resilience (PARTneR) Project



An example of a product of the RiskScape tool. Projections of potential flooding of Vaisigano River in Apia.

There is an increasing acknowledgement and associated goals by planning and disaster risk management agencies in the Pacific to use risk-based information to support hazard/risk related decision-making within the development context.

Further the availability of the multiple hazards impact and loss modelling tool, RiskScape, which was developed in the Pacific by New Zealand Crown Research Institutes' National Institute of Water and Atmospheric Research (NIWA) and GNS Science, provides an opportunity for Pacific Islands' disaster and planning agencies to help achieve these goals.

To this end and through a New Zealand Aid Partnerships funded project administered by the New Zealand Ministry of Foreign Affairs and Trade, NIWA in partnership with GNS Science, the Geoscience Division of the SPC, the National Disaster Management Offices of Samoa and

Vanuatu are piloting the PARTneR project in Samoa and Vanuatu. PARTneR aims to tailor RiskScape to the Samoa and Vanuatu hazard and risk contexts in order to enable relevant agencies and stakeholders to effectively develop and use risk-based information to support development decision-making (land use and development consent planning).

PARTneR is acknowledged by Samoa and Vanuatu as a very useful tool to help analyse local hazard and asset data in order to output risk-based information useful for planning purposes.

In the past, Disaster Risk Management was often neglected by policy makers and development planners, and key decision-makers were often hesitant to invest in DRR interventions mostly because their benefits were not always immediately realized.

However, with tools such as RiskScape, the need for DRM mainstreaming can be strongly advocated and justified and in doing so, Samoa can become a more disaster resilient society.

The planned three year pilot is earmarked for implementation from July 2016 – June 2019, with subsequent plans to roll out PARTneR to the broader Pacific.



Project Team with Key Stakeholders at the 'PARTneR Design Workshop' in September 12th – 14th 2016.

Disaster Risk Management Sector Workshops in photos



Give us your views about our articles!
Feel free to contact us for more information on
anything you would like to know.
Email: dmosamoa@gmail.com
Or visit us on our Facebook Page:
<https://www.facebook.com/DMOSamoa>
Follow us on Twitter:
[@DMO_Samoa](https://twitter.com/DMO_Samoa)