

OUR ENVIRONMENT OUR HERITAGE



National Test: National Tsunami Early Warning System



WHAT IS THE NATIONAL TSUNAMI EARLY WARNING SYSTEM?

A tsunami early warning system is the means of receiving information from the Pacific Tsunami Warning Centre in Hawaii about a possible tsunami and disseminating this information to the response agencies, media and the general public. For Samoa, the Meteorology Office receives the tsunami bulletins from Hawaii through the Emergency Management Warning Information Network (EMWIN), facsimile, and email. The information provided in the tsunami bulletin is used to calculate the distance of the epicentre of the earthquake from Samoa as well as the direction and to produce our local tsunami bulletin.

This local tsunami bulletin is then issued to all the television and radio stations around the country by delivering them to their locations. The television and radio stations broadcast and telecast this information for the public's information. However this means of alerting the general public is not effective if a tsunami occurs during the early hours of the morning as all television and radio stations will be closed. Hence the use of the Global System for Mobile (GSM) communication network or the mobile telephones to send text messages to pre-selected representatives of villages, media and the response agencies.

The pre-selected text message recipients for the villages include village mayors, church ministers, school principals, owners of hotels, motels and resorts, and "Sui ole Malo". The pre-selected text message recipients for the media and the Disaster Advisory Committee are their key personnel.

Upon receiving the call from the Meteorology Division, Digicel and SamoaTel will immediately send the text messages to the pre-selected representatives in the villages which includes village mayors, church ministers, school principals, hotel/motels/beach resorts representatives as well as the key personnel of the member agencies of the Disaster Advisory Committee and all the members of the National Disaster Council. The following are the standard operating procedures to be followed by everyone for the different level of alerts.

Step 2: Tsunami Watch

- Be prepared and stay away from rivers, bridges and the sea
- Inform everyone of where to go and how to get there

Step 3: Tsunami Warning

- Upon hearing the church/school bells in villages and sirens in the urban area, evacuate immediately to designated evacuation sites, use only designated vehicles, run or walk.

Step 4: Tsunami Warning Cancellation

- Designated people (text message recipients) in the villages and urban areas will inform you that the warning has been cancelled; return home or place of work upon hearing this information.

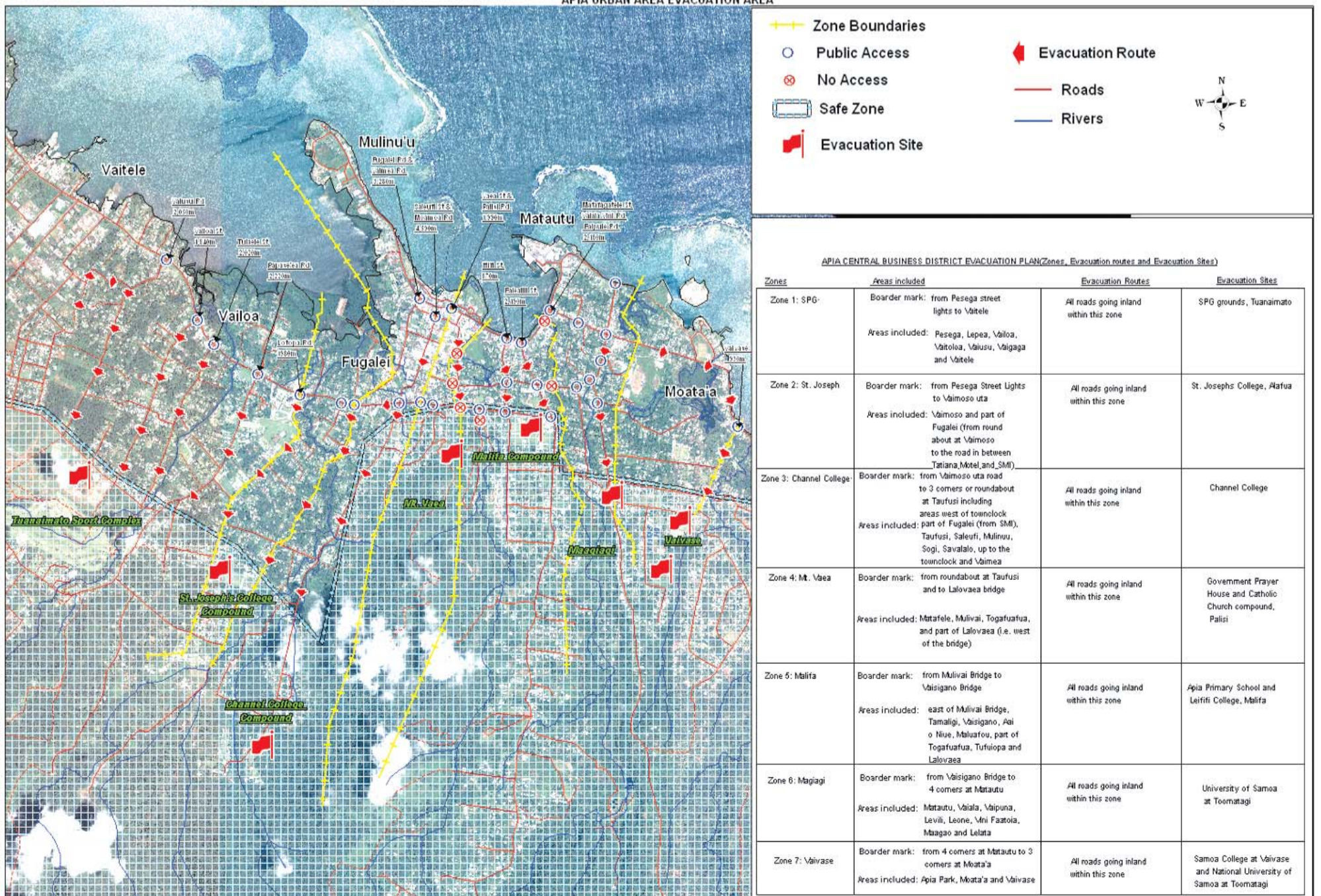
National Standard Operating Procedures for the Tsunami Early Warning System:

Step 1: Tsunami Advisory

- This tsunami advisory is sent to the members of the **Disaster Advisory Committee ONLY** for their information.

(Note: for those in the Apia and Salelologa urban areas as well as those within the vicinity of the Faleolo International Airport, the warning cancellation signal is the deactivation of the sirens).

APIA URBAN AREA EVACUATION AREA



National Mapping Section(MNRE)

OUR ENVIRONMENT OUR HERITAGE

CHILDREN'S CORNER

Children aged 9-15 are invited to answer the following corner. The name of 3 students with top scores at the end of every month will be posted under the "Children's Corner" for special prizes. "2008 Young Environmentalist Star Awards" will be given to 10 students with top total scores at the end of the year.

ADD-IN-VOWELS

Add in vowels to spell out the word

TS_N_M_

_ _RLY

SYST_M

W_RN_NG

PR_C_D_R_S

F_ _R

ST_ND_RD

D_G_C_L

S_M_ _T_L

M_T_ _R_L_GY

N_T_R_L

R_S_ _RC_S

D_S_ST_R

C_ _NC_L

C_MM_TT_ _

V_LL_G_S

C_LL

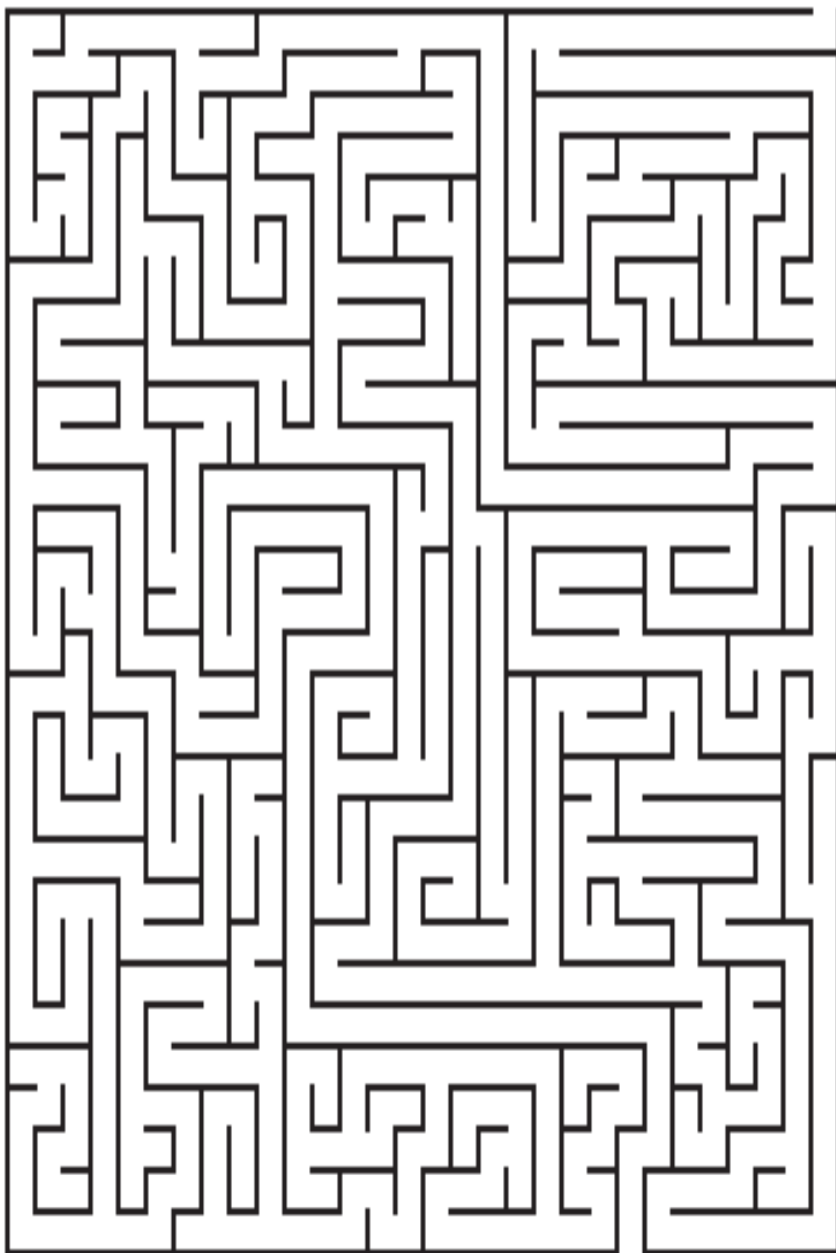
D_V_S_ _N

FILL-IN-THE-GAPS

Upon receiving the call from the _____ Division, _____ and _____ will immediately send the text messages to the pre-selected representatives in the villages which includes _____ mayors, _____ ministers, school principals, hotel/motels/beach resorts representatives as well as the key _____ of the member agencies of the _____ Advisory Committee and _____ the members of the National Disaster Council. The following are the standard operating _____ to be followed by _____ for the different level of alerts.

MAZE

Can you find your way??



THE-FOUR-STEPS

Write the four steps for the National Standard Operating Procedures for the Tsunami Early Warning System

STEP 1:

STEP 2:

STEP 3:

STEP 4:

ACKNOWLEDGEMENTS

We wish to acknowledge and thank the following companies for sponsoring our children's corner prizes

● STRICKLAND BROS

● DIGICEL

Digicel
The Bigger. Better Network.

● McDONALD'S RESTAURANT

● BUSINESS SYSTEM

Produced by the Ministry of Natural Resources and Environment