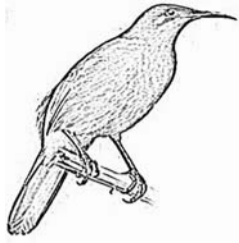
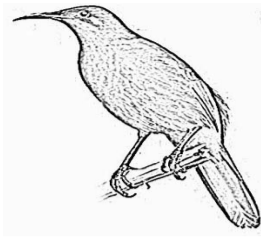


# OUR ENVIRONMENT OUR HERITAGE



## MNRE IMPLEMENTS MYNA BIRD CONTROL PROGRAMS

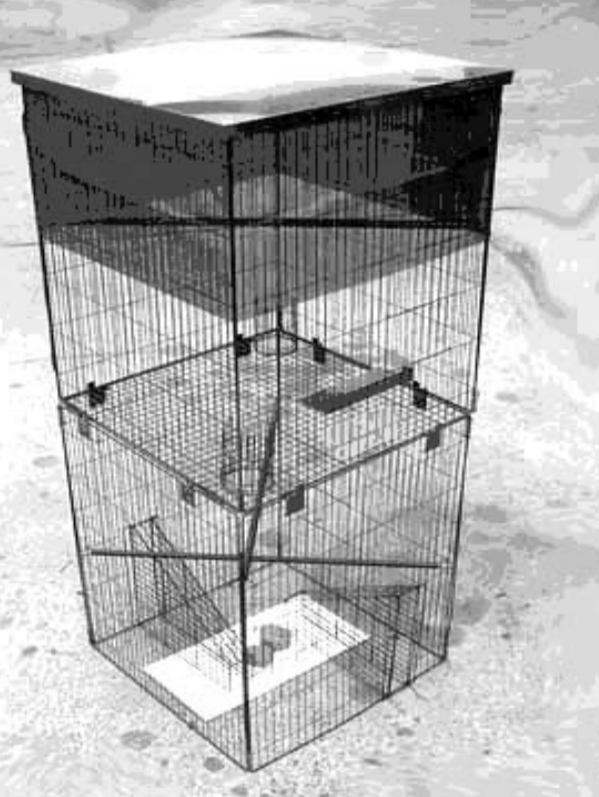


### LET'S KILL THE MYNAS!!!

As seen with intolerance fear to the alarming increase of the voracious myna bird, the Ministry of Natural Resources and Environment (MNRE) is currently coordinating a control program to gradually anticipate problems arising with myna. Generally the purpose of this whole program is to try to manage and control the bird from getting abundant numbers, eventually distributed all over other islands posing more and more problems towards our environment, not to mention the struggle behind our daily livelihoods that's affected bit by bit as we continue to ignore them. This time, the Division of Environment and Conservation (DEC) direct its focus on ways to control it.

The Division of Environment and Conservation under Ministry of Natural Resources and Environment is confident with the proposed mission after approval of funding by the cabinet to empower progress of this task in the country. This endowment will be used to compensate multi-purpose equipments necessitate, transport facilities and awareness programs materials needed for this program.

### MYNA TRAP



The 4 Day Myna Trap was trialed by technical staff of Division of Environment and Conservation in 2006 in account of this important work making sure they have intellectual skills using the trap. This mechanism is projected to give three day free feeding routine and a one day catch. It is very complicated working with the myna mainly because they are so intelligent and clever. They can learn quickly to avoid danger through their own experience and by watching and listening to others of their kind.

### BONUS SCHEME

This scheme will allow local people to assist in this control program of the myna birds. Such support is given by bringing in dead mynas by the locals and the Ministry will provide a bonus or monetary term of 20cent per dead myna. This system has been encourage to pose immediate actions to control myna numbers. However, this system will include danger as people may have concern on killing myna and ignoring the effect on other human lives. Thus, the Ministry has encourage the public who will be interested to assist in this method to make sure that you use legalise method to kill myna birds for the safety of all.

### COMMUNITY ASSISTANCE

It is with much appreciation that the Ministry of Natural Resources and Environment asking the people of Samoa to put in all your full support in assisting the Ministry to conquer every bit of action needed in eliminating this prevailing, complicated myna bird. This benefits the country as a whole in terms of economic development success in various aspects today and the years to come.

### INTELLIGENT MYNA BIRD

There are two species of myna bird found in Samoa. These species are Jungle myna (*Acridotheres fuscus*) and Common myna (*Acridotheres tristis*). *A. fuscus* was introduced in 1965 by the Ministry of Agriculture followed by *A. tristis* in 1988 for the same purpose unfortunately both species turned out to have adverse impacts on our native biodiversity. Common mynas are able to establish themselves in almost any habitat and, as a result, have become an invasive specie in some areas outside of their native range. They are considered a pest because they eat fruit from agricultural crops such as ripe bananas and pawpaws. They are also seen as a nuisance for their noise and droppings in the vicinity of human habitation.

#### 2 MYNA SPECIES IN SAMOA



■ JUNGLE MYNA



■ COMMON MYNA

### PHYSICAL DESCRIPTION

Body length ranges from 22 to 26 cm, weigh anywhere from 82 to 143 grams, and have a wingspan of 120 to 142 mm. Common myna are dark brown with a black head. They have white undertail coverts, tail tips, patches at the base of their primaries, and wing linings that are distinctive in flight. Juveniles have more brownish heads than adults. *Acridotheres fuscus* is a grey-brownish myna with a short crest, black head, greyish-brown upperparts, dark ashy-grey chin, breast and belly, buffish-white lower belly and undertail coverts, white bases to primaries, forming a white wing patch, a white-tipped tail, orange bill, with a blue base and yellow legs and feet (Feare & Craig 1998). The only distinct features that differentiate jungle from common are those jungle mynas don't have yellow skin around the eye point, slimmer and darker than common myna.

### HABITAT

*Acridotheres fuscus* are birds of lowlands and foothills, although they can occur over 2000 m. They inhabit well-wooded deciduous areas with open spaces, especially near cultivation, villages and coastal plains. Common mynas occupy a wide range of habitats in warm areas with access to water. In their native range, common mynas inhabit open agricultural areas such as farmlands as well as cities. They are often found on the outskirts of towns and also utlying homesteads in forest. They tend to avoid dense vegetation. They are most common in dry woodlands and partly open forests. Common mynas prefer to roost in isolated stands of tall trees with dense canopies.

### DIET

Mynas are omnivorous. They prey on eggs and young of other birds, such as akepas (*Loxops coccineus*). They sometimes even wade in shallow waters to catch fish. Common mynas feed mostly on the ground. In residential areas they eat anything from garbage to kitchen scraps. Common mynas eat small mammals, such as mice, as well as lizards and small snakes. They also eat spiders, earthworms, and crabs. Common mynas eat mostly grains and fruit, but also feed on flower nectar and petals.

### CLASSIFICATION

- Kindom: Animalia
- Phylum: Chordata
- Subphylum: Vertebrata
- Class: Aves
- Order: Passeriformes
- Family: Sturnidae
- Genus: *Acridotheres*
- Species: *Acridotheres fuscus*

### GEOGRAPHIC RANGE

Native range: India, South-east Asia.  
Known introduced range: Fiji, Tonga, and Samoa. *A. fuscus* are established in many Pacific Islands.

### GENERAL IMPACTS

Perceived as a problem to growers of commercial crops and contributes greatly on the destruction of other habitats especially that of native species. Love to nest in the roofs and eaves of houses. Nests are infested with mite who disperses from nests once young fledge. If they are inhaled they can cause asthma and hay fever in humans.

For more information contact our:

- Environment and Conservation Division
- DBS building
- Floor 5
- Phone #: 23800 / 22481

**Produced by the Ministry of Natural Resources and Environment**